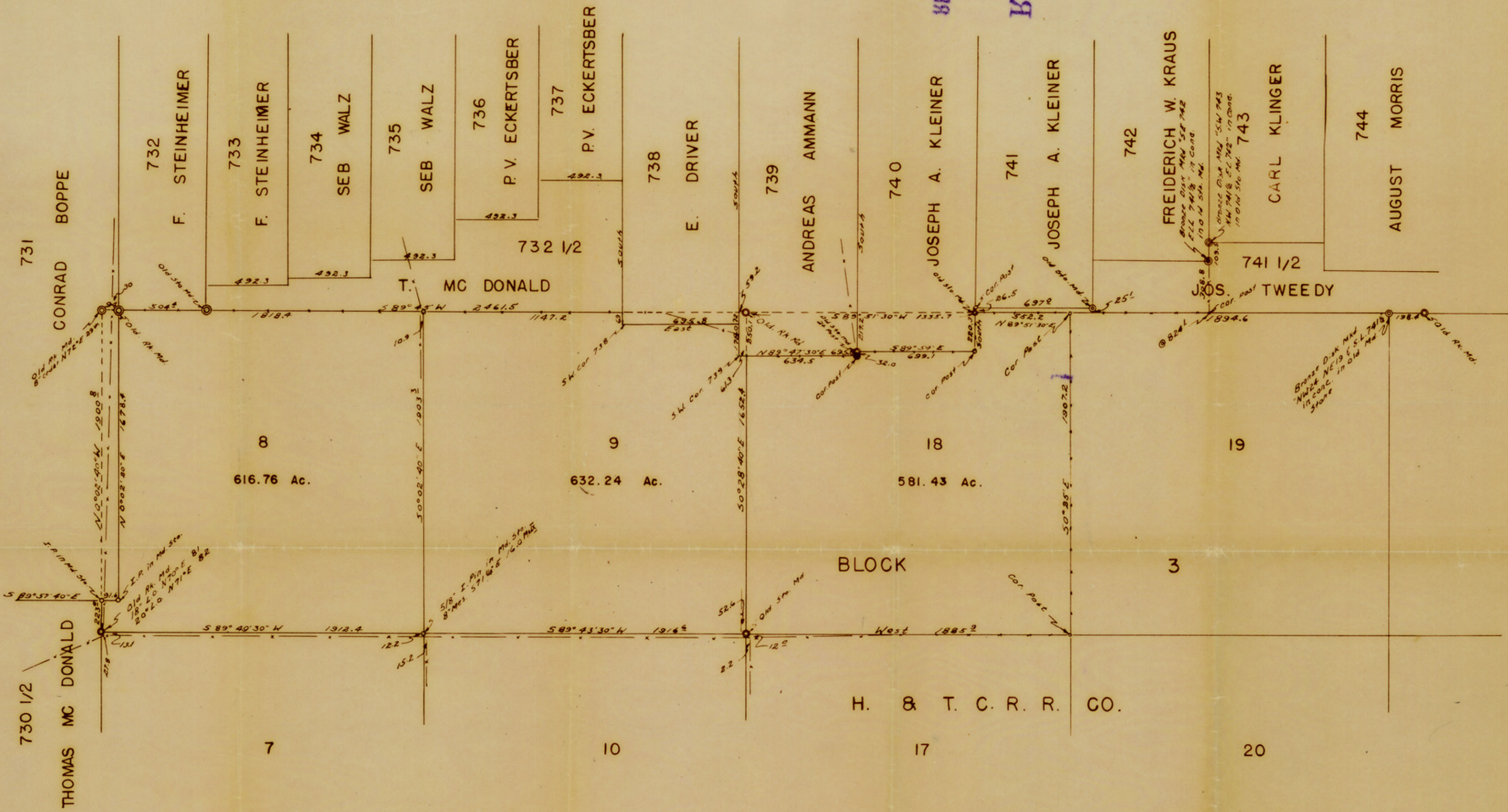


RECEIVED TO HWL
JAN 10 1925
RECEIVED



Scale: 1" = 500 Yds.
© Re-survey Corners Found

A MAP SHOWING A PART OF D. E. HUGHES ESTATE RANCH AND
ADJOINING LAND IN IRON COUNTY, TEXAS.

SURVEYED BY ME ON THE GROUND IN NOVEMBER 1951.

J. A. Simpson
COUNTY SURVEYOR TOM GREEN COUNTY, TEXAS.
AND LICENSED STATE LAND SURVEYOR.

J.A. Simpson
 COUNTY SURVEYOR
 BLOCK 3 - 18 18 25
 PART OF RIVER FRONT 2142
 AT THE INTERSECTION OF
 BLOCK 3 - 18 18 25
 PART OF H. & T. C. R. R. CO.
 COUNTY
 12