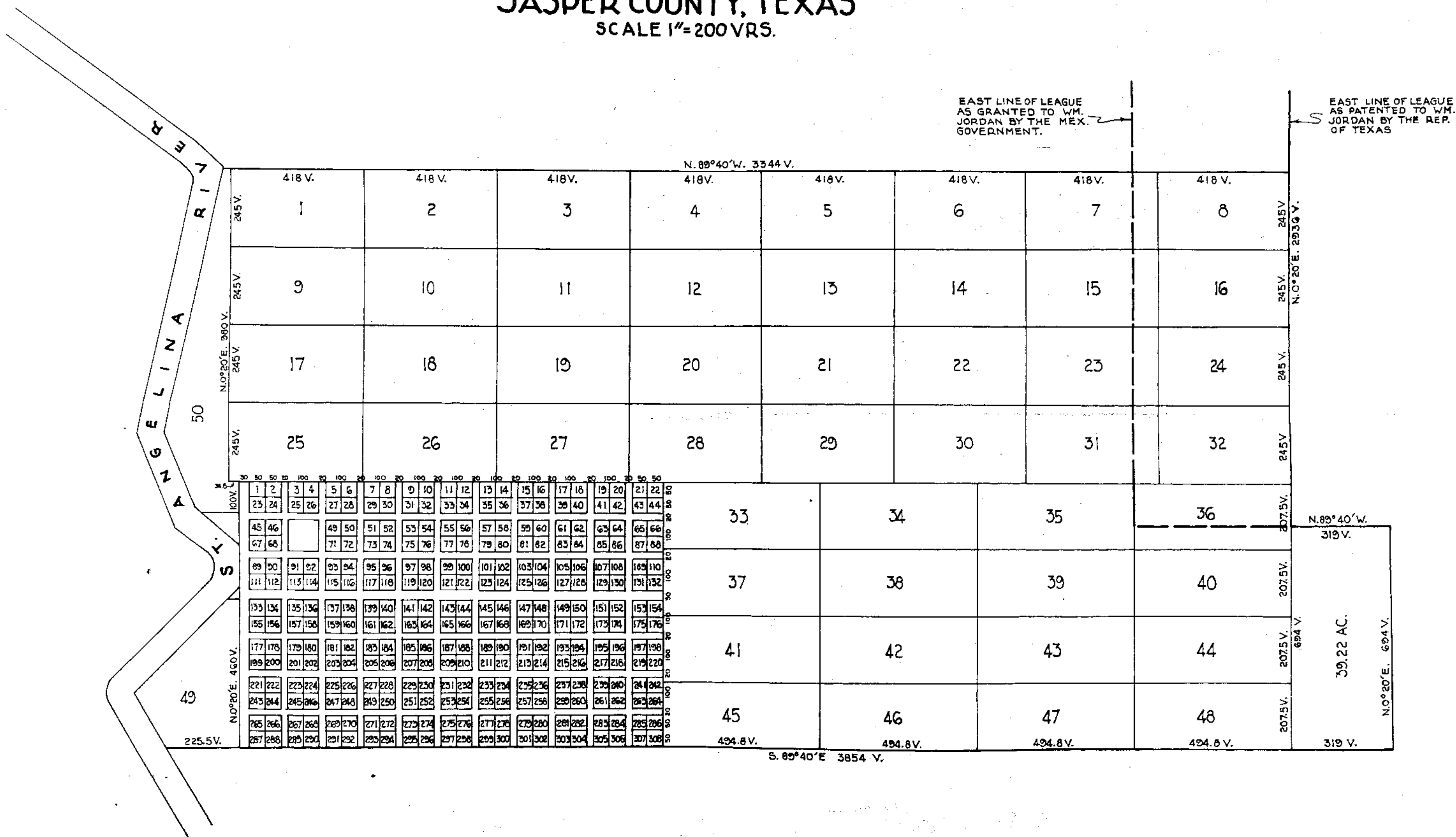


BEVILPORT

TAKEN FROM SOUTH 1/2 OF LEAGUE PATENTED
TO WM. JORDAN BY THE REPUBLIC OF TEXAS
JASPER COUNTY, TEXAS
SCALE 1"=200 VRS.



NOTE: THIS IS THE 1835 REVISED MAP OF THE TOWN OF BEVILPORT, THE ORIGINAL OF 1832 HAVING BEEN ESTABLISHED ON THE LINES OF THE 1/2 LEAGUE AS GRANTED TO WILLIAM JORDAN BY THE MEXICAN GOVERNMENT.

GUY A. STONECIPHER 3/3/50
CIVIL ENGINEER