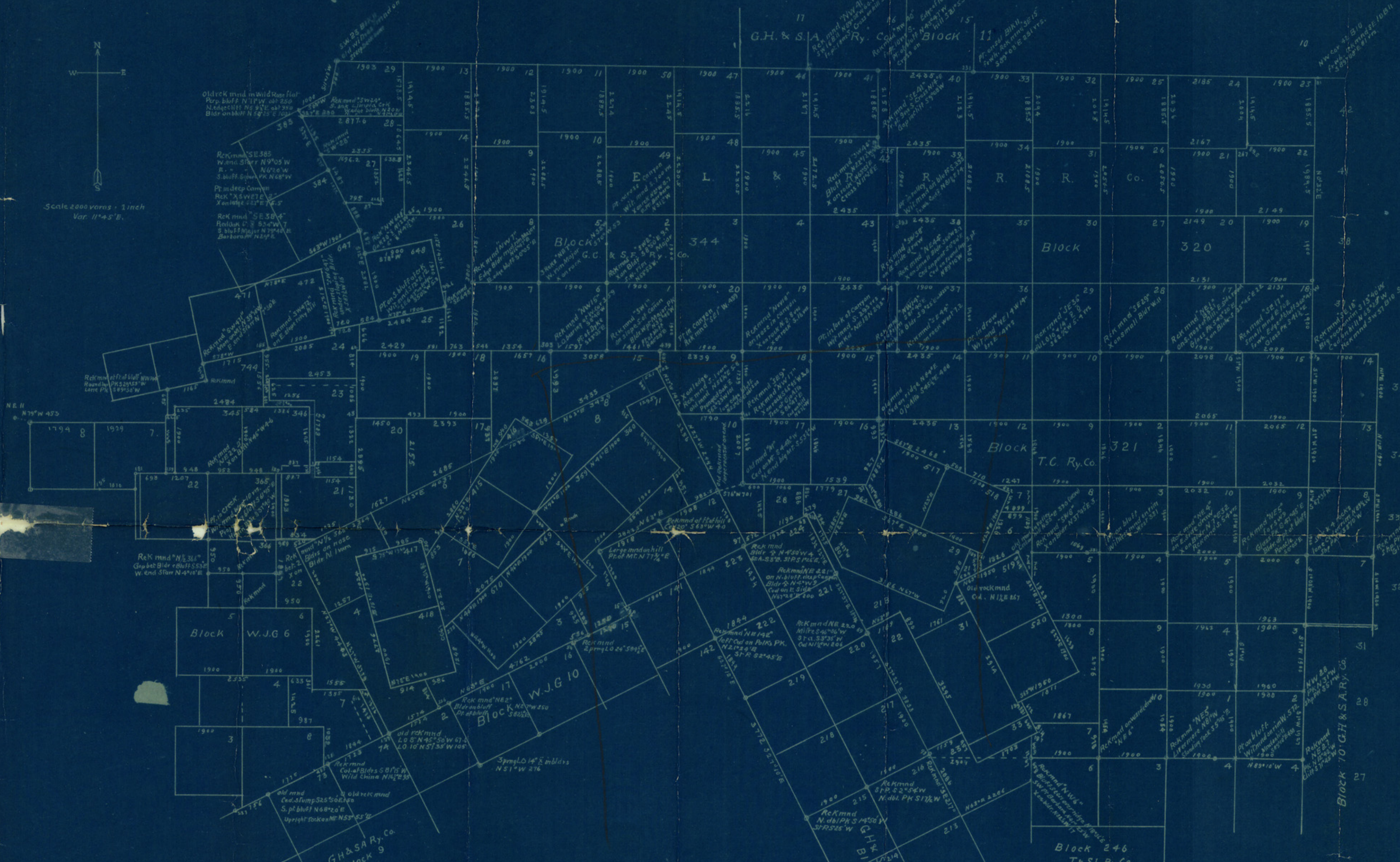


Scale 2000 yards = 1 inch  
Var. 11° 45' E.



### PLAT

of a Resurvey of  
Block 320 E.L. & R.R.R.R. Co.  
Block 321 Texas Central Ry. Co.  
Block 344 G.C. & S.F. Ry. Co.  
and Certain Sections in  
Block W.J.G. 10, D. & P. Ry. Co.,  
& Block W.J.G. 6, G.C. & S.F. Ry. Co.  
in Brewster and Jeff Davis Counties, Texas,  
Made under the Instructions of the General Land Office,  
Based on the Original Field Notes of the Surveys in question,  
A preliminary Survey locating the Original Marked Corners,  
Actual connection on the ground between points called for  
by the Original Field Notes of these Surveys.  
Made from actual Survey on the ground July 1923, by  
R.S. Dod,  
Licensed Land Surveyor  
of Texas.

*I, R.S. Dod, Licensed Land Surveyor, do hereby certify that the foregoing plat is true & correct, and that all lines & corner courses & distances are shown as found on the ground by actual survey made by me on July 1923.*

Alpine Tex. Aug 25<sup>th</sup> 1923

*R.S. Dod  
Licensed Land Surveyor*

Recorded Vol. 1, Surveyor records Jeff Davis Co. Tex.  
R.S. Dod