

BARC RANCH

H. D. CORNELL
KENT, TEXAS

SCALE: 1 IN. = 1000 YRS.

1947 PASTURES

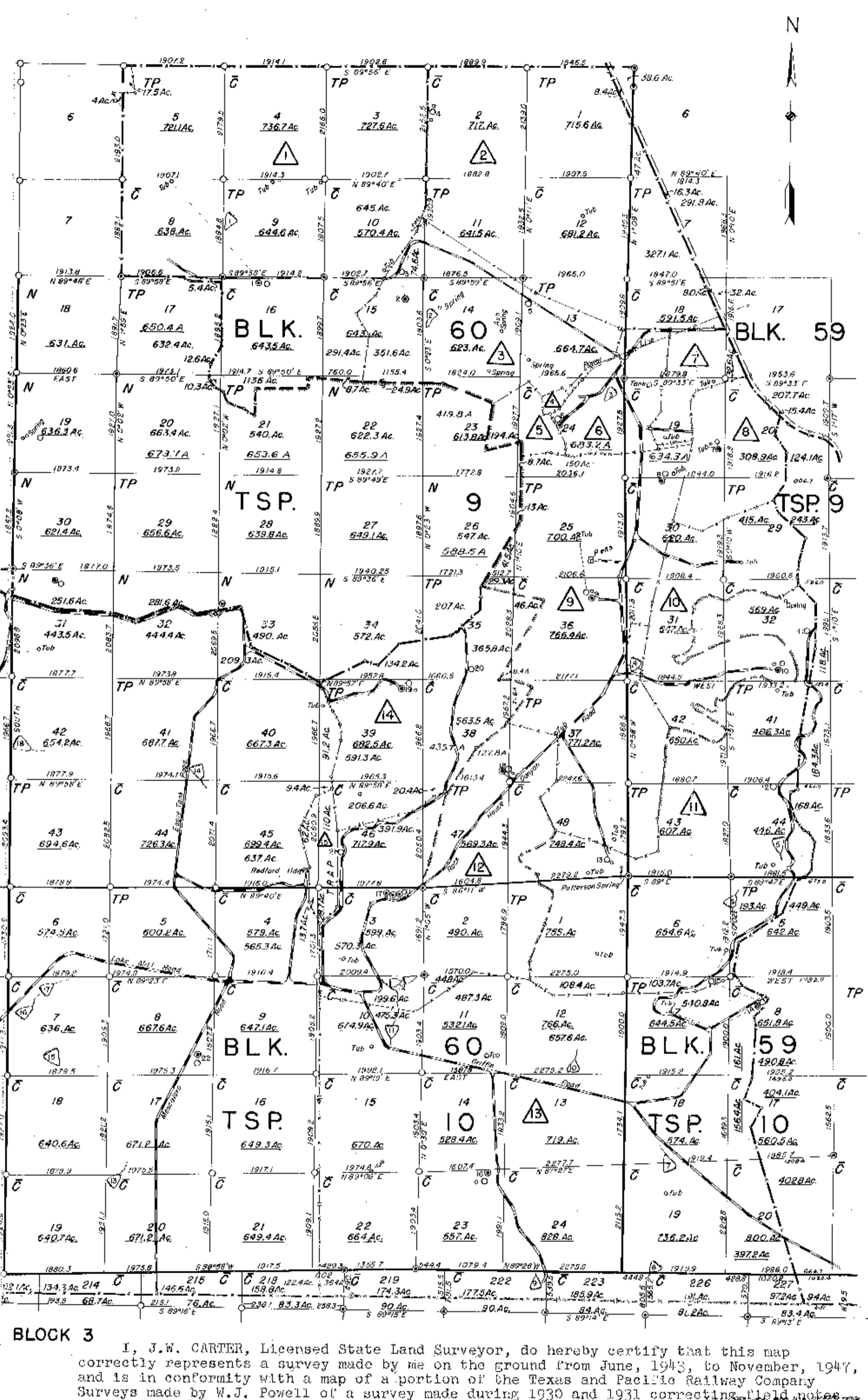
ACRES	ACRES
1. Duroc	11. Observatory
2. Holding	12. Upper Rock House
3. New Well	13. Giffin
4. Game Trap	14. Redford House Pasture
5. Rough Trap	15. Redford Trap
6. H2O	
7. Meadow	
8. Horse	
9. Lower Rock House	
10. Cattle	

WELLS & RESVRS.

DEPTH	ELEV	SEC	BLK	TSP	DEPTH	ELEV	SEC	BLK	TSP
1. Quince	111	15	60	9	15. Observatory Reser.	523	24	7	10
2. New Well	111	15	60	9	16. Giffin	523	24	7	10
3. New Well	111	15	60	9	17. Upper Rock House (S. 2. 60')	523	24	7	10
4. Spring House	111	15	60	9	18. Giffin	523	24	7	10
5. Spring House	111	15	60	9	19. Redford House Pasture	523	24	7	10
6. Spring House	111	15	60	9	20. West Side Reser.	523	24	7	10
7. Spring House	111	15	60	9	21. Redford House Reser.	523	24	7	10
8. Spring House	111	15	60	9	22. Maxellera	523	24	7	10
9. Spring House	111	15	60	9	23. Giffin	523	24	7	10
10. Spring House	111	15	60	9	24. Giffin	523	24	7	10
11. Spring House	111	15	60	9	25. Giffin	523	24	7	10
12. Spring House	111	15	60	9	26. Giffin	523	24	7	10
13. Spring House	111	15	60	9	27. Giffin	523	24	7	10
14. Spring House	111	15	60	9	28. Giffin	523	24	7	10
15. Spring House	111	15	60	9	29. Giffin	523	24	7	10
16. Spring House	111	15	60	9	30. Giffin	523	24	7	10
17. Spring House	111	15	60	9	31. Giffin	523	24	7	10
18. Spring House	111	15	60	9	32. Giffin	523	24	7	10
19. Spring House	111	15	60	9	33. Giffin	523	24	7	10
20. Spring House	111	15	60	9	34. Giffin	523	24	7	10
21. Spring House	111	15	60	9	35. Giffin	523	24	7	10
22. Spring House	111	15	60	9	36. Giffin	523	24	7	10
23. Spring House	111	15	60	9	37. Giffin	523	24	7	10
24. Spring House	111	15	60	9	38. Giffin	523	24	7	10
25. Spring House	111	15	60	9	39. Giffin	523	24	7	10
26. Spring House	111	15	60	9	40. Giffin	523	24	7	10
27. Spring House	111	15	60	9	41. Giffin	523	24	7	10
28. Spring House	111	15	60	9	42. Giffin	523	24	7	10
29. Spring House	111	15	60	9	43. Giffin	523	24	7	10
30. Spring House	111	15	60	9	44. Giffin	523	24	7	10
31. Spring House	111	15	60	9	45. Giffin	523	24	7	10
32. Spring House	111	15	60	9	46. Giffin	523	24	7	10
33. Spring House	111	15	60	9	47. Giffin	523	24	7	10
34. Spring House	111	15	60	9	48. Giffin	523	24	7	10
35. Spring House	111	15	60	9	49. Giffin	523	24	7	10
36. Spring House	111	15	60	9	50. Giffin	523	24	7	10

TANKS

SEC	BLK	TSP	SEC	BLK	TSP
1. Giffin	60	9	10. Mead	60	9
2. Giffin	60	9	11. Giffin	60	9
3. Giffin	60	9	12. Giffin	60	9
4. Giffin	60	9	13. Giffin	60	9
5. Giffin	60	9	14. Giffin	60	9
6. Giffin	60	9	15. Giffin	60	9
7. Giffin	60	9	16. Giffin	60	9
8. Giffin	60	9	17. Giffin	60	9
9. Giffin	60	9	18. Giffin	60	9
10. Giffin	60	9	19. Giffin	60	9
11. Giffin	60	9	20. Giffin	60	9
12. Giffin	60	9	21. Giffin	60	9
13. Giffin	60	9	22. Giffin	60	9
14. Giffin	60	9	23. Giffin	60	9
15. Giffin	60	9	24. Giffin	60	9
16. Giffin	60	9	25. Giffin	60	9
17. Giffin	60	9	26. Giffin	60	9
18. Giffin	60	9	27. Giffin	60	9
19. Giffin	60	9	28. Giffin	60	9
20. Giffin	60	9	29. Giffin	60	9
21. Giffin	60	9	30. Giffin	60	9
22. Giffin	60	9	31. Giffin	60	9
23. Giffin	60	9	32. Giffin	60	9
24. Giffin	60	9	33. Giffin	60	9
25. Giffin	60	9	34. Giffin	60	9
26. Giffin	60	9	35. Giffin	60	9
27. Giffin	60	9	36. Giffin	60	9
28. Giffin	60	9	37. Giffin	60	9
29. Giffin	60	9	38. Giffin	60	9
30. Giffin	60	9	39. Giffin	60	9
31. Giffin	60	9	40. Giffin	60	9
32. Giffin	60	9	41. Giffin	60	9
33. Giffin	60	9	42. Giffin	60	9
34. Giffin	60	9	43. Giffin	60	9
35. Giffin	60	9	44. Giffin	60	9
36. Giffin	60	9	45. Giffin	60	9
37. Giffin	60	9	46. Giffin	60	9
38. Giffin	60	9	47. Giffin	60	9
39. Giffin	60	9	48. Giffin	60	9
40. Giffin	60	9	49. Giffin	60	9
41. Giffin	60	9	50. Giffin	60	9



I, J.W. CARTER, Licensed State Land Surveyor, do hereby certify that this map correctly represents a survey made by me on the ground from June, 1943, to November, 1947, and is in conformity with a map of a portion of the Texas and Pacific Railway Company Surveys made by W.J. Powell of a survey made during 1930 and 1931 correcting field notes and showing location of Kuechler corners, McCombs corners, and accepted received. This the 20th day of October, 1950.

J.W. Carter
Licensed State Land Surveyor

REFERRED TO MAP

SWITCH FILE No. 35
COUNTY JEFF DAVIS