

Milford

Lucinda Dyches League

Stephen Jackson Sour Lake League

Henry Stephenson League

Walker Pettit League

Wilson Dyches

Joseph Dyches

Shadrac Norris

These field notes put Pine Island Bogous here represent

Mary Jones (320) BRR

BRR Section

BRR Section

BRR Section

BRR Section

Thomas Gorum

David Choat League

Benny Kemo League

Abraham Rowson League

Jose del Rio League no field notes here

Pine Island Bogous

A. Kuff or R. Kuff

R. Kuff or R. Gade

Marina Horton League

Sophia Dean League

James Serviss Jr League

Robert Harney League

William Mann McKinney or J. J. Mitchell

A. B. Serviss 1280 Acres

John Vannoy 1/2 League

Alexander Horton 1/2 League

M. J. Lazarine League

James Serviss Sr League

John Blair League

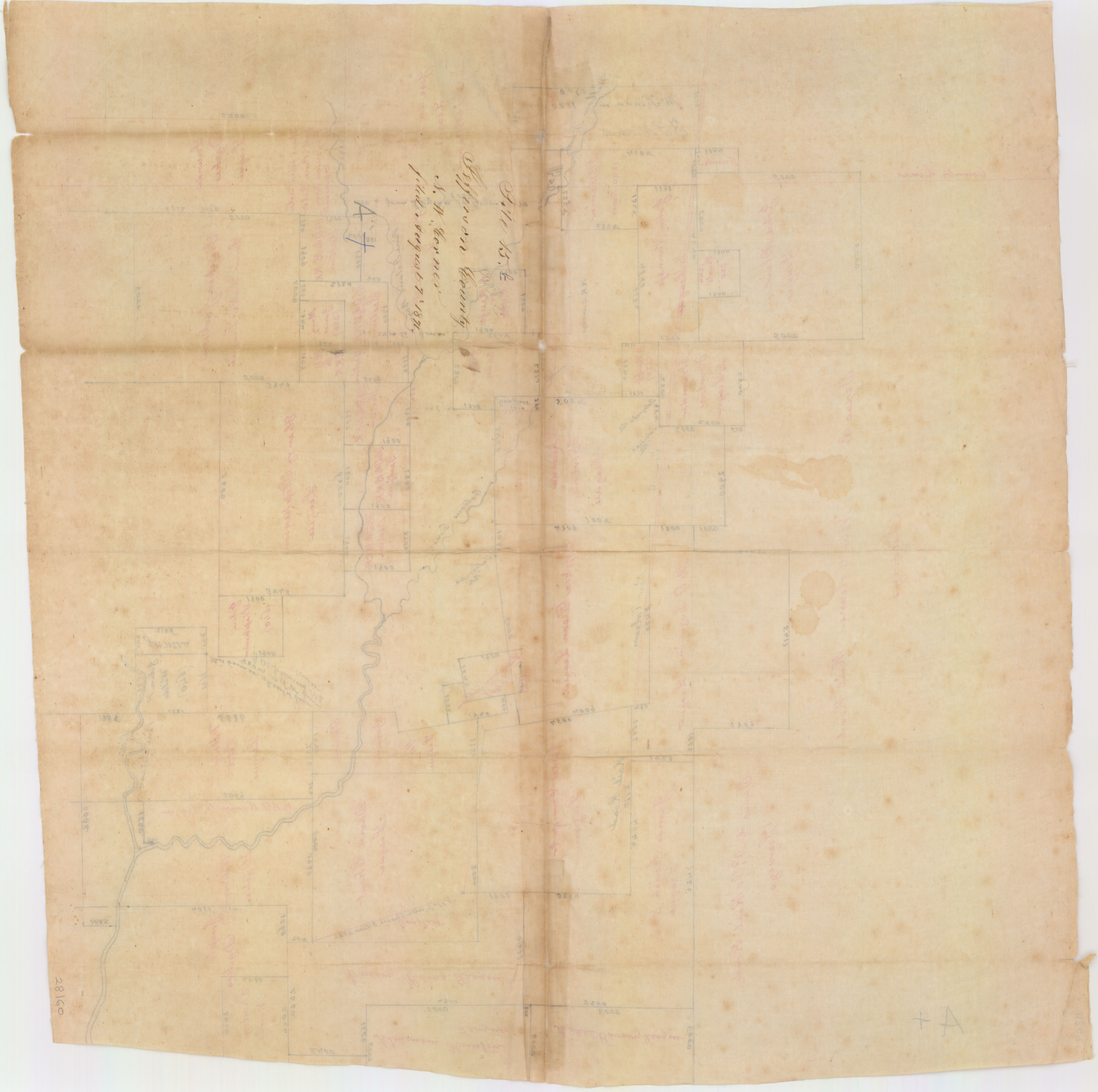
Texas & New Orleans Rail Road Surveys

New Orleans Rail Road Surveys

Texas & N.O. Rail Road Surveys

County Line

A+

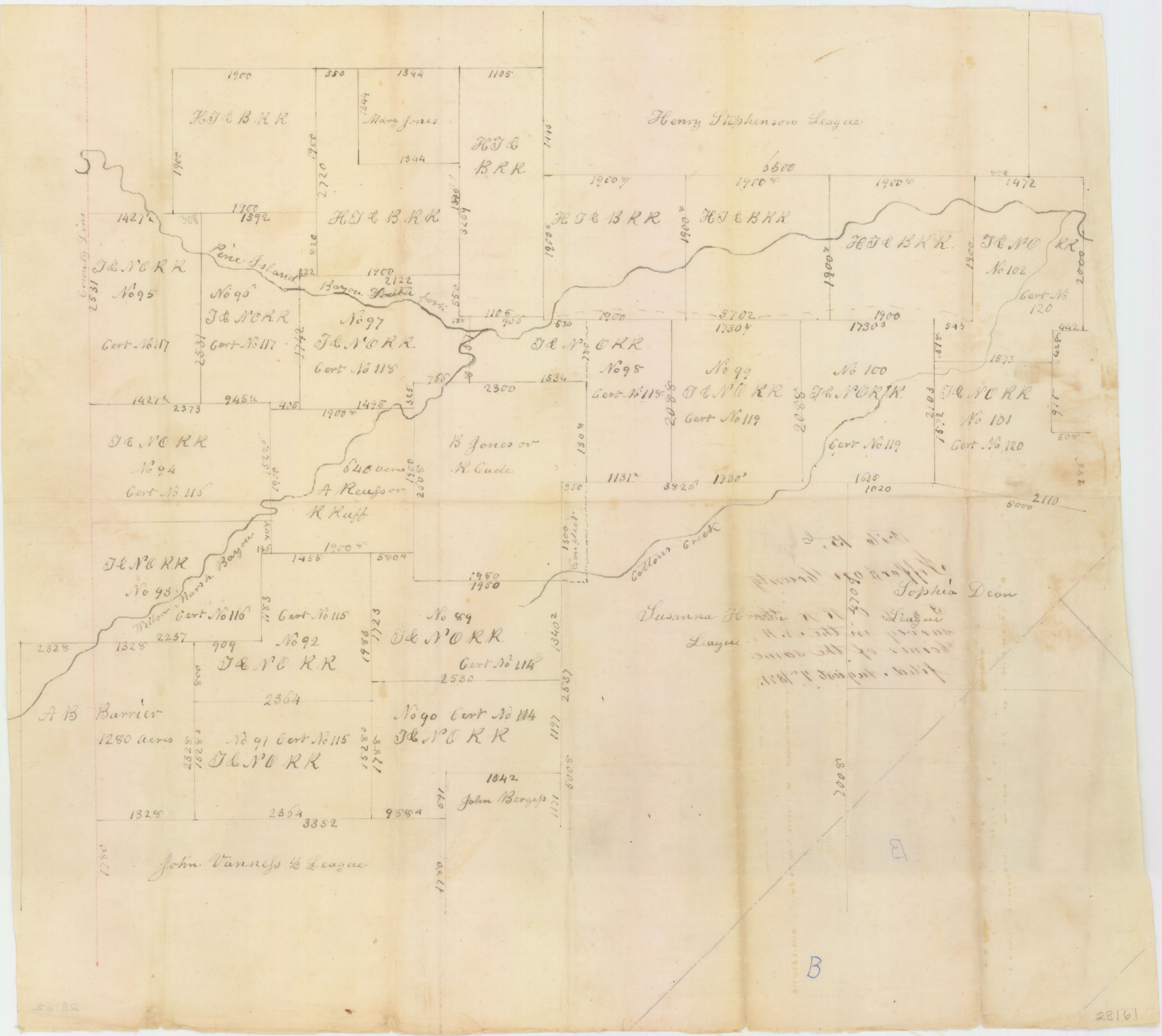


Jefferson County
Missouri
July 15, 1878
J. W. Barnes
plat August 7, 1877

A

A

28160



Green Bay Line
2531

1900

1427⁵

2325

1325

1750

1900

1700

1427⁵

1325

1325

1750

350

1700

945⁵

909

2864

1750

1844

1700

1427⁵

909

2864

1750

1105

1700

1427⁵

909

2864

1750

1844

1700

1427⁵

909

2864

1750

1105

1700

1427⁵

909

2864

1750

1844

1700

1427⁵

909

2864

1750

1105

1700

1427⁵

909

2864

1750

1844

1700

1427⁵

909

2864

1750

1105

1700

1427⁵

909

2864

1750

1844

1700

1427⁵

909

2864

1750

1105

1700

1427⁵

909

2864

1750

1844

1700

1427⁵

909

2864

1750

1105

1700

1427⁵

909

2864

1750

1844

1700

1427⁵

909

2864

1750

1105

1700

1427⁵

909

2864

1750

1844

1700

1427⁵

909

2864

1750

1105

1700

1427⁵

909

2864

1750

1844

1700

1427⁵

909

2864

1750

1105

1700

1427⁵

909

2864

1750

1844

1700

1427⁵

909

2864

1750

1105

1700

1427⁵

909

2864

1750

1844

1700

1427⁵

909

2864

1750

1105

1700

1427⁵

909

2864

1750

1844

1700

1427⁵

909

2864

1750

1105

1700

1427⁵

909

2864

1750

1844

1700

1427⁵

909

2864

1750

1105

1700

1427⁵

909

2864

1750

1844

1700

1427⁵

909

2864

1750

1105

1700

1427⁵

909

2864

1750

Beaumont July 13th 1871,

To Jacob Kreuchler Com^r

General Land Office

Dr Sir

Herewith I send several sets of corrected field notes & a Sketch representing the N^W part of Jefferson County and their connections with Hardin County Surveys, I commence this work at the S^E Corner of Charles Williams League from which an Overcup Oak 30 inch diam brs N⁷³¹/₂W & a Scrub Oak 1 foot diam brs N¹⁸¹/₂W - 31 was dist. Thence West at 5000 was to an old mound 13 was west of a natural mound same course 10,000 was to the S^W Corner of A Savary & S^E Corner of Jas Gerish Sen but could find no mound & made one, at 17426 was the S^W Corner of Jas Gerish & one of the Lazarine Corners old mound in low wet prairie marsh & at 18460 was a Corner of Lazarine League same course at 27,463 was, Thence North 961 was, at this point I placed an old Telegraph pole with a flag for A Hortons N^E Corner, Thence West 958 was where placed another telegraph pole with flag for S Hortons West line, Then I proceeded to Pine Island Bayou where the McKinney or Kumayor League line crosses the same then chained down his West line from the Bayou 4500 was to his S^W Corner in the prairie this is also one of Sophia Deans Corners here I also erected another telegraph pole with flag, Thence West at 1020 was made mound for N^W Corner of Dean & N^E Corner of S Horton Thence West on S Hortons North line 3826 was part of this line is in the Timber of young growth mostly

File 15 b

Jefferson County.

Explanation of surveys
of the N. W. Corner
thereof
filed August 7th 1871.

\$1.00 (P)

X
X
F

counter 88162

XX

at this corner I made mound. Thence I chained South 5008 was my pole & flag bears East B was dist I then Chained from the NE Corner of B Jones or Cades survey South 1308 was to S Hortons North line then West 350 was to her NW Corner. I then chained from Cades NE Corner North & found it to be 780 was to a line running East & West I run this line West & at 450 was to Pine Island Bayou & at 530 was the Corner of a Survey made in Hardin County. I continued to trace & remark the South lines of these surveys to their beginning & from the last line or Corner I run West 1107 was to the County Line I retraced & remarked this line to the North line of Barrier thus I find the vacancy existing in this section of the County. According to the old surveys made for Lucinda Dyches her survey runs South from Jacksons South line 2680 was & Vilereal runs South 2800 was less 351 was to B Jones NW Corner this would leave the vacancy between B Jones & the Hardin County survey 1782 was & I only find 780 was. The only mark on the Vilereal field notes that fits is the Bayou on the West line he calls it Pine Island Bayou, on this sketch it is Willow marsh Bayou. On the East end of this vacancy the only connection is in John Stephenson 640 acre Survey & John Pier Wilds survey this is described on the plat

George Armstrong surveyor
Jefferson County