

PORT CITY OF ARTHUR

L A K E

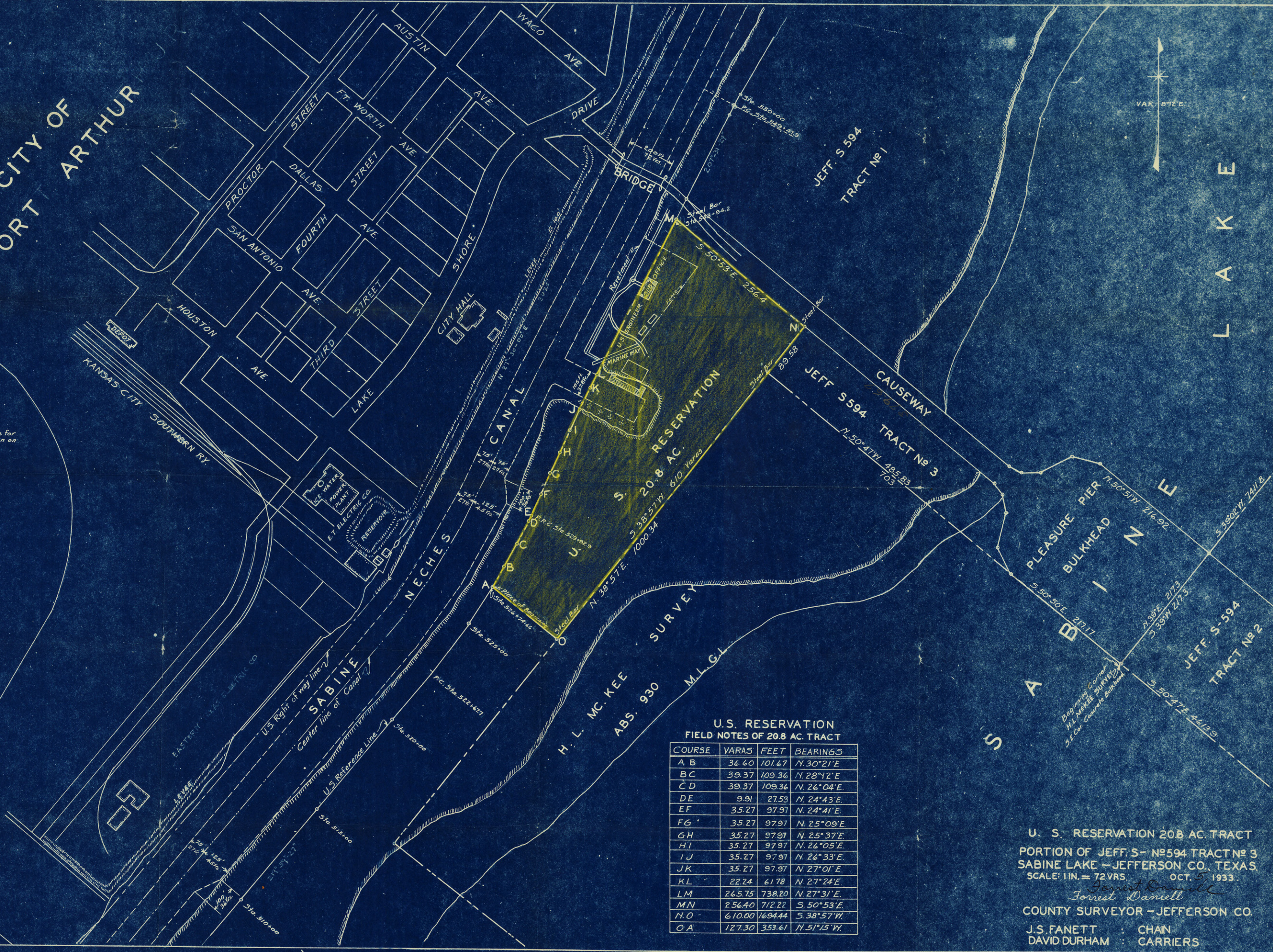
VAR. 87'E

\*Note\*  
I am indebted to U.S. Engineers Office for Sabine - Neches Canal information shown on this Map.

B.B.B. & C.R.R. CO. SURVEY

I. BRAY SURVEY

CITY LIMITS 1911



U.S. RESERVATION  
FIELD NOTES OF 20.8 AC. TRACT

COURSE	VARAS	FEET	BEARINGS
A B	36.60	101.67	N. 30° 21' E
B C	39.37	109.36	N. 28° 12' E
C D	39.37	109.36	N. 26° 04' E
D E	9.91	27.53	N. 24° 43' E
E F	35.27	97.91	N. 24° 41' E
F G	35.27	97.91	N. 25° 09' E
G H	35.27	97.91	N. 25° 37' E
H I	35.27	97.91	N. 24° 05' E
I J	35.27	97.91	N. 24° 33' E
J K	35.27	97.91	N. 27° 01' E
K L	22.24	61.78	N. 27° 24' E
L M	245.75	738.20	N. 27° 31' E
M N	256.40	712.22	S. 50° 53' E
N O	610.00	1694.44	S. 38° 57' W
O A	127.30	353.61	N. 51° 15' W

U. S. RESERVATION 20.8 AC. TRACT  
PORTION OF JEFF. S- 9594 TRACT No 3  
SABINE LAKE - JEFFERSON CO., TEXAS  
SCALE: 1 IN. = 72 VRS. OCT. 5, 1933.  
*Forrest Daniell*  
COUNTY SURVEYOR - JEFFERSON CO.

J.S. FANETT : CHAN  
DAVID DURHAM : CARRIERS