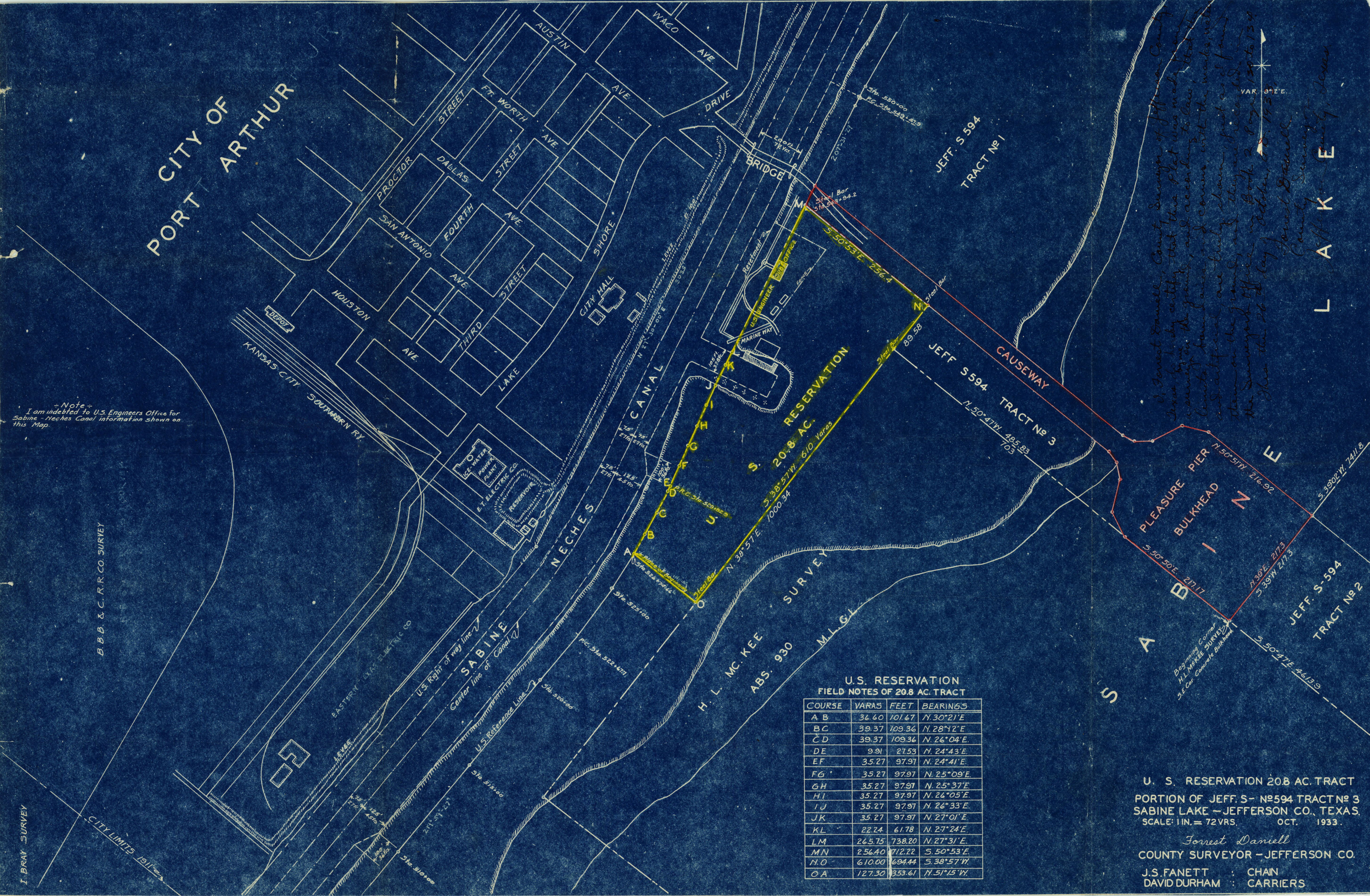


PORT CITY OF ARTHUR

Note
I am indebted to U.S. Engineers Office for Sabine - Neches Canal information shown on this Map.

B.B.B. & C.R.R. CO. SURVEY

I. BRAY SURVEY



U.S. RESERVATION
FIELD NOTES OF 20.8 AC. TRACT

| COURSE | VARAS | FEET | BEARINGS |
|--------|--------|---------|--------------|
| A B | 36.60 | 101.67 | N. 30° 21' E |
| B C | 39.37 | 109.36 | N. 28° 42' E |
| C D | 39.37 | 109.36 | N. 26° 04' E |
| D E | 9.91 | 27.53 | N. 24° 43' E |
| E F | 35.27 | 97.97 | N. 24° 41' E |
| F G | 35.27 | 97.97 | N. 25° 09' E |
| G H | 35.27 | 97.97 | N. 25° 37' E |
| H I | 35.27 | 97.97 | N. 26° 05' E |
| I J | 35.27 | 97.97 | N. 26° 33' E |
| J K | 35.27 | 97.97 | N. 27° 01' E |
| K L | 22.24 | 61.78 | N. 27° 24' E |
| L M | 265.75 | 738.20 | N. 27° 31' E |
| M N | 256.40 | 712.22 | S. 50° 53' E |
| N O | 610.00 | 1694.44 | S. 38° 57' W |
| O A | 127.30 | 353.61 | N. 51° 15' W |

U. S. RESERVATION 20.8 AC. TRACT
PORTION OF JEFF. S- 594 TRACT No 3
SABINE LAKE - JEFFERSON CO., TEXAS.
SCALE: 1 IN. = 72 VRS. OCT. 1933.

Forrest Daniell
COUNTY SURVEYOR - JEFFERSON CO.
J.S. FANETT : CHAIN
DAVID DURHAM : CARRIERS

I, Forrest Daniell, County Surveyor of Jefferson County, Texas, do hereby certify that this plot was made from a survey by me in 1933, and according to law, that it limits said area and corners with the marks, monuments and adjacent land, and that I have recorded the same in the Surveyor's Office in Book 2, Page 130 to 134, this the 26th day of October, A.D. 1933.

Forrest Daniell
County Surveyor
Jefferson County, Texas