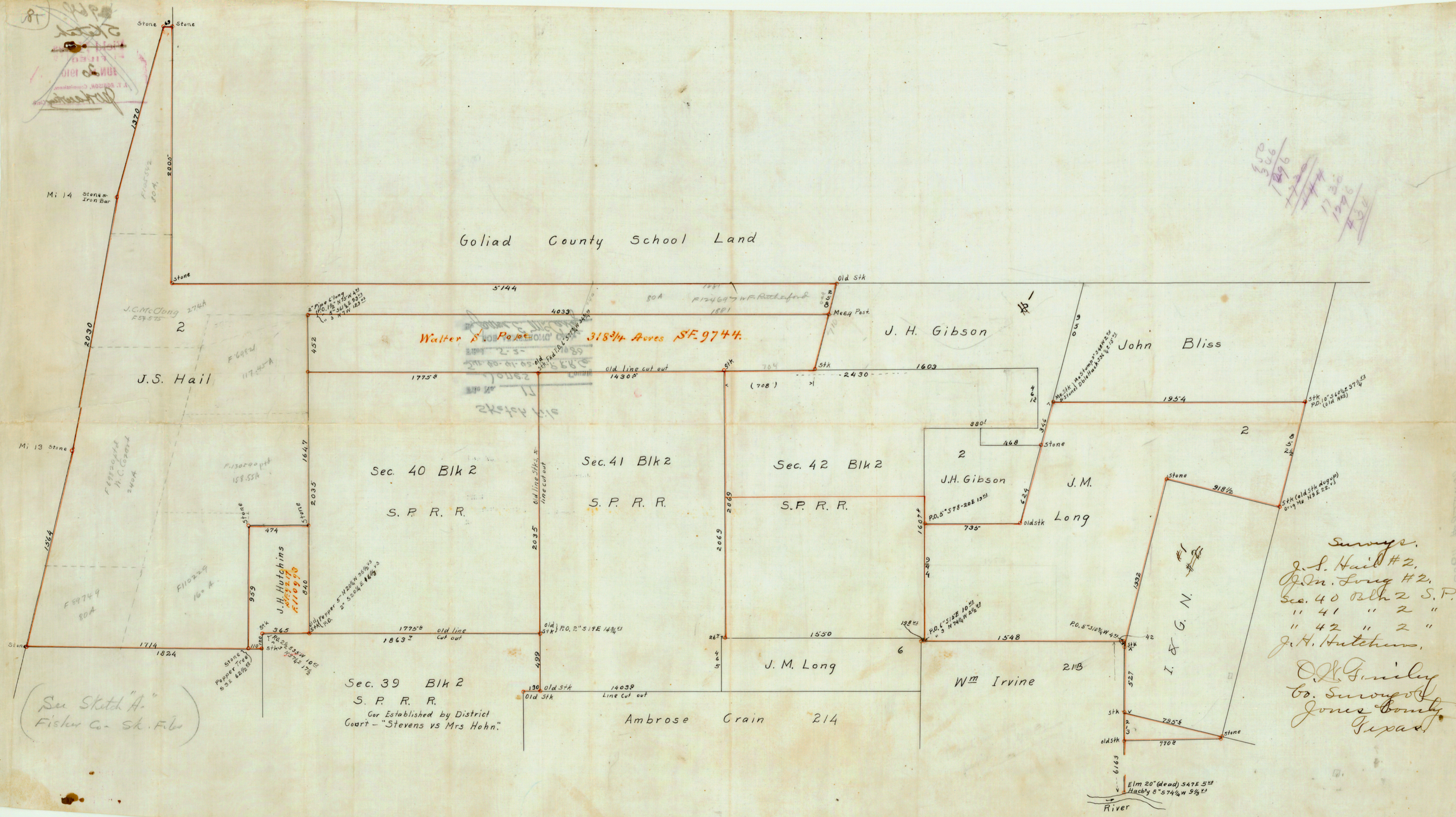


Goliad County School Land

Walter S. Polk 318 3/4 Acres SF. 9744.

550
306
1846
1730
1276
434



Surveys.
 J.S. Hail #2.
 J.M. Long #2.
 Sec. 40 Blk 2 S.P.
 " 41 " 2 "
 " 42 " 2 "
 J.H. Hutchins,
 O.K. Family
 Co. Surveyors
 Jones County
 Texas.

(See Sketch "A"
 Fisher Co. Sh. File)