

640

**FRANK NOWLIN**  
**COUNTY SURVEYOR**  
**KENDALL COUNTY, TEXAS**  
**LICENSED STATE LAND SURVEYOR**

Boerne, Texas Nov. 6th. 1937

Mr. Wm. H. McDonald

Com. Gen. Land Office

Austin Texas; Dear Sir I am submitting Plat and Field Notes, for Mr. R. W. Byrd for Surveys NO. 33, 266, and 264, in Kendall County, situated about  $8\frac{1}{2}$  miles  $S89^{\circ}W$ . from Boerne Texas, this the same land, or rather the same Survey we discussed in your Office on Nov 2ud.

I began at the S.E. corner of Survey NO. 6 Where I found an old s.m. which I understand has always been recognized as the S.E. corner of this Survey; Surveying  $N34^{\circ}E$ . at 3800 vrs. I found an old S.M. for the N.E. corner of Survey NO. 5 Alexander Crain Harris and Brooks, this corner has course and distance from the S.E. corner of NO. 6, and is also located right in reference *to* the calls of the East line of this Survey for the ~~the~~ points where it crosses Pipe Creek.

From this corner I ran a line  $N45^{\circ}E$ . and at 489 vrs. intersected the S.W. line of Survey NO. 260; Thence  $N45^{\circ}W$ . at 1168 vrs I found an old S.M. for the N.W. corner of Survey NO. 266 at 1568 vrs the West corner of Survey NO. 260 from the N.W. corner of Sur. 266 I ran a line  $S45^{\circ}W$ . 716 vrs. and intersected the North line Of NO. 5 finding a conflict of 391 vrs. at this point I placed a ~~2x~~ s.m. for the common corner between Surveys NO. 266 and 264.

I have Surveyed all of the lines of surveys NO. 262, 259, 260, 263, and 264 as indicated by red lines on attached Plat, and found them all correct.

I have tried to construct Surveys NO. 266, and 264 so they would not conflict with NO. 5 C.H. & B.

*Very Respectfully  
Frank Nowlin  
Surveyor*



NO. 2-2-3  
 1900 ac.  
 1000 ac.  
 500 ac.  
 100 ac.  
 50 ac.  
 20 ac.

NO. 2-2-4  
 1722.50 ac.  
 1687.00 ac.  
 1600 ac.  
 1500 ac.  
 1400 ac.  
 1300 ac.  
 1200 ac.  
 1100 ac.  
 1000 ac.  
 900 ac.  
 800 ac.  
 700 ac.  
 600 ac.  
 500 ac.  
 400 ac.  
 300 ac.  
 200 ac.  
 100 ac.  
 50 ac.  
 20 ac.

NO. 2-2-5  
 1300 ac.  
 1200 ac.  
 1100 ac.  
 1000 ac.  
 900 ac.  
 800 ac.  
 700 ac.  
 600 ac.  
 500 ac.  
 400 ac.  
 300 ac.  
 200 ac.  
 100 ac.  
 50 ac.  
 20 ac.

NO. 2-2-6  
 1200 ac.  
 1100 ac.  
 1000 ac.  
 900 ac.  
 800 ac.  
 700 ac.  
 600 ac.  
 500 ac.  
 400 ac.  
 300 ac.  
 200 ac.  
 100 ac.  
 50 ac.  
 20 ac.

NO. 2-2-7  
 1100 ac.  
 1000 ac.  
 900 ac.  
 800 ac.  
 700 ac.  
 600 ac.  
 500 ac.  
 400 ac.  
 300 ac.  
 200 ac.  
 100 ac.  
 50 ac.  
 20 ac.

NO. 2-2-8  
 1000 ac.  
 900 ac.  
 800 ac.  
 700 ac.  
 600 ac.  
 500 ac.  
 400 ac.  
 300 ac.  
 200 ac.  
 100 ac.  
 50 ac.  
 20 ac.

NO. 2-2-9  
 900 ac.  
 800 ac.  
 700 ac.  
 600 ac.  
 500 ac.  
 400 ac.  
 300 ac.  
 200 ac.  
 100 ac.  
 50 ac.  
 20 ac.

NO. 2-2-10  
 800 ac.  
 700 ac.  
 600 ac.  
 500 ac.  
 400 ac.  
 300 ac.  
 200 ac.  
 100 ac.  
 50 ac.  
 20 ac.

NO. 2-2-11  
 700 ac.  
 600 ac.  
 500 ac.  
 400 ac.  
 300 ac.  
 200 ac.  
 100 ac.  
 50 ac.  
 20 ac.

I, Frank Nowlin, Co Surveyor of Kendall County Texas, do hereby certify that the above Plat of lands in Kendall County, Texas represents a survey made by me on the ground on November 30, 1937.  
 Scale 500 varas to 1 inch.

Frank Nowlin  
 County Surveyor of Kendall Co. Texas.

RECEIVED

This same information - 1937  
 is contained on a larger  
 sketch of this and  
 other surveys. It is filed  
 herewith 12/31/37  
 heslie

Sketch File No. 22- B

Kendall County

Sur. Frank Nowlin

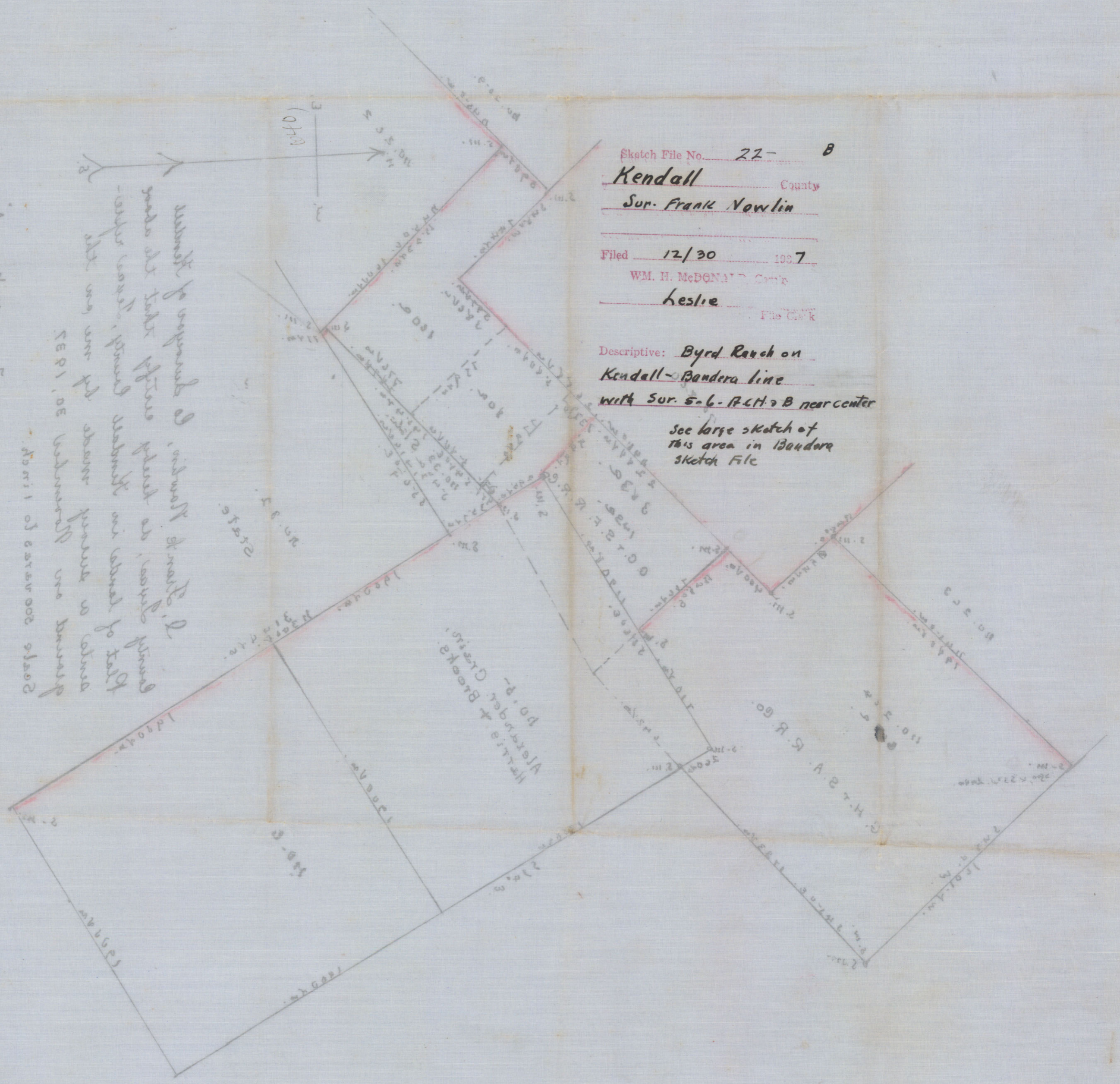
Filed 12/30 1907

WM. H. McDONALD Clerk

Leslie File Clerk

Descriptive: Byrd Ranch on  
Kendall-Bandera line  
with Sur. 5-6-R-11-A-B near center

See large sketch of  
this area in Bandera  
sketch file



A portion of section 21  
 T. 32 N. R. 13 E. S. 21  
 is shown in this sketch  
 and is bounded by  
 the Byrd Ranch line  
 and the Kendall-Bandera  
 line.

This sketch is  
 a portion of the  
 Byrd Ranch survey  
 and is not to be  
 construed as a  
 deed.

FILED

This sketch is  
 a portion of the  
 Byrd Ranch survey  
 and is not to be  
 construed as a  
 deed.  
 12/15/07  
 H. W. [unclear]