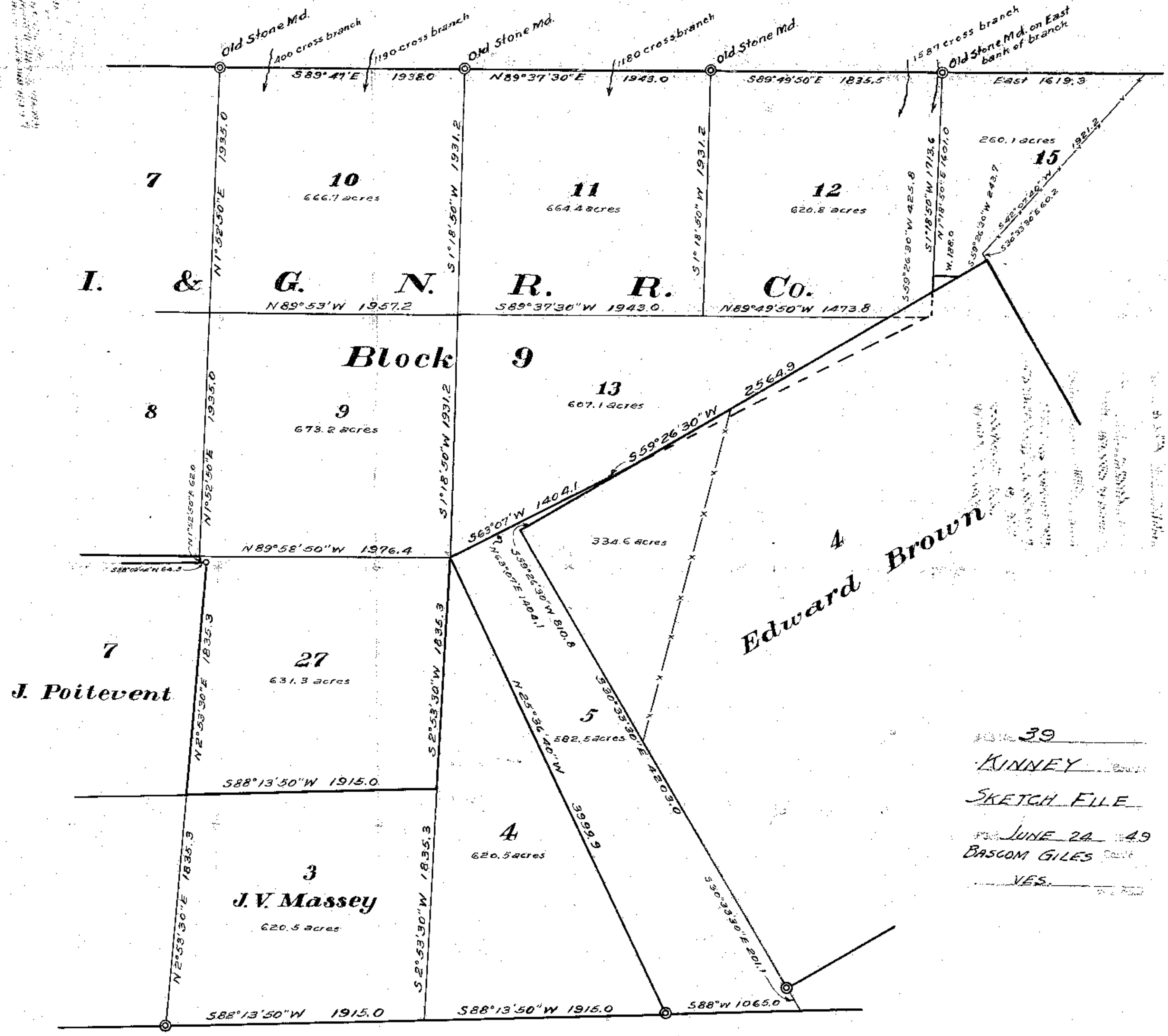


C-1-100

ORIGINAL CORNERS MARKED WITH IRON NAILS
AND
STATIONED
BY
J. A. CONKLIN
SURVEYOR
JANUARY 1, 1948



39
 KINNEY
 SKETCH FILE
 JUNE 24 49
 BASCOM GILES
 VES.

KINNEY COUNTY SKETCH

SCALE 1 IN. = 600 YRS.
 Original Corners marked thus ©

J. A. Conklin, Licensed State
 Land Surveyor, do hereby certify
 that this map is true and correct.
 J. A. Conklin
 Licensed State Land Surveyor

April 1 1948

SKETCH FILE No. 39
 COUNTY KINNEY