

Connecting lines from Sur No 334  
 Antonio Zalazar to Sur 515 &  
 516 B.S. & T. also Sur 63. V. H. 6.  
 J. & M. W. & Sur 424 & 425  
 Pexar Lee School lands in  
 Kinney Co. Tex.

Beginning at  
 S. E. cor of Sur. No. 334. A Zalazar,  
 a st. fr. oak. a Merq 12' br  $S 31 E 5\frac{1}{2} m$   
 do 13' br  $S 62 W 12 m$ .  
 Thence North at 3216 m pass  
 the S. W. cor of Sur. 332. M.  
 Kuykendall a st in earth and.  
 10 x 10 fr. oak. a Merq 6' br  $S 67 E 8\frac{1}{2} m$   
 at 3366 m a creek, at 3531 m another.  
 at 3801 m x Rail Road. at 4566 m  
 pass N. W. cor. of said Sur. 332  
 a st. fr. oak. a Merq stump br  $N 56 E$   
 40 m. do br  $S 73\frac{1}{2} W 34 m$ .  
 at 5223 m the N. E. cor. of said  
 Zalazar Sur. a st. fr. oak. a Merq  
 stump br  $S 11 W 12 m$  other bearing  
 destroyed. Thence West at 2090 m  
 pass S. W. cor of Sur. 335. J. A. Whitaker.  
 a st. fr. oak. a Merq stump br  $N 72 W 25 m$   
 do br  $S 87 W 29 m$ . do. 10' br  $N 52 W 2 m$   
 5125 m to an old and 10 x 10 the  
 N. W. cor of said Zalazar Survey  
 old bearings destroyed a Merq 5' br  
 $N 21\frac{1}{4} W 62 m$  do. 5' br  $S 17 W 44 m$   
 Thence South 471 m the N. E. cor. of  
 Sur 1. V. H. 8 J. & M. W. Kyle a rock and.  
 fr oak Flat Top Mt. br  $S 8 E$ . a lone  
 L. C. br  $S 24\frac{1}{2} E$  abt  $\frac{1}{2}$  mile. Thence  
 West at 215 $\frac{1}{2}$  m pass a large earth  
 and. with post in centre. at cor of  
 pasture fence. at 959 $\frac{1}{2}$  m pass a rock  
 and. at 1347 $\frac{1}{2}$  m pass a T. O. post in

connecting lines from Sur No 334  
 Antonio Zalazar to Surs 515 +  
 516 B.S. & P. also Sur 63. Vsh 6.  
 J & L. W. & Surs 424 + 425  
 Pexar Lee School lands in  
 Hinney Co. Tex.

Beginning at  
 S. E. cor of Sur. No. 334. A Zalazar,  
 a st. fr. mk. a Merq 12' br S 31 E 5 1/2 m  
 do 13' br S 62 W 12 on.  
 Thence North at 3216 on pass  
 the S. W. cor. of Sur. 332. M.  
 Kuyhendall a st in earth end.  
 10 x 10 fr. mk. a Merq 6' br S 67 E 8 1/2 m  
 at 3366 on a creek, at 3531 on another.  
 at 3801 on x Rail Road. at 4566 on  
 pass N. W. cor. of said Sur. 332  
 a st. fr. mk. a Merq stump br N 56 E  
 40 on. do br S 73 1/2 W 34 on.  
 at 5223 on the N. E. cor. of said  
 Zalazar Sur. a st. fr. mk. a Merq  
 stump br S 11 W 12 on other bearing  
 destroyed. Thence West at 2090 on  
 pass S. W. cor of Sur. 335. F. A. Whitaker.  
 a st. fr. mk. a Merq stump br N 72 W 25 m  
 do br S 87 W 29 on. do. 10' br N 52 W 2 on  
 5125 on to an old end 10 x 10 the  
 N. W. cor of said Zalazar Survey  
 old bearings destroyed a Merq 5' br  
 N 21 1/4 W. 62 on do. 5' br S 17 W 44 on  
 Thence South 471 on the N. E. cor. of  
 Sur 1. Vsh 8 J & L. W. Pyle a rock end.  
 fr mk Flat Top Mt. br S 8 E. a lone  
 L. C. br S 24 1/2 E abt 1/2 mile. Thence  
 West at 215 1/2 on pass a large earth  
 end. with post in centre. at cor of  
 pasture fence. at 959 1/2 on pass a rock  
 end. at 1347 1/2 on pass a T. O. post in

(3)

Connection from N.W. cor of Sur  
Sur 63 13th E. to N.W. cor of  
Sur. No. 401 S. Cassiar.

Begin at said N.W. cor of Sur 63.

Thence South 4000 on

Thence S 89 W. 735 on

Thence N 87 W. 1374 on

Thence S 47 W. 675 on

Thence S 21 1/2 W. 926 on

Thence S 30 W. 1126 on

Thence S 70 W. 200 on

Thence N 71 W. 120 on

Thence N 37 W. 159 on

Thence N 83 W. 194 on

Thence N 67 W. 220 on

Thence N 54 1/2 W. 140 on

Thence N 65 W. 120 on

Thence N 55 1/2 W. 80 on

Thence N 69 W. 640 on

Thence N 72 W. 96 on

Thence N 69 W. 100 on

Thence N 42 W. 96 on to a

rock and, the N.W. cor of Sur

401 S. Cassiar fr. wh. a Merq

4 feet high 15' dia br S 4 E 51 on

do 11' br S 53 E 43 on.

Thence S 20 E. 1344 on pass a rock

and, S. E. cor of said Sur 401. at

2840 on a point. Thence N 70 E

300 on the S.W. cor. Sur 402 & N.W.

cor of Sur 425 a. 13 on a st. fr.

wh. a Merq 14' br N 84 W 31 on

a small live Oak on wh br

S 22 1/2 W 70 on could not find T.O.

tree nor stump.

Thence S 20 E. 1900 on st & end, no

(4)

Trees near. Thence N70E at 354 on  
Creek at 950 on point. (found  
nothing) Thence S20E 1900 on  
it and the S.E. cor of Sur. 431,  
made a rock and fr. wh. a L.O. 6' br  
S 37½ E. 69½ on do 12' br S 81 E 123 on.

Returned to S.W. cor of Sur 401  
a rock and, old bearing trees  
destroyed.

Thence N70E. at 200 on an  
open flat, no timber near,  
at 310 on strike timber, could  
not find old bearing trees  
at 682 on x Creek (Elm) at 1280 on  
x old road, at 1300 on road,  
at 1344 on a it for S.E. cor 401,  
plenty of Merq. but no Lignum  
Vitae, at 1544 on, an open flat,  
no timber nearer than 100 yards,  
N.E. cor 402.

Thence S20E. at 420 on old San  
Antonio & El Paso Road, at 1450 on  
point for cor S.E. of Sur 402, no  
trees near, from said cor  
S70W to Creek East bank in 156 on  
to West bank in 202 on.

Beg again at S.E. cor of 402.

Thence N70E at 584 on, a point  
fr wh a rock and N.E. cor 425  
br S20E. 82 on, from said  
rock and a Merq 6' whd br

⑤

S  $30\frac{1}{2}$  W. 33 on a Merq stump 15' br  
S  $62\frac{1}{2}$  E. 92 on. Thence S 20 E at  
140 on x old road. 615 on a rock  
and N. W. cor of Sur. 513. fr. oak.  
a Hackberry 5' br S  $55\frac{1}{2}$  E  $7\frac{1}{2}$  on do 2'  
br S 30 E.  $6\frac{2}{5}$  on.

Thence N 70 E. 1344 on a rock and.  
N. E. cor. 513 fr. oak. a double Merq.  
whd. br N  $56\frac{1}{4}$  E. 214 on.

Thence S 20 E. 1344 on a rock and.  
the S. E. cor of 513. fr oak a Merq  
stump br N  $52\frac{1}{2}$  E 78 on. do br  
N  $56\frac{1}{2}$  E 80 on. Thence N 70 E 550 on  
x N 20 W 35 on a rock and  
the N. E. cor of Sur. 515 fr oak a 2  
pronged Merq. 12' br N  $24\frac{1}{4}$  E 195 on.

I hereby certify, that the above  
connecting lines, were actually  
made on the ground.

E. F. Hodger,  
Geo. Surv. Kinney Co.

KINNEY CO. ST. FILE # A-1

EA Sprain Austin

Chenestown

counter 29115

Connecting line from N.W. cor  
339 Thos A. Watson to N.W. cor  
334 A. Zalazar.

I began at a rock and  
the N.W. cor of 339. Thos A.  
Watson. + N.E. cor. of 340 L.  
Kratz. fr. oak. a Merq stump  
3 feet high br S 73 E 30 m.  
do br N 71 W 23 m  
Thence East at 388 m a fence.  
course N + S. at 2753 m a  
point fr. oak. a small dirt  
and br South 30 m.  
Went to N.E. cor. of Sur 1. Bk 5.  
D + G. W. a rock and. which  
is South 471 m from N.W.  
cor of Sur. 334 A. Zalazar.  
Thence South with West  
line of said Sur 334.  
at 2610 m a point the  
intersection of North line  
of said Sur 339. with West  
line of Sur 334. distant 182  
m East from the 2753 m  
point. a stake for S.E. cor  
of Sur 1. Bk 5 D + G. W. (no  
timber near) fr. oak. the

Eastern point of Anacasio  
Wth br East. Flat Top  
br S 13 E. The most Western  
point of Anacasio Wth br  
S 27<sup>3</sup>/<sub>4</sub> W

The actual distance between  
N. W. cor. of Sur. 339 & N. W. cor.  
of Sur 384 is 2935 on  
East & 3081 on North.

I hereby certify  
that the above lines were  
actually run on the ground

C. J. Hodger,  
Svr. Sur. Mining Co.

Feb 24<sup>th</sup> 05



Sketch A1. ~~15~~, A1  
Kinney County,  
Connecting Lines,  
Showing Connections of the  
Surveys shown on SK A1. filed  
on even date herewith.

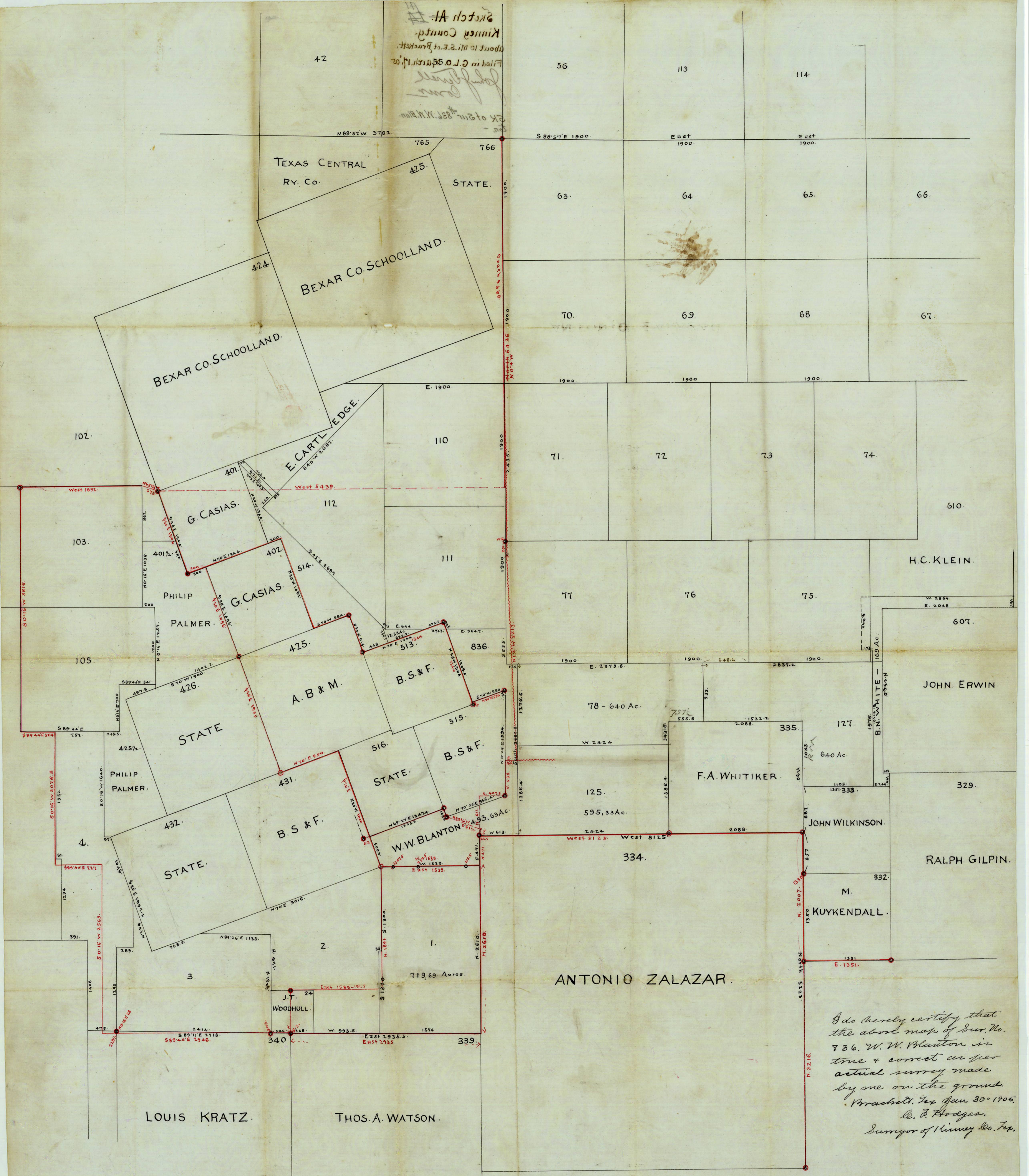
Filed in G.L.O. March, 17, 1905,

John J. Terrell  
Comm

counter 29118

E. A. Travis Austin.

Sketch A  
Kinney County  
About 10 mi. S.E. of Brackett  
Filed in G.L.O. 95411102  
John Blanton  
Sx of sur. 854 N.M. 1100  
1906



I do hereby certify that  
the above map of Sur. No.  
786, W.W. Blanton is  
true & correct as per  
actual survey made  
by me on the ground.  
Witnessed, Tex Jan 30<sup>th</sup> 1906  
C. P. Hodges,  
Surveyor of Kinney Co., Tex.

COUNTER # 1192