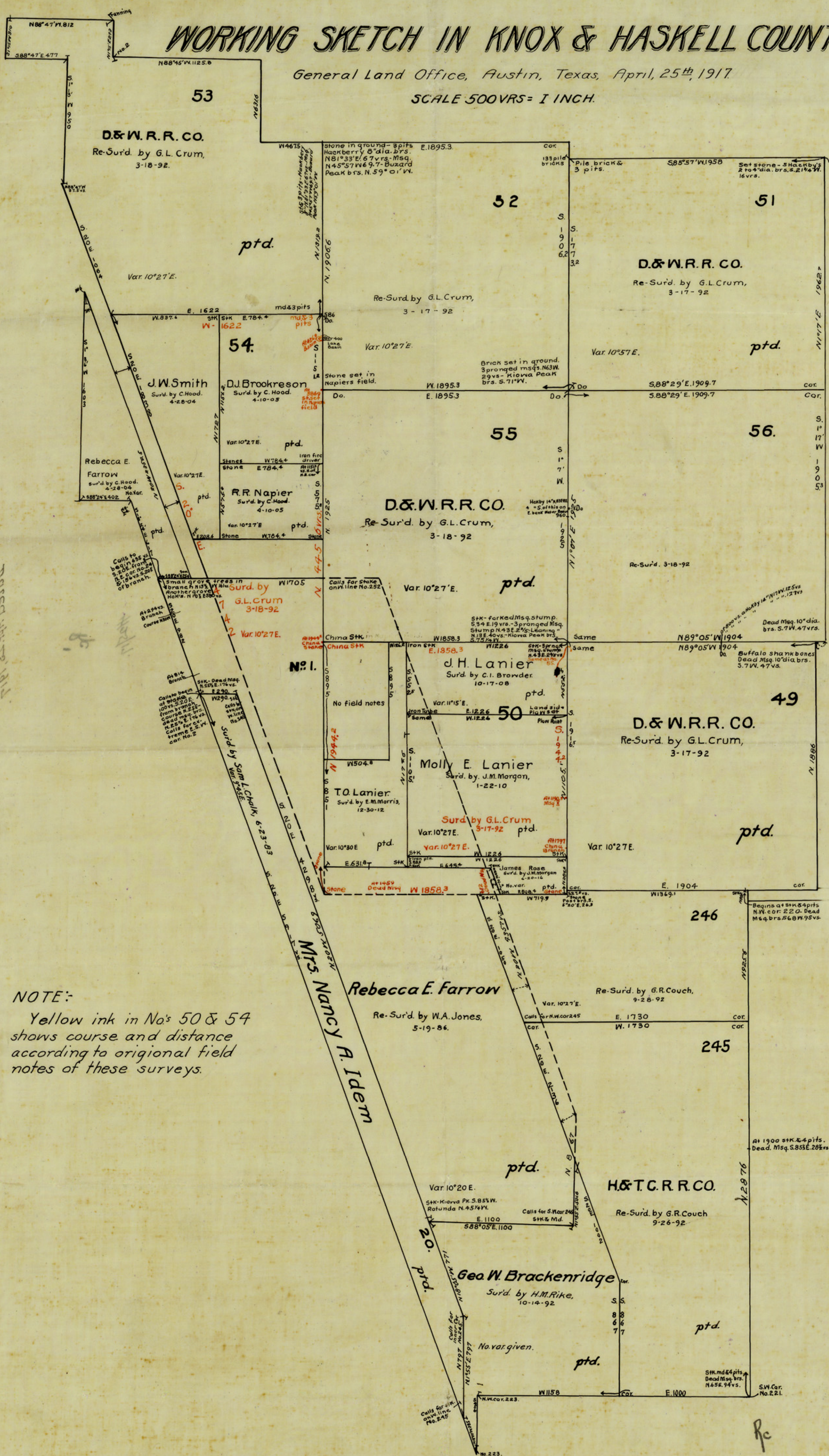


WORKING SKETCH IN KNOX & HASKELL COUNTIES

General Land Office, Austin, Texas, April, 25th, 1917.

SCALE 500VRS = 1 INCH.



NOTE:-
 Yellow ink in Nos 50 & 54
 shows course and distance
 according to original field
 notes of these surveys.

Marked in yellow
 in original survey
 in Knox & Haskell Counties
 in yellow ink
 SO.