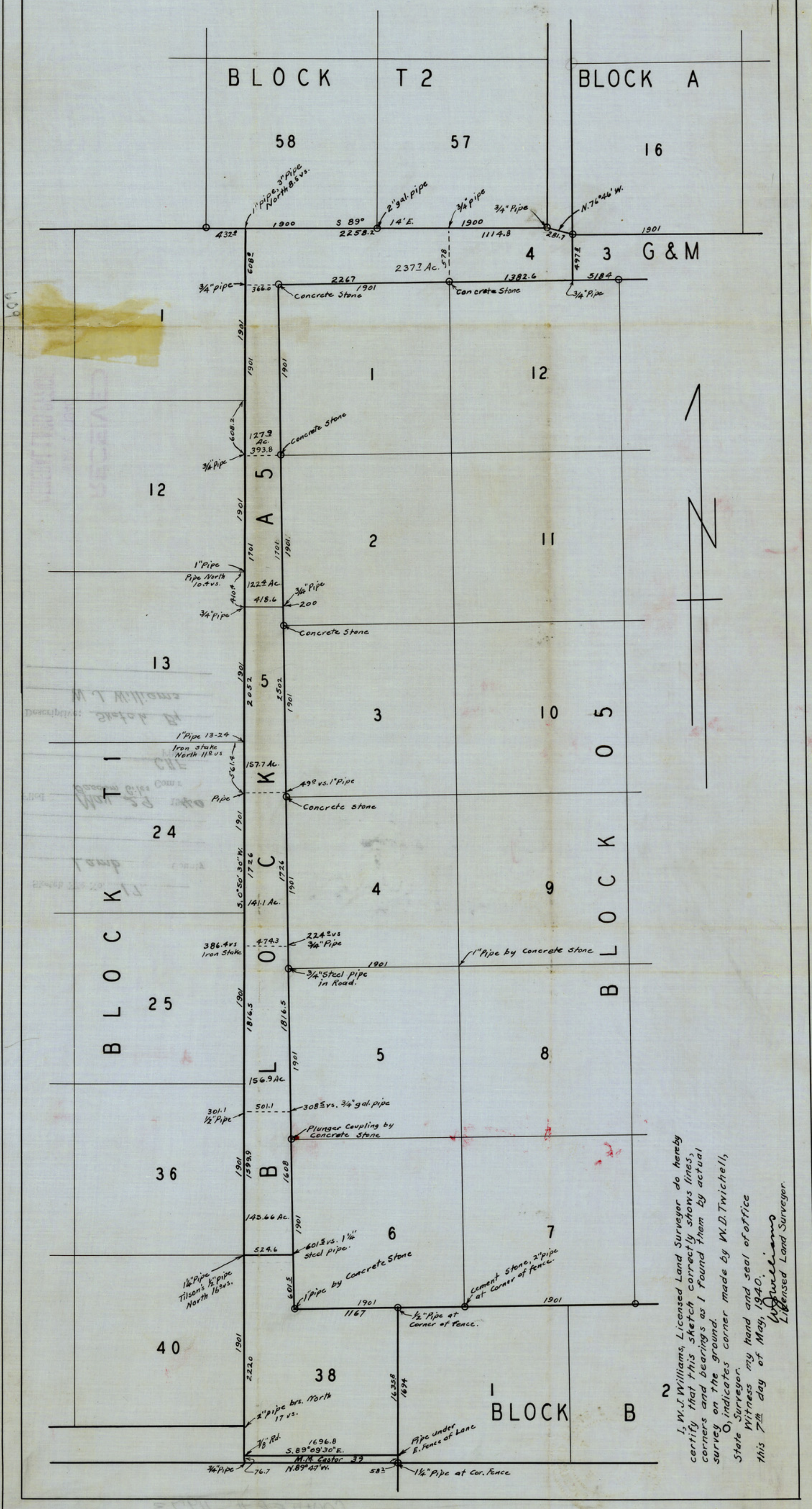


SKETCH IN LAMB COUNTY TEXAS



I, W.J. Williams, Licensed Land Surveyor do hereby certify that this sketch correctly shows lines, corners and bearings as I found them by actual survey on the ground.
O indicates corner made by W.D. Twichell, State Surveyor.
State Witness my hand and seal of office this 7th day of May, 1940.
W.J. Williams
Licensed Land Surveyor.