



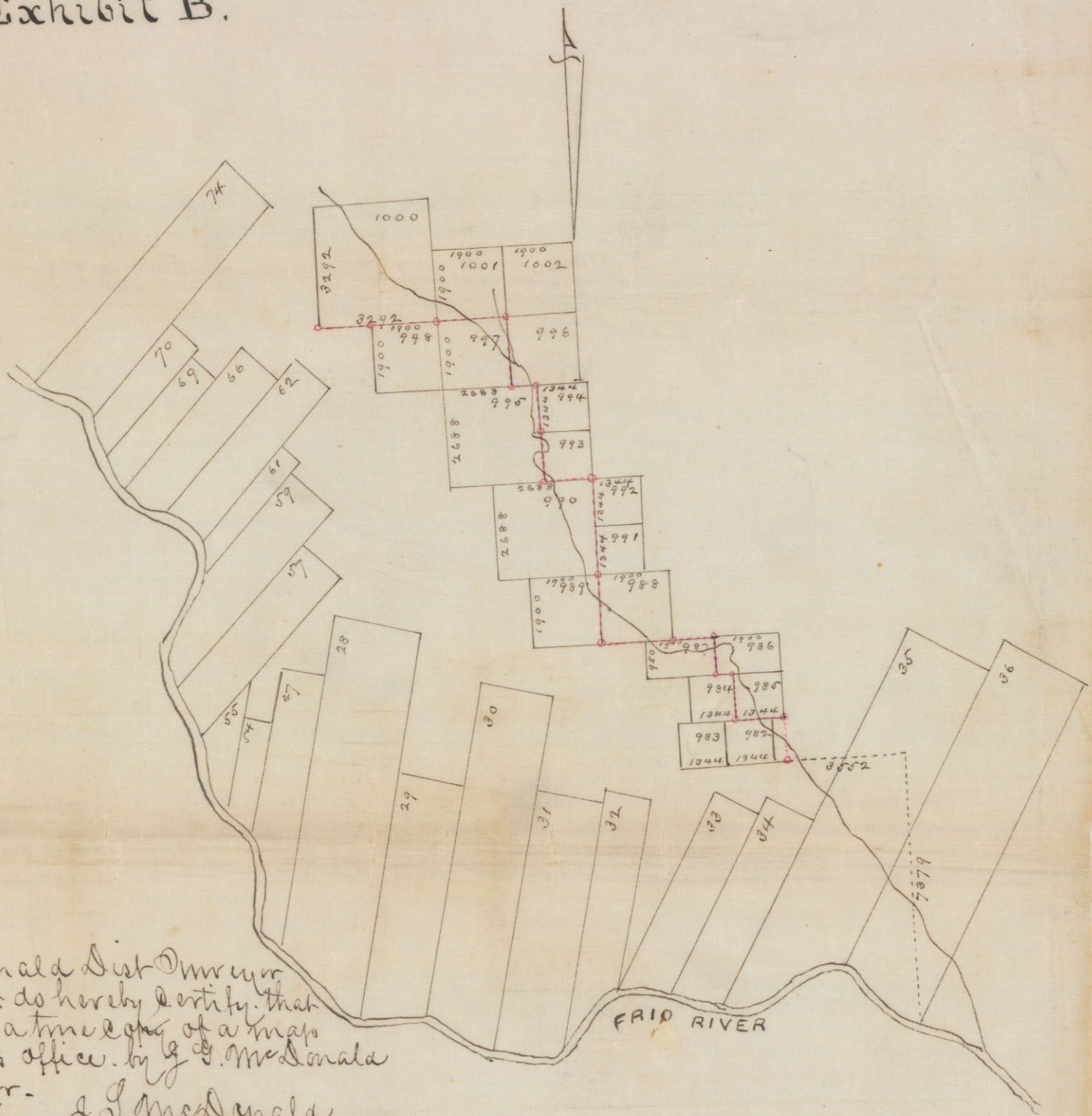
Exhibit A.

Scale. 2000 varas 1 inch

22

Exhibit B.

1000



I. J. McDonald Dist Surveyor
 Bexar District do hereby certify that
 the foregoing is a true copy of a map
 returned to this office by J. J. McDonald
 deputy Surveyor.

J. J. McDonald
 Dist. Surveyor Bx Dist.
 San Antonio
 March 3. 1857.

21

Copy of J. S. McDonald's sketch
 filed March 3, 1852, Filed
 June 16, 1883
 North of Rio Erio



J. S. McDonald District
 Surveyor Bexar District do
 hereby certify that the foregoing
 is a true copy of a map returned
 to this office By J. S. McDonald
 deputy Surveyor
 San Antonio
 March 3, 1852

J. S. McDonald
 Dist Surveyor Bexar District - Rio Erio

Gen. Land Office Austin Texas June 16th 1883

I W. C. Walsh Commissioner Gen'l Land Office do hereby certify
 that the above is a true copy of sketch file No. 44 in Mullen County
 now on file in this Office

W. C. Walsh
 Commissioner Gen. Land Office

20th

Copy of J S McDonalds SK. dated March 3, 1852. Filed June 16, 1883.

North of Frio River.



of Mr. McDonald's
 survey of the
 land in the
 county of
 San Antonio,
 Texas, 1852.

Gen. Land Office Austin Texas June 16th 1883
 I the undersigned Commissioner of the General Land Office do hereby certify
 that the above is a true copy of the original as the same is on file in this office

W. C. Hatcher
 Commissioner, Gen. Land Office