

D-48

RECEIVED
OFFICE OF THE
COUNTY CLERK
COUNTY CLERK'S OFFICE, A. B. & M. SUR. 64

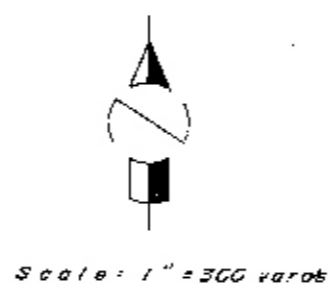
RESURVEY OF THE

LOCATED ABOUT

2.5 MILES S 14° W

FROM

COTULLA, LASALLE COUNTY
TEXAS



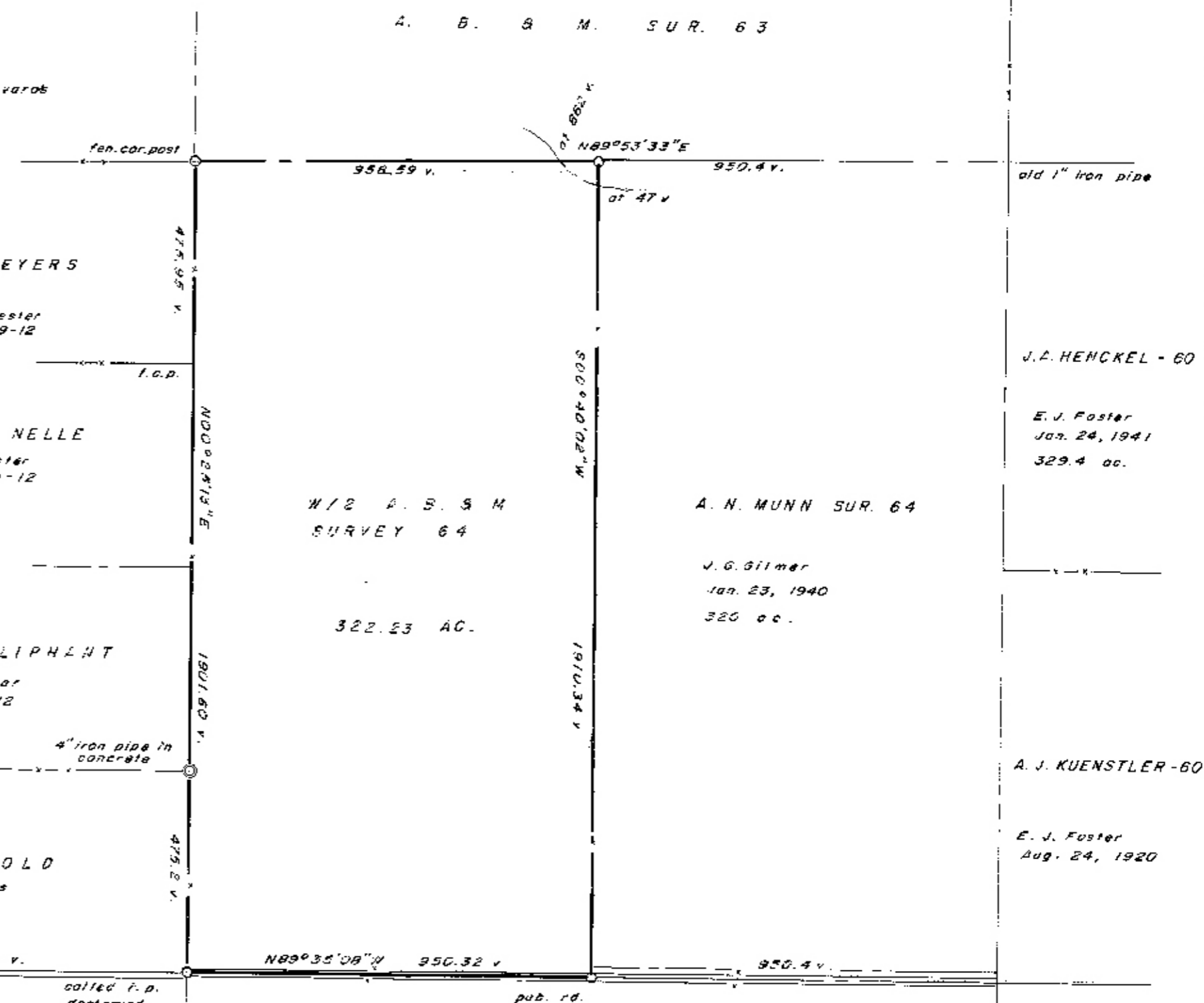
I, Frank J. Schorp, do hereby certify that the foregoing plat was prepared from actual survey made on the ground under my supervision and completed March 16, 1984.

Frank J. Schorp
Licensed State Land Surveyor

State of Texas
County of La Salle
This certifies that the foregoing plat was recorded by me on the 36th day of March 1984.

Donna Mae Taylor
County Clerk
By: Carson White, Deputy

File No. Sk. File 51
La Salle County
Plat
Filed Apr. 4 1984
GARRY MAURO, County Clerk
By H. Fisher



A. B. & M. SUR. 63

M. MEYERS

Sylvester
12-19-12

W. H. NELLE

Sylvester
12-19-12

J. POITEVENT - 70

W/2 A. B. & M.
SURVEY 64

A. N. MUNN SUR. 64

J. G. Gilmer
Jan. 23, 1940
320 ac.

J. A. HENCKEL - 60

E. J. Foster
Jan. 24, 1941
329.4 ac.

A. W. OLIPHANT

Sylvester
12-19-12

J. W. ARNOLD

C. A. Douglas
3-3-1963

A. J. KUENSTLER - 60

E. J. Foster
Aug. 24, 1920

V. LINK SUR. 64