

SCALE 1000 VRS. = 1 INCH.

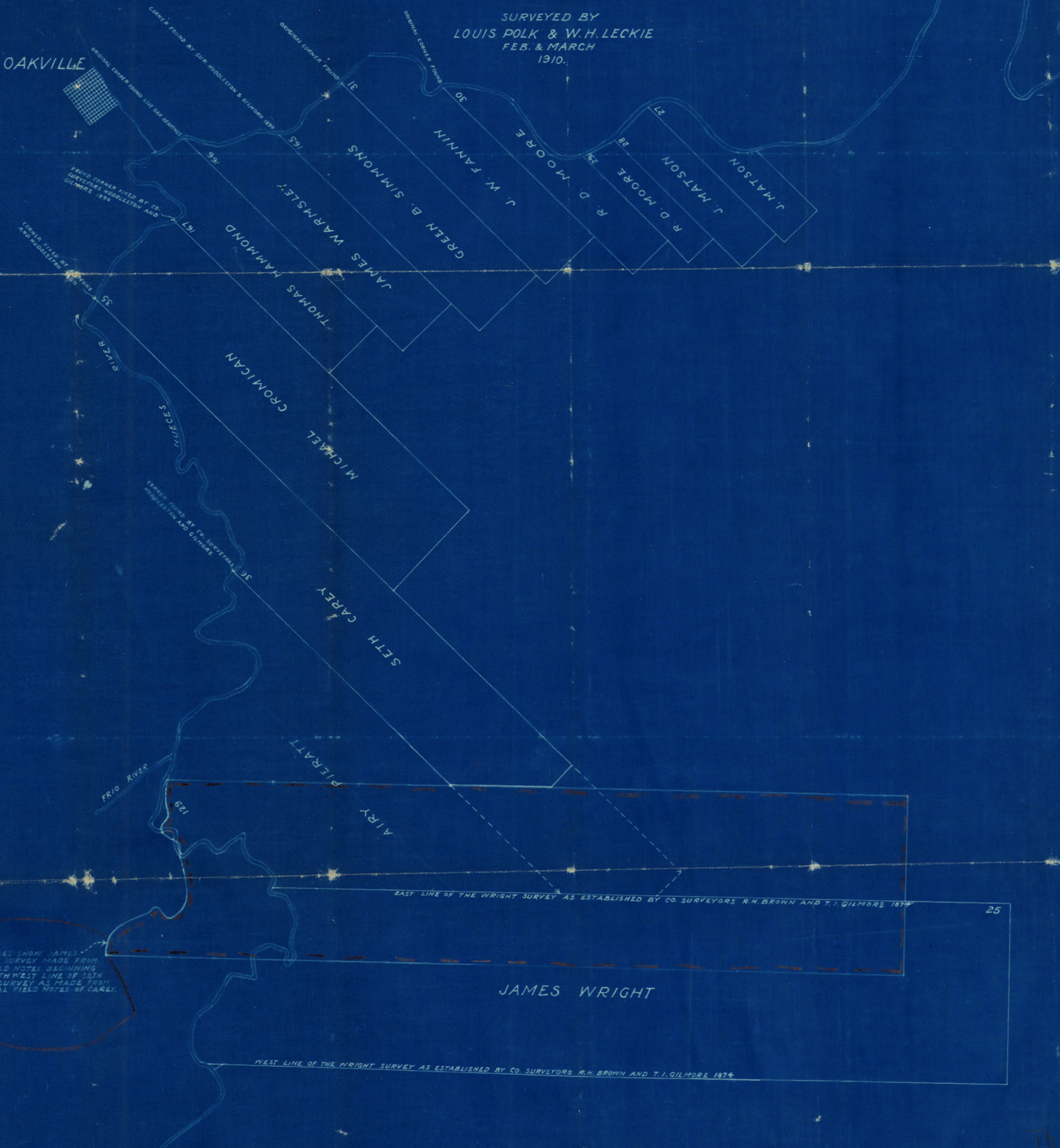
# ACCURATE SURVEY OF THE NUECES RIVER

FROM  
UPPER CORNER OF THE WRIGHT  
TO  
LOWER CORNER OF THE FANNIN  
SURVEY.

SURVEYED BY  
LOUIS POLK & W.H. LECKIE  
FEB. & MARCH  
1910.

*Original of this survey made by W.H. Leckie of Live Oak, Texas July 1910*

OAKVILLE



RED LINES SHOW JAMES WRIGHT SURVEY MADE FROM ITS FIELD NOTES BEGINNING ON SOUTH WEST LINE OF 56TH CAREY SURVEY AS MADE FROM ORIGINAL FIELD NOTES OF CAREY.

Th