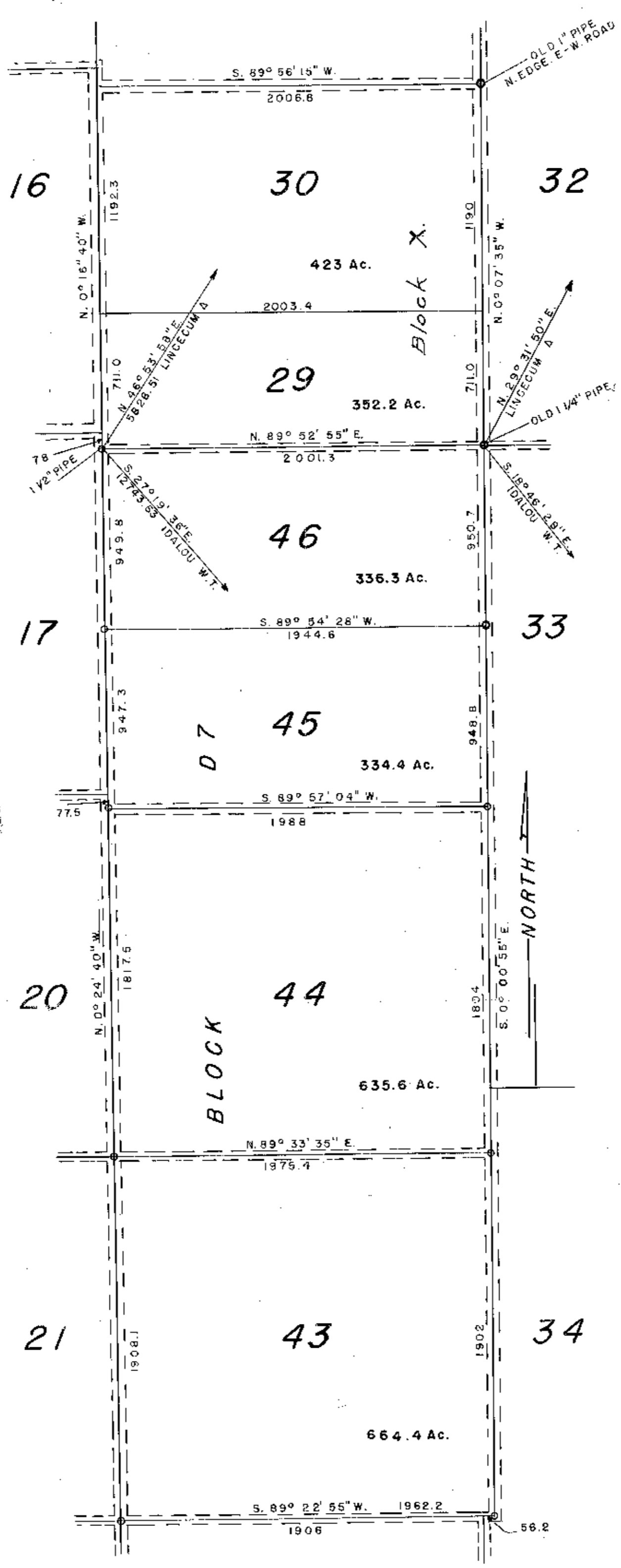


RECEIVED  
 JUN 15 1952  
 COUNTY CLERK



SKETCH IN  
 LUBBOCK COUNTY

MERIDIAN THRU LUBBOCK MUNICIPAL  
 STANDPIPE.

THIS PLAT IS TRUE AND CORRECT.

*W. Williams*  
 W. WILLIAMS  
 LICENSED STATE LAND SURVEYOR  
 PLAINVIEW, TEXAS  
 JUNE 4, 1952



SKETCH FILE NO. 13  
 COUNTY LUBBOCK

2-16