

SKETCH OF CERTAIN SURVEYS
 IN
MARION COUNTY,
TEXAS.

According to a survey made by
 W. H. LECKIE, from April to August, 1910.

Scale - 1 Inch to 1000 Yards.

Note - Given distances are actual measurements
 from identified corners, with 40-Yard steel tape.
 At original corners one or more original bearing trees
 were found.
 "Old Corners" are old re-marked corners.
 Small numerals at Mile Mounds on State Line indicate distance
 from last identified Mile Mound, running north.

Herewith I enclose a hastily constructed plat, but which
 outlines correctly a part of my work in that county in 1910.
 All the distances given are as actually measured; and Jim's Bayou is sketched in from
 close meanders, except from the J. Williams N.E. corner
 up to the N.E. cor. of the largest Ed. Meyer tract.

(Signed) Wm. H. Leckie
 Range Texas
 Feb. 1st 1912.

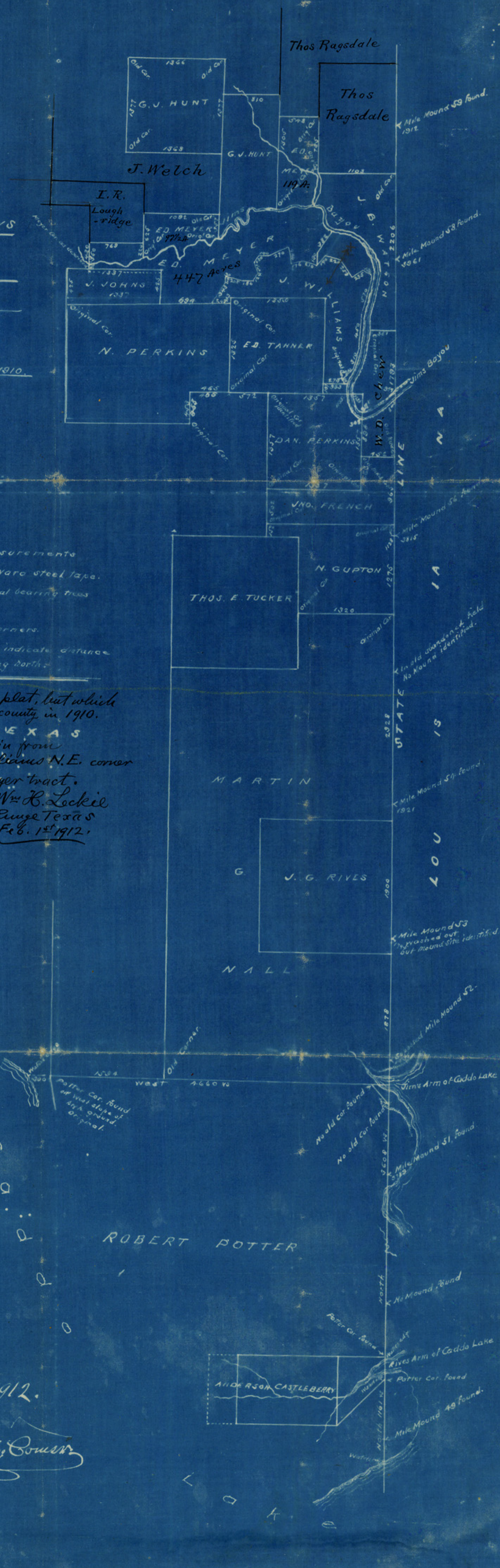


Water
 No old cor. found
 or west slope of
 high ground.
 original

No old cor. found
 No old cor. found
 Mile Mound 51, found

No Mound found
 Potter Cor. found

Potter Cor. found
 Mile Mound 49 found



Filed, February 3rd 1912.
 J. H. Tucker
 Chief Clerk Acting Com. Sec.