

THIS PLAT

of the subdivision of land tributary to Palacios,
Texas, made for

WILDMAN-CAMPBELL LAND CO.

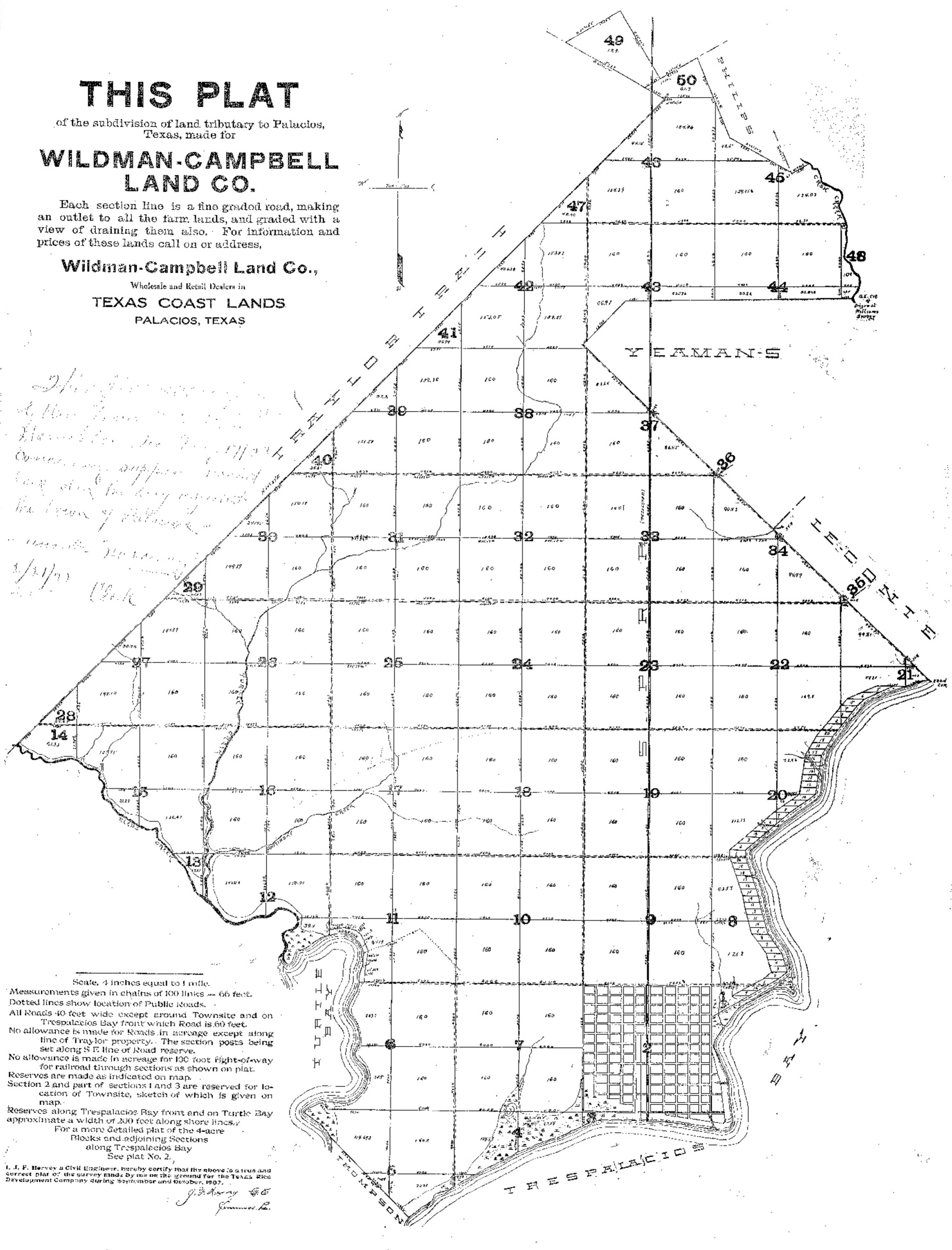
Each section line is a fine graded road, making
an outlet to all the farm lands, and graded with a
view of draining them also. For information and
prices of these lands call on or address,

Wildman-Campbell Land Co.,

Wholesale and Retail Dealers in

TEXAS COAST LANDS
PALACIOS, TEXAS

Handwritten notes:
This is a survey of the land
of the Wildman-Campbell Land Co.
located in the Township of
Cameron, County of Palacios,
State of Texas.
The land is divided into
sections of 360 acres each.
The survey was made by
J. J. Harvey, Civil Engineer,
in the month of October,
1907.



Scale, 4 inches equal to 1 mile.
Measurements given in chains of 100 links -- 66 feet.
Dotted lines show location of Public Roads.
All Roads 40 feet wide except around Townsite and on
Trespalacios Bay front which Road is 60 feet.
No allowance is made for Roads in acreage except along
line of Traylor property. The section posts being
set along S E line of Road reserve.
No allowance is made in acreage for 100 foot right-of-way
for railroad through sections as shown on plat.
Reserves are made as indicated on map.
Section 2 and part of sections 1 and 3 are reserved for
location of Townsite, sketch of which is given on
map.
Reserves along Trespalacios Bay front and on Turtle Bay
approximate a width of 200 feet along shore lines.
For a more detailed plat of the 4-acre
Blocks and adjoining Sections
along Trespalacios Bay
See plat No. 2.

I, J. J. Harvey a Civil Engineer, hereby certify that the above is a true and
correct plat of the survey made by me on the ground for the Texas Rice
Development Company during September and October, 1907.
J. J. Harvey
Civil Engineer