

BLOCK 17.

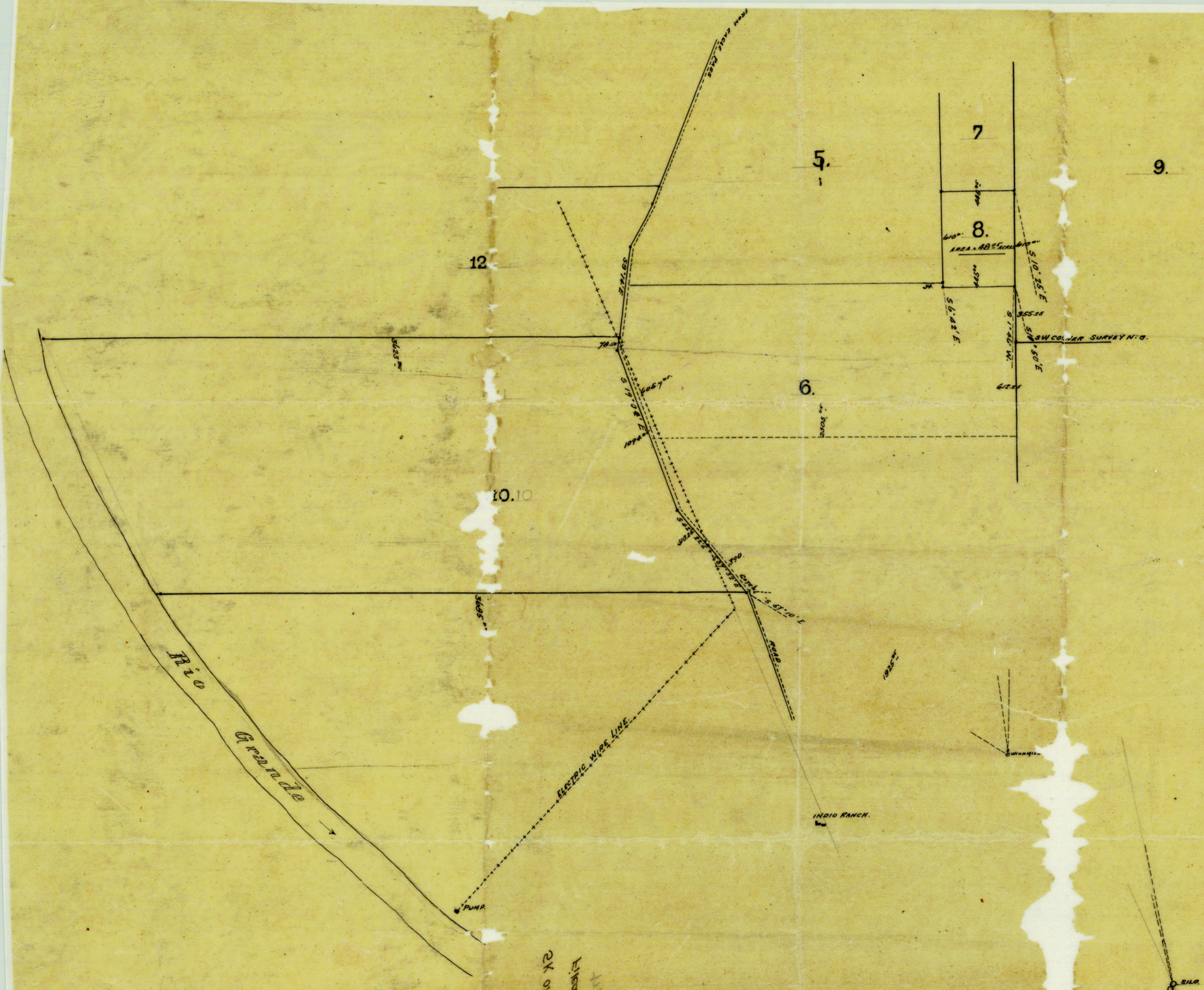
Plan
of
Survey No. 8.

MAVERICK COUNTY, TEXAS.

EAGLE PASS, JULY 22nd 1914.

SCALE 1" = 400 YARDS.

COMPLETION 15022



OK of 2/11/18
 1/10/18
 1/10/18
 1/10/18

1/10/18
 1/10/18