

File 26

Sketch file 26
McMullen County

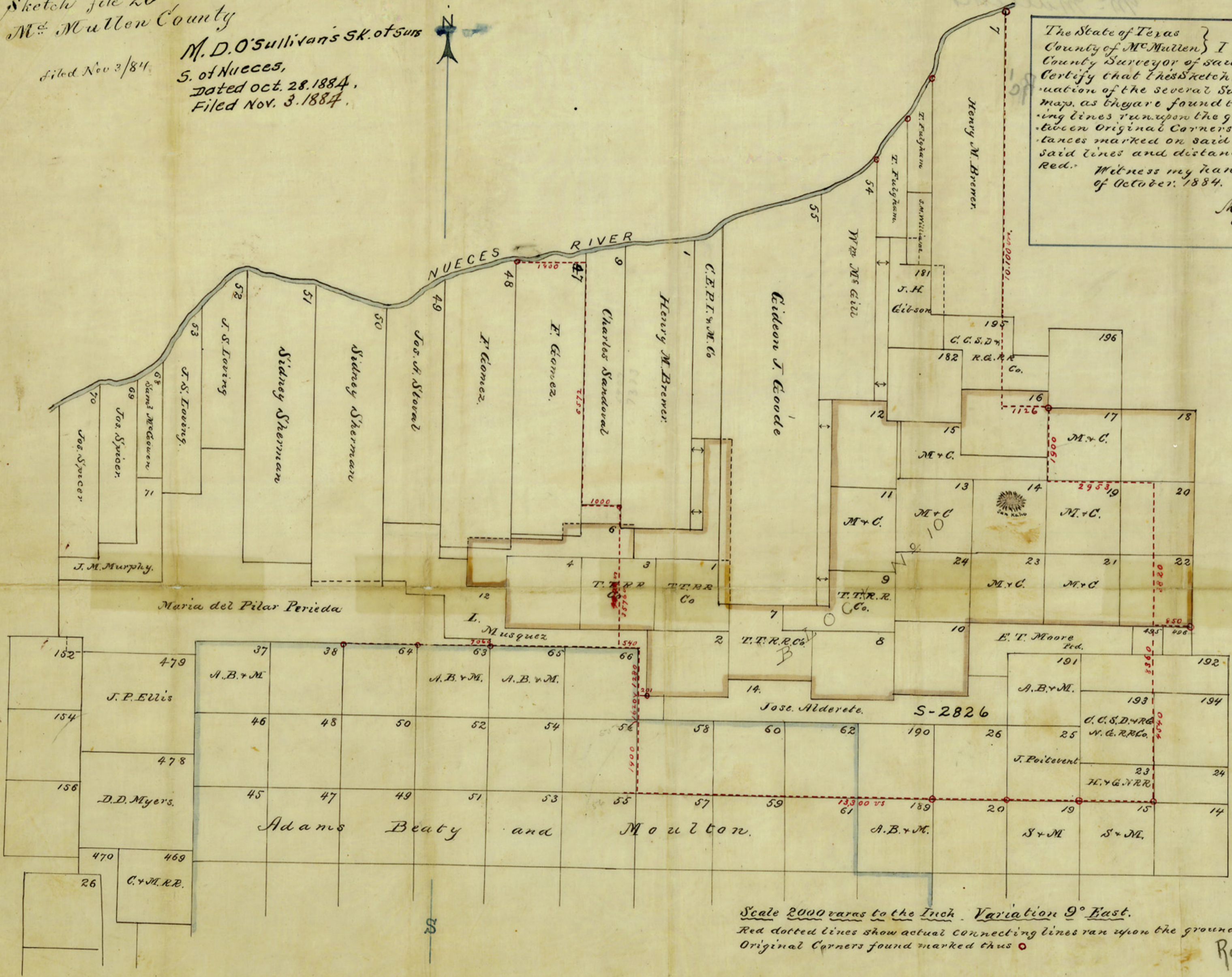
filed Nov 3/84

M. D. O'Sullivan's SK. of SURS
S. of Nueces,
dated Oct. 28, 1884,
Filed Nov. 3, 1884.



The State of Texas }
County of McMullen } I. M. D. O'Sullivan
County Surveyor of said County, Do hereby
Certify that this Sketch, truly shows the sit-
uation of the several Surveys shown on said
map, as they are found to be by actual Connect-
ing lines run upon the ground from and be-
tween Original Corners found, and all dis-
tances marked on said map, are truly stated.
said lines and distances are marked in
Red. Witness my hand this the 28th day
of October, 1884.

M. D. O'Sullivan
Co. Sur. McM. Co.



Scale 2000 varas to the Inch. Variation 9° East.
Red dotted lines show actual connecting lines run upon the ground
Original Corners found marked thus ○

Filed Novemb. 3^d 1884
G. N. Robinson
Clk. Ck.