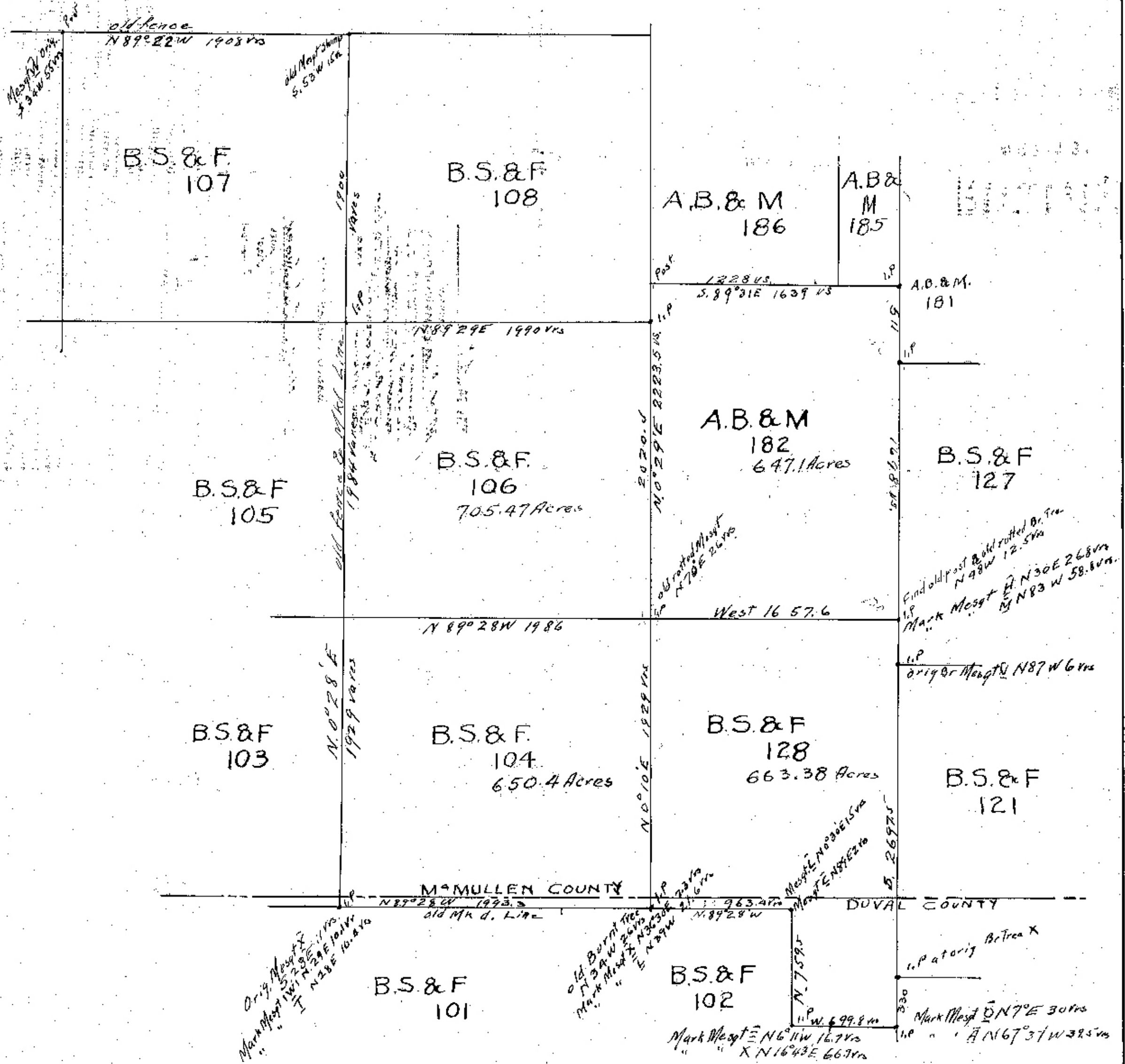


PLAT OF A
RESURVEY OF SURVEYS NUMBER
A.B.&M 182, B.S.&F 104, 106 & 128
IN M^cMULLEN & DUVAL COUNTY
TEXAS

MADE FOR MRS. W. T. WALKER
Surveyed by W.S. Goff County Surveyor
M^cMullen County, Texas, February 1939
Scale 1 in. = 600 Yards Var. 9°45' East



I, W.S. Goff County Surveyor of M^cMullen County
Texas, hereby certify the foregoing plat was
made from an actual Survey made by me
on the ground

W.S. Goff
County Surveyor M^cMullen Co., Tex.