



J.T. ROBISON, COMMISSIONER.
J.H. WALKER, CHIEF CLERK.

17.
General Land Office.

17.
*Sundry papers,
State of Texas. Sketches, Corres-
pondence, etc.
Austin. Dated Jan. 23, 1914. etc.*

SK File A
Menard B

January 23, 1914.

West Texas Land Company,
Menard, Texas.
Gentlemen:-

In compliance with yours of the 2nd ultimo, and the several reminders of the 12th and 19th instants, beg to say I have prepared the enclosed blue print plat from the official map of Concho County, to which I have added a number of surveys in Menard County, according to recognized data of record on file, showing the correct relative position of the several surveys shown thereon. The strip in yellow appears to be vacant unsurveyed school land, subject to sale under Act of February 22, 1900 and amended April 15, 1905. The owner in whose enclosure this strip may be should take the matter up with the county surveyor. See blanks herewith enclosed.

Delay in furnishing the plat could not be avoided in consequence of the crowded condition of the Drafting Department. Fee for plat \$1.00 which please remit and oblige.

Respectfully,

E von R/LSN

Acting Commissioner.



General Land Office,

State of Texas.

Austin.

JOHN J. TERRELL, COMMISSIONER.
J. T. ROBISON, CHIEF CLERK.

Nov. 13, 1906.

Mr. D. H. Palmer,
Menardville, Texas.

Dear Sir:-

In resurveying State School Land, I would respectfully call your attention to the Act of March 22nd, 1889, 21st Legislature, Chapter 90, pages 103-4: "An Act to provide for the ascertainment, distribution and sale of excesses in surveys of land made for the School Fund, etc." See same in Revised Statutes of 1895, Articles 4274-5. I simply call your attention to the law, as I see that you have returned field notes of subdivision of section #22, T. & N. O. Ry. Co., certificate 30/458, block G, sold to Mr. Burnam, about 6 miles N-W from Menardville calling for only 640 acres. Said section, according to a certified sketch filed in this office Sept. 29, 1892 by Arthur Striegler, county surveyor, contains about 715 acres. In the old Colony survey on its south, the length of the line is given as 2043 vrs E. and W/ and about 1980 vrs N. and S., while you have simply given them course and distance 1900 vrs square.

I think it is my duty as Land Commissioner to call your attention to this matter in the interest of the School Fund of the State.

Yours truly,

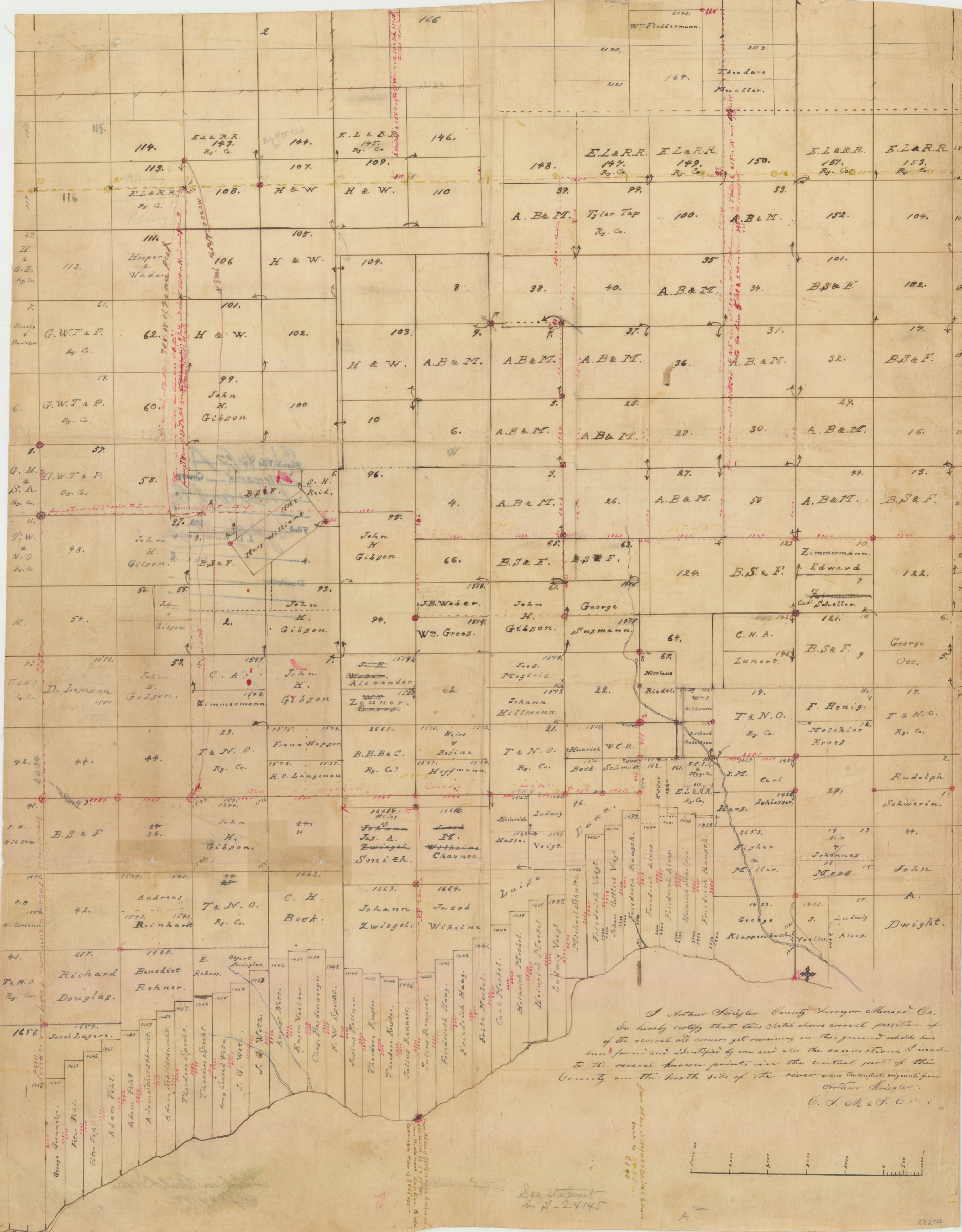
E. von R-Guyer

Act'g. Commissioner

*See Explanation in S-22822
Geo M Williams & K. in S-15504*

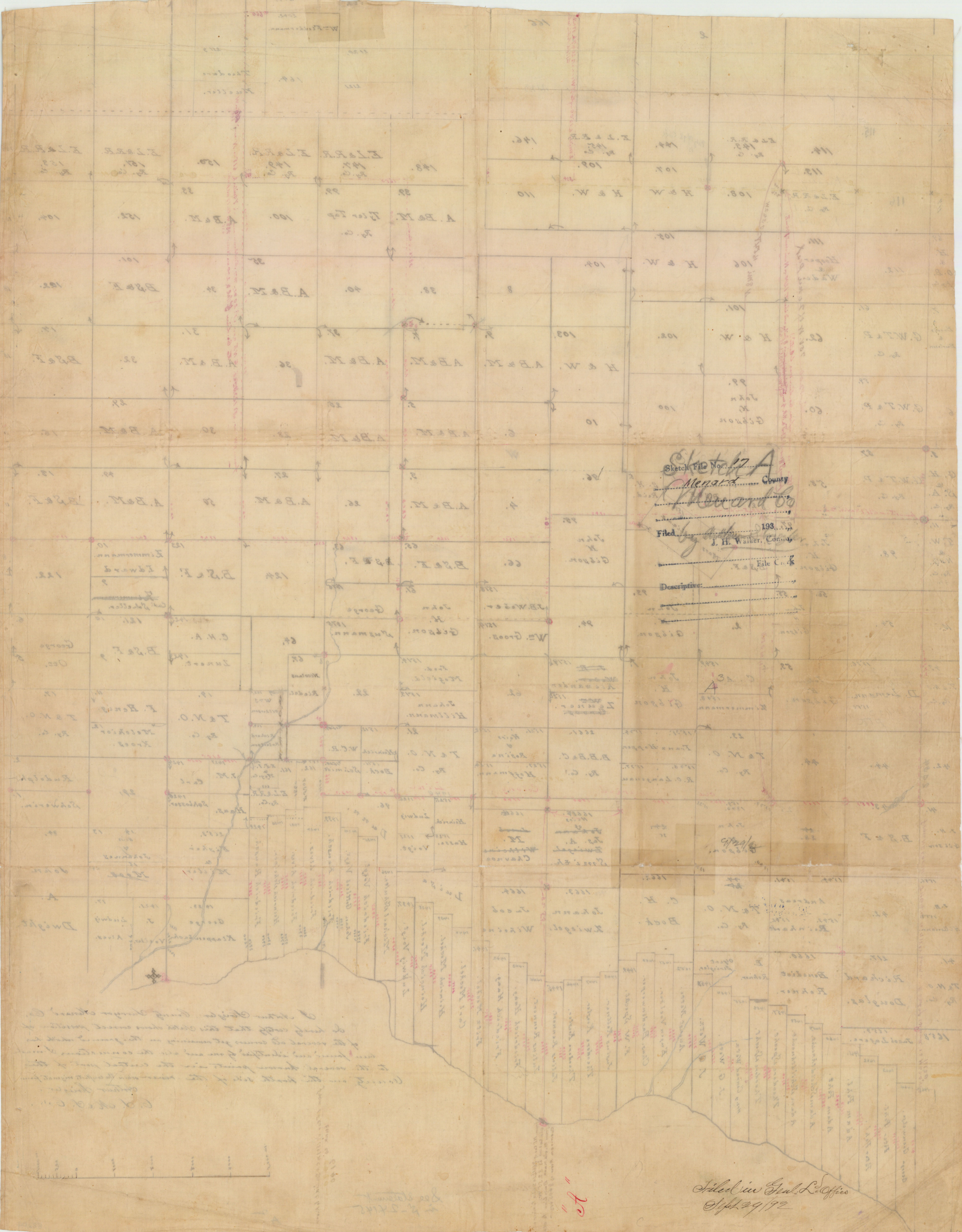
A'

88203



I Arthur Krueger, County Surveyor Menard Co.,
 do hereby certify that this sketch shows correct position of
 of the several old corners yet remaining on the ground which has
 been found and identified by me and also the connections I made
 to the several known points in the central part of the
 County on the north side of the river where the original farm
 of Arthur Krueger.
 C. S. M. & S. Co.

See statement
 in p. 24145



Sketch File No. 100
 County Menominee
Edwards
 Filed 193
 J. H. Walker, Com.
 File C. 100

A. B. M.
 H. & W.
 B. B. C.
 T. N. O.
 J. H. Walker, Com.

Filed in Gen. L. Office
 1/29/92