

Send this letter to the land office with F.M.

Paint Rock, Texas,
May 5, 1932.

Hon. J.H. Walker, Com. G.L.O.,
Austin, Texas.

Dear Sir:

The H. & T.C.R.R.Co. Surveys in Block 8,- the E.L.& R.R.Ry.Co. Surveys,- and the G.H. & S.A. R.R. Surveys, all run on a variation of 10:10 East. Hence, in as much as there are no other original corners in that locality that are worth while, I adopted that variation for this work.

I began at the S.W. corner of section No. 127, E.L.&R.R.Ry. Co. and ran East as indicated by arrow, and the arrows show all lines run by me.

There is a costly woven wire fence on the East lines of surveys 132 and 4, which have been accepted as marking the boundaries for many years, however, the East line of 132 is determined by its original N.E. corner which is on the ground.

I found an excess of 10 varas running South from the N.W. corner of 4 to the S.E. corner of no.1 in N line of G.H.&S.A.R.R.Co.6. This I divided between Sur. 4 and 1.

Survey 14 is well located by original corners. I found 5 varas of the excess mentioned above between the two original corners on West line of 14.

In locating Surveys 134 and 6 from the East, I found a strip of 252 varas on the West of Sur. 134 & 167 varas on West side of 6 between these surveys and the high woven wire fence on the East lines of 93 and 7. This line marked by the fence above named was established by decree of the District Court of Tom Green County as the result of a boundary suit between Boyd and Tisdale, and I have it from information that the N.W. corner of 13 and the S.W. corner of 6 were declared by the Court to be a common corner. Hence, I had no hesitancy in extending the West lines of 134 and 6 to take up the vacancy. The same applies to 16 also.

If you desire any further explanations, I shall be glad to serve you.

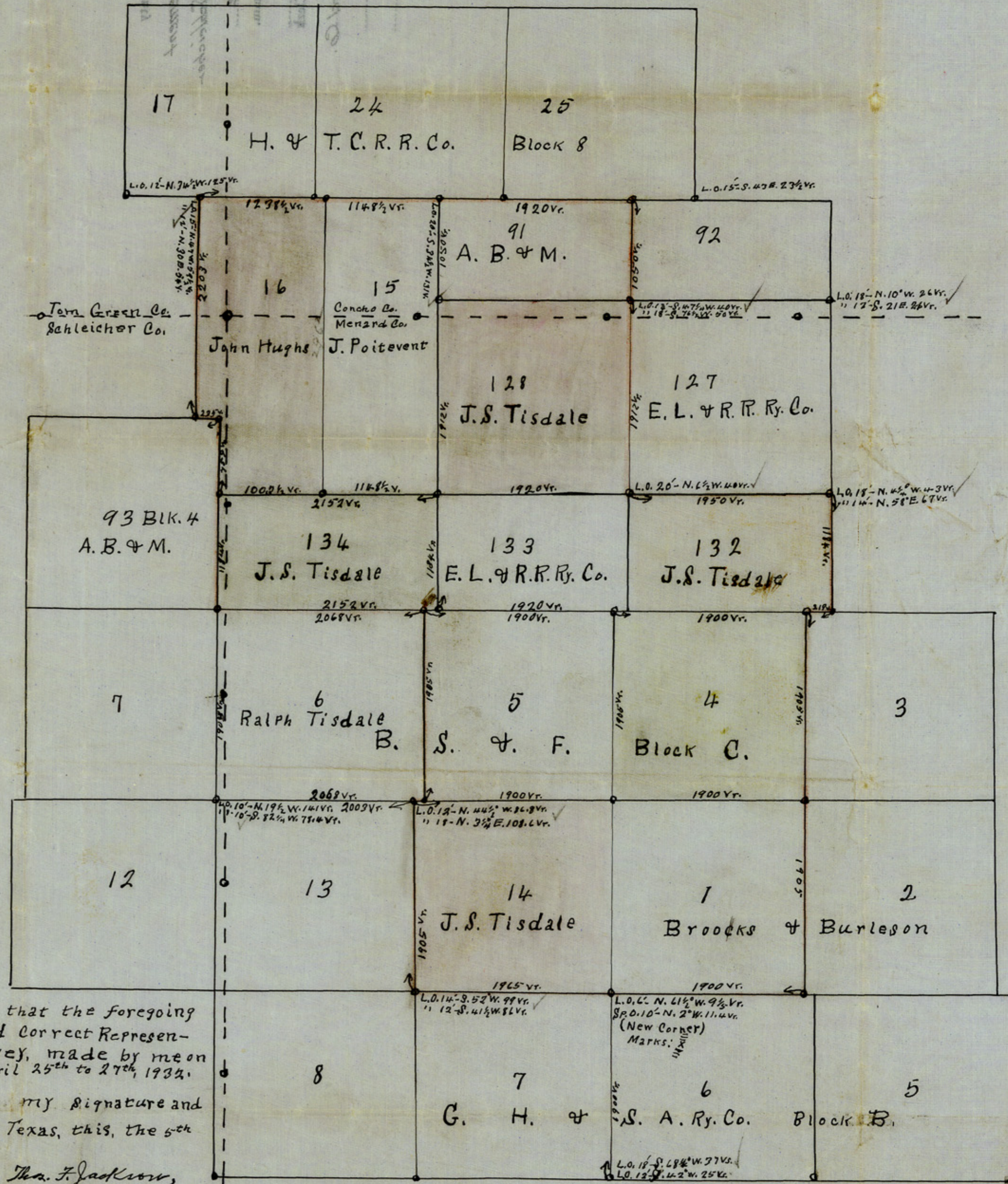
Respectfully submitted,

Thos. F. Jackson

10

Sketch File No. 24
Menard County
T.F. Jackson's St. Statement
Verand Caacha Tom Green Schleicher
 Filed May 26th 1932
 J. H. Walker, Comm.
C. F. Bladen
 Descriptive: AGN. Cor. Menard Co.

J. P. SORRELL LANDS Menard Co. Texas.



I, Do hereby Certify that the foregoing Plat is a true and correct Representation of the Survey, made by me on the Ground on April 25th to 27th, 1932.

I hereunto affix my signature and Seal at Paint Rock, Texas, this, the 5th day of May, 1932.

Thos. F. Jackson,
State Surveyor.

10