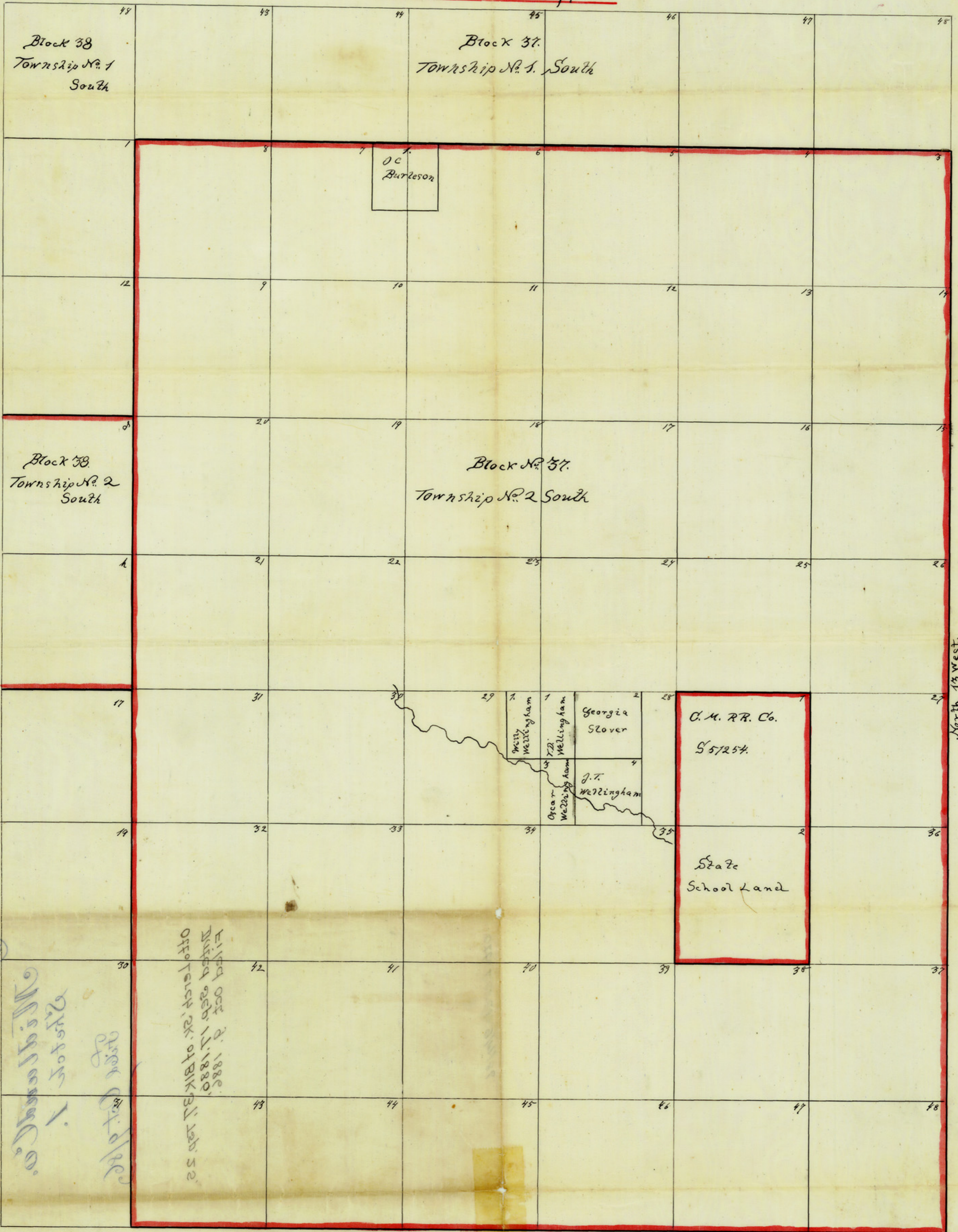


Filed October 9/86
 Det Robinson
 Chief Clerk

Vacant and unappropriated public

No. 1.

Domain
 - in -
MIDLAND County, Tex.



Filed Oct 9, 1886
 Filed Oct 11, 1886
 Office of the Chief Clerk of the Board of Commissioners
 of Midland County, Texas

Course of lines N 13° W
 - - - N 77° E.

variation 12° 45' E.

Scale 950 yards to 1. inch

I also Lerch County surv. of Midland County, Texas
 do hereby certify that the foregoing sketch is a true and
 correct map of surveys made by me on the
 vacant and unappropriated public domain
 situated in Midland County

Midland
 The 11th Day of Septer A.D. 1886.
 O. Lerch
 County surveyor Midland County

COUNTY # 1500