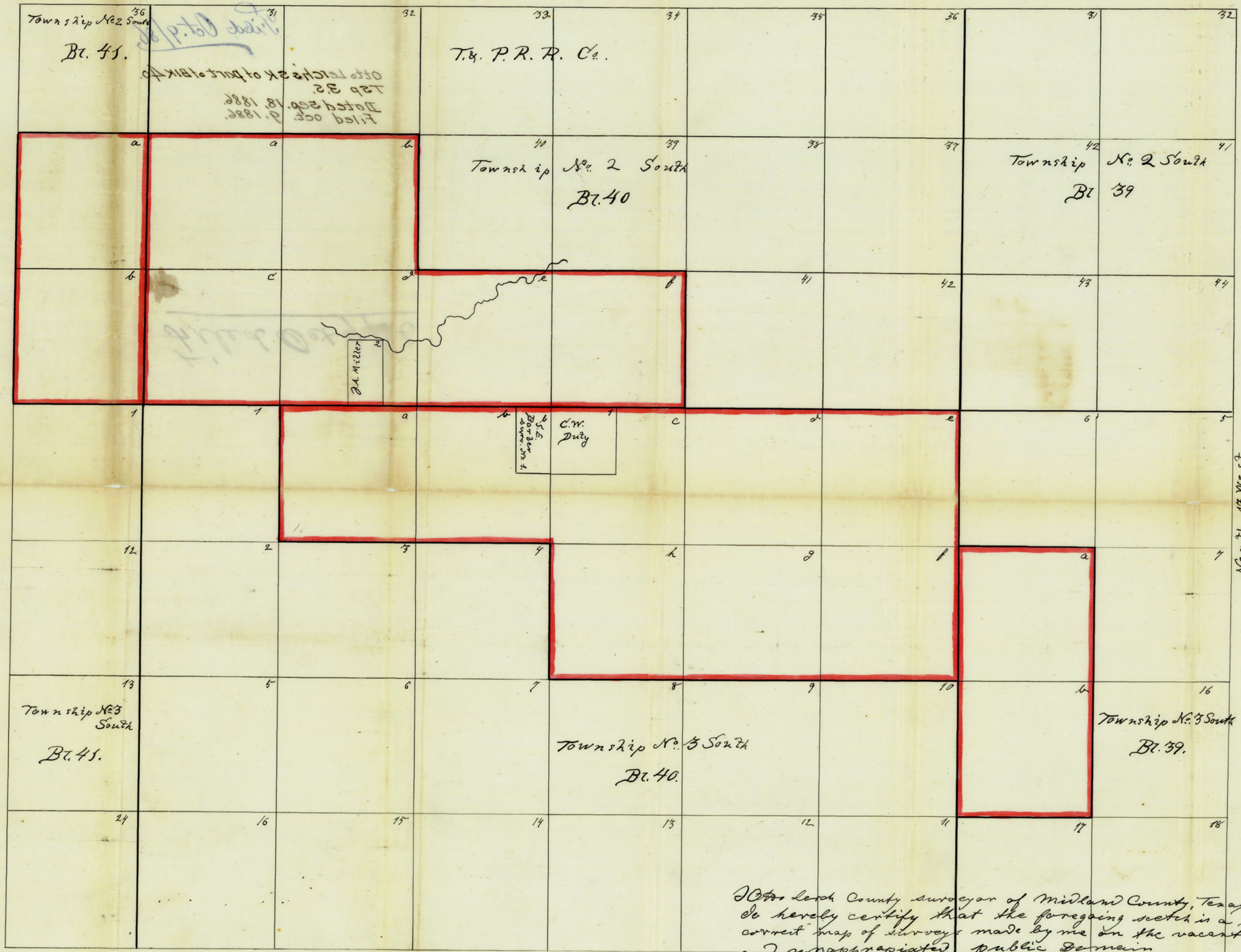


Unappropriated Public Domain  
 - in -  
 MIDLAND County, TEX.

No. 2



Filed October 9/86  
 D. W. Robinson  
 Chief Clerk

Course of Lines N 18 W  
 - - - N 77 E  
 Variation 12° 45' E  
 Scale 950 varas to 1 inch.

I, Otto Lerch County Surveyor of Midland County, Texas  
 do hereby certify that the foregoing sketch is a true and  
 correct map of surveys made by me on the vacant  
 and unappropriated public domain  
 situated in Midland County.  
 Midland the 18<sup>th</sup> day of Sept. A. D. 1886  
 Otto Lerch  
 Co. Surveyor Midland County