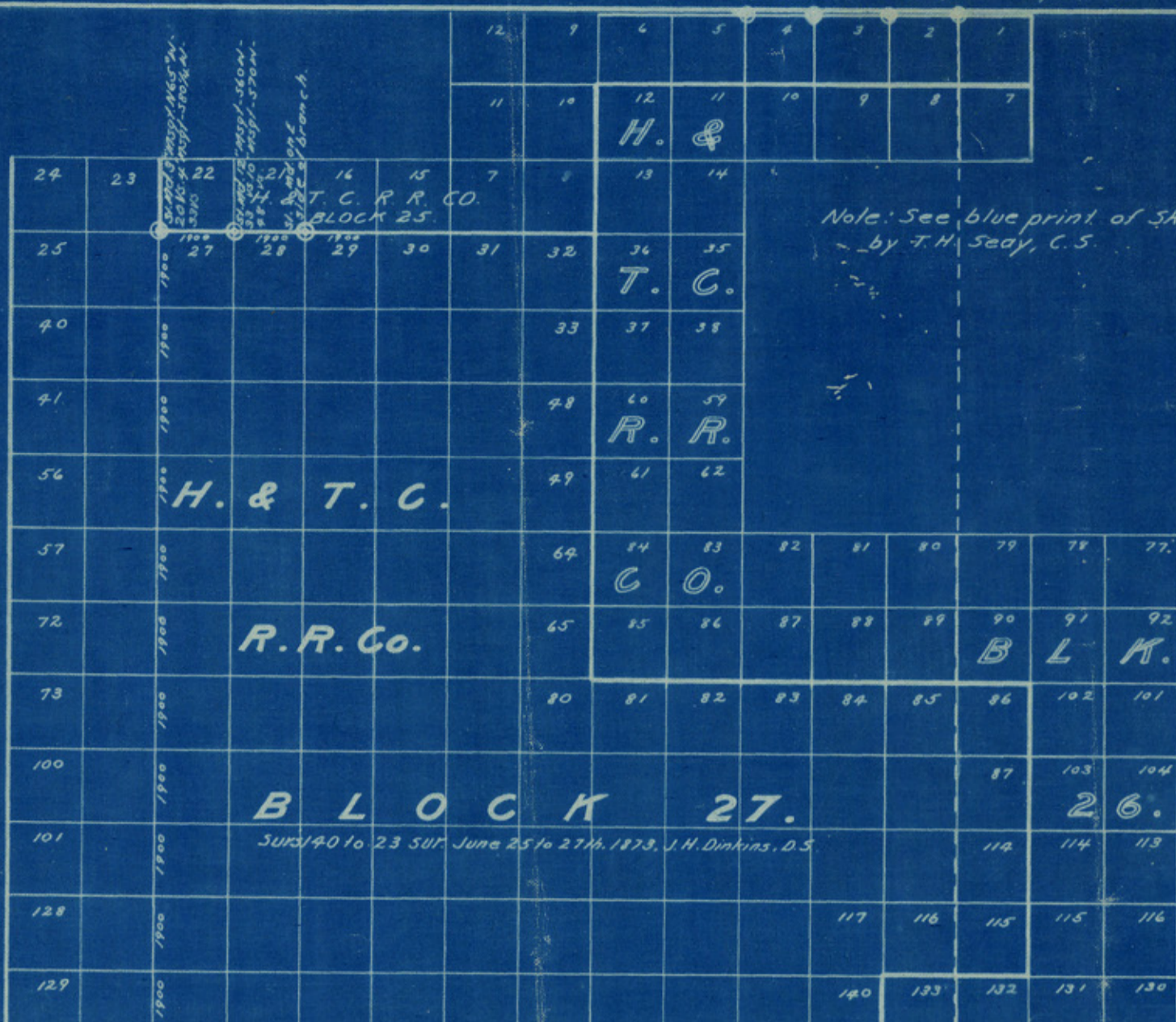


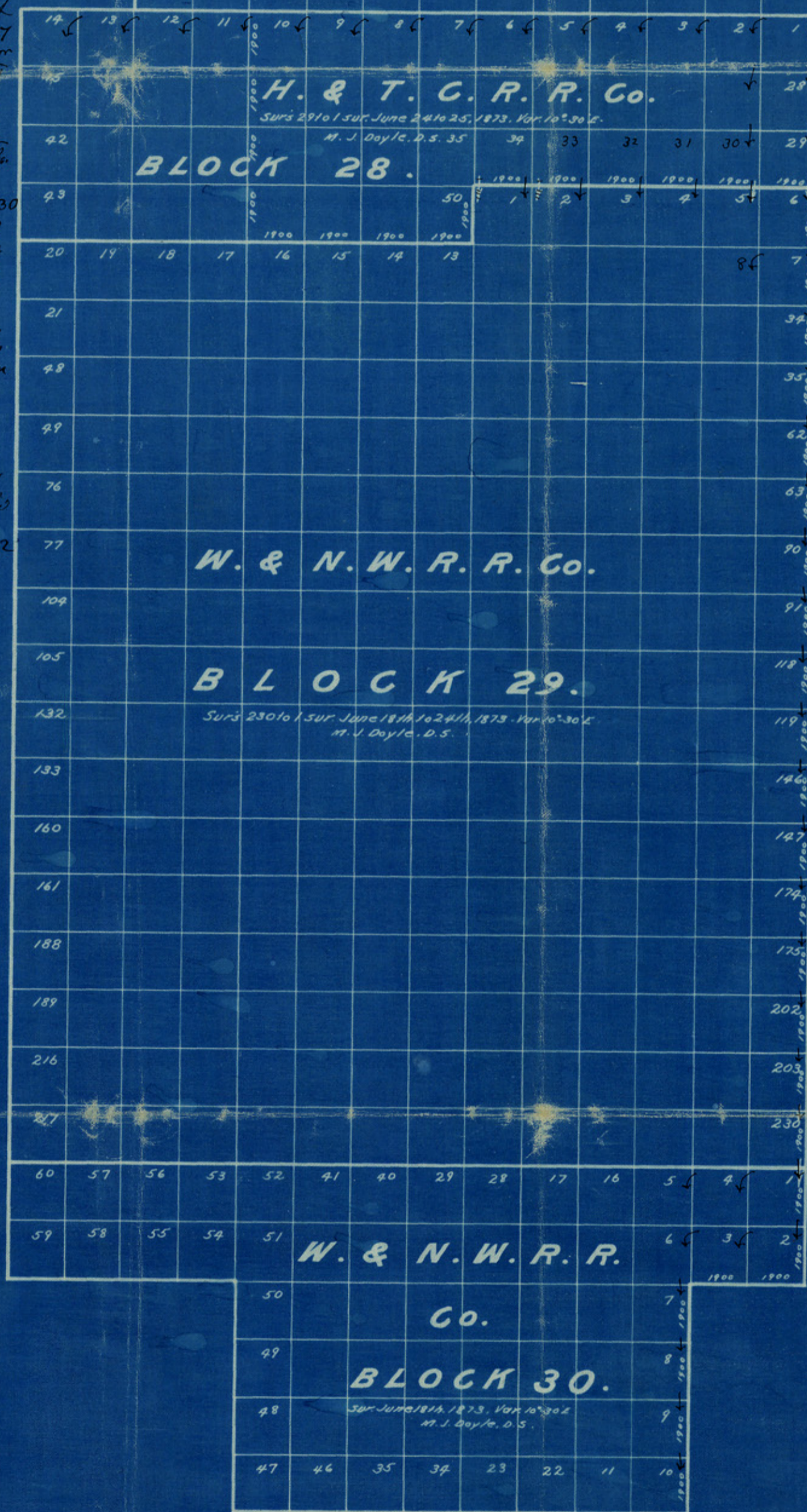
corners identified by T.H. Seay, Co. Sur.



No call in field notes of Surveys in Block 28 for Block 27 on its North, and no other call for Surveys in Block 26, except the beginning call in field notes of Survey No. 1 Block 28 calls to begin at N.W. corner of survey no. 134 Block 26 & T. C. Ryker.

The surveys in Blocks 29 & 30 do not call for any outside or adjacent surveys on the East whatever, simply begin on each other as indicated by an arrow, simply South 1000 yrs. each, corner and distance from N.W. corner of Survey No. 134 in Block 26.

E. van Roubenz
Chief Draftsman
Genl Land Office
Austin Tex Sept 23/1912



SKETCH
COMPILED FROM ORIGINAL FIELD NOTES
GENERAL LAND OFFICE
SEPTEMBER, 1912
SCALE 4000 YS = 1 INCH

X92