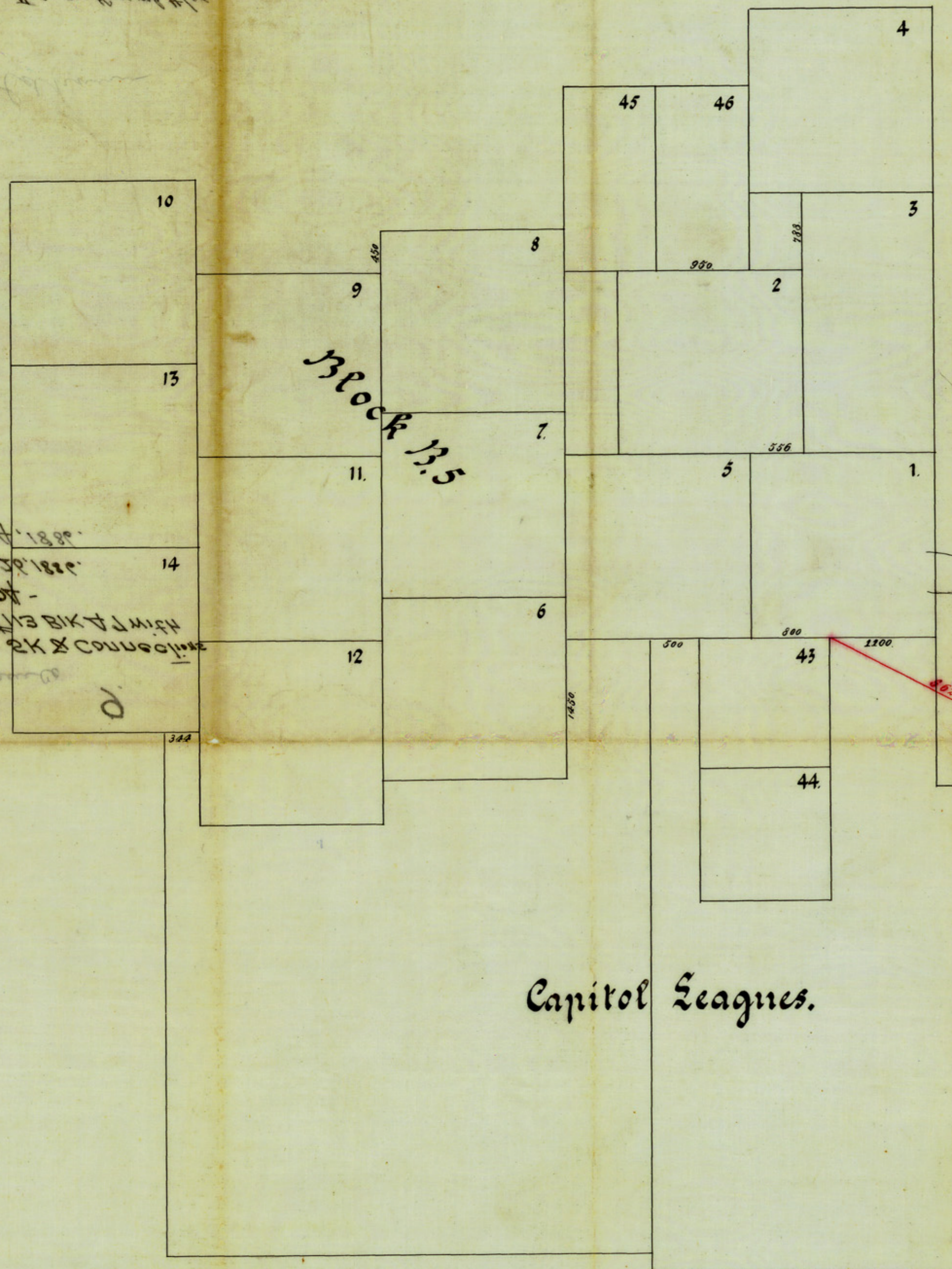
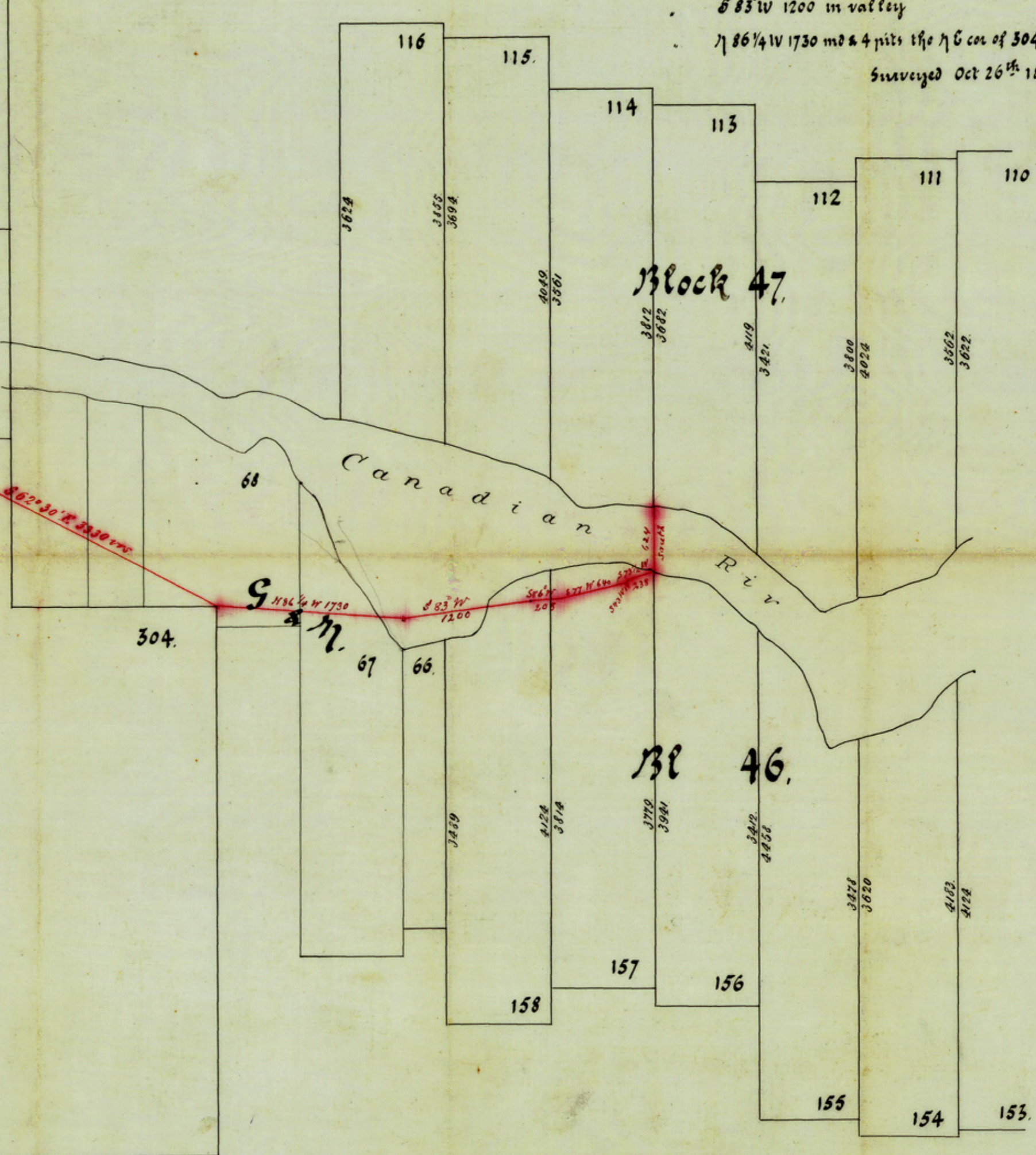


Prof. Geo. W. ...
Surveyor of Oldham Land Dist.

Filed Nov 11 1888
Filed Oct 20 1888
Capitol League
W 2 N 30 E 1/4 Sec 13 T 11 N R 12 W
W 2 N 30 E 1/4 Sec 12 T 11 N R 12 W



Connection by W S Mabey.
 Surveyor of Oldham Land Dist.
 Beginning at the SW cor of 113 Blk 47 N & S C Ry Co.
 Thence S 62° 4' vs. to N W 156 Bl 46.
 S 73 1/2° W 238 vs. st pile on hill.
 S 43° W 18 vs. on top of hill.
 S 77° W 640 on hill.
 S 86° W 208
 S 83° W 1200 in valley
 N 86 1/4° W 1730 md & 4 pits the N E cor of 304
 Surveyed Oct 26th 1886



Capitol Leagues.

Scale 1000 vs = 1 inch.

COMPLET # 18115