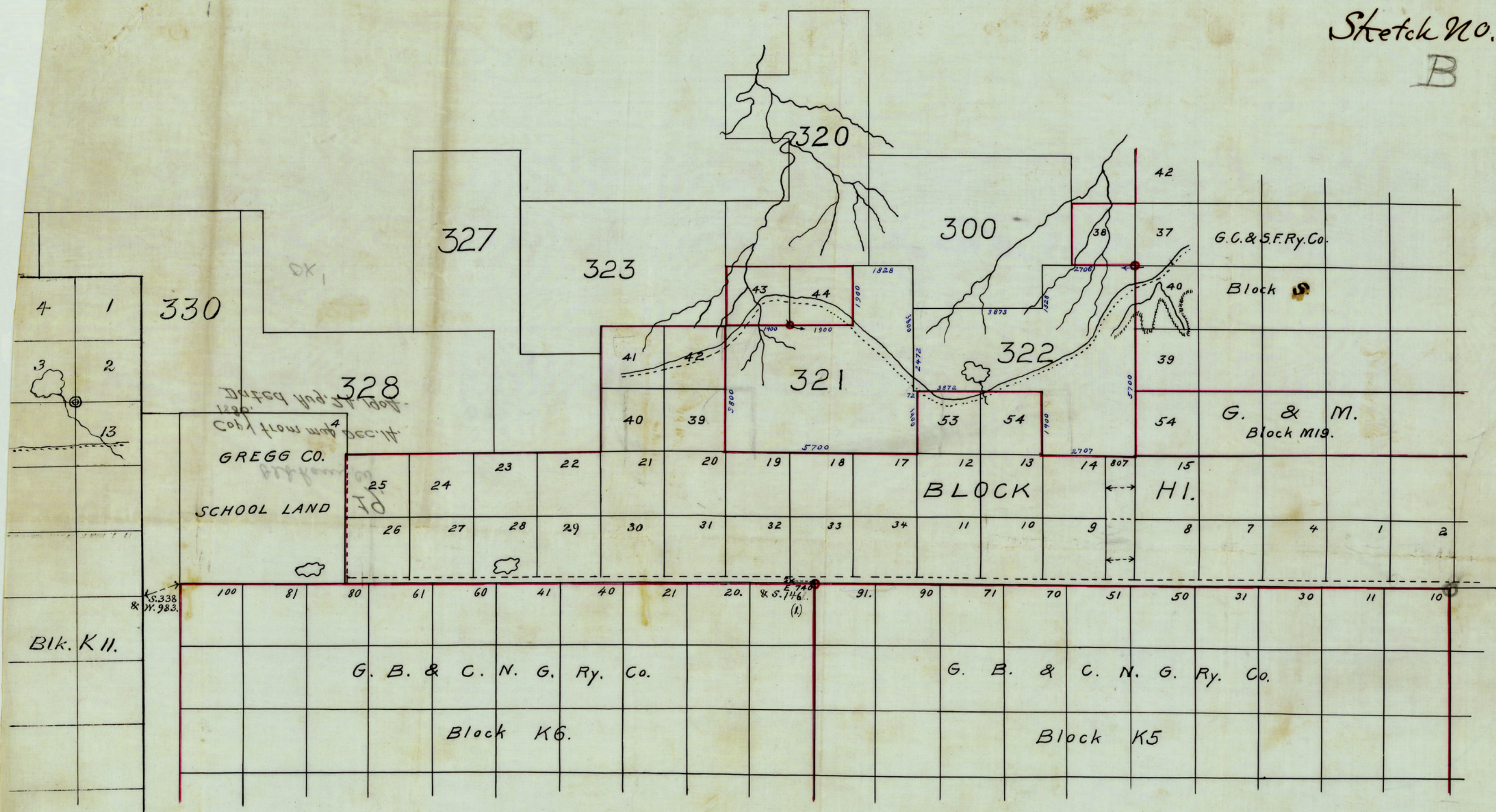


Sketch No. 1.
B



This sketch is a copy from the map returned with the corrected field-notes (as patented) of the Capital Leagues in Oldham County, and filed in this office December 14th, 1886. The figures in blue represent distances as given by patented field-notes.
GENERAL LAND OFFICE, Aug. 24th, 1904.

COPY # 1/1/18

OK