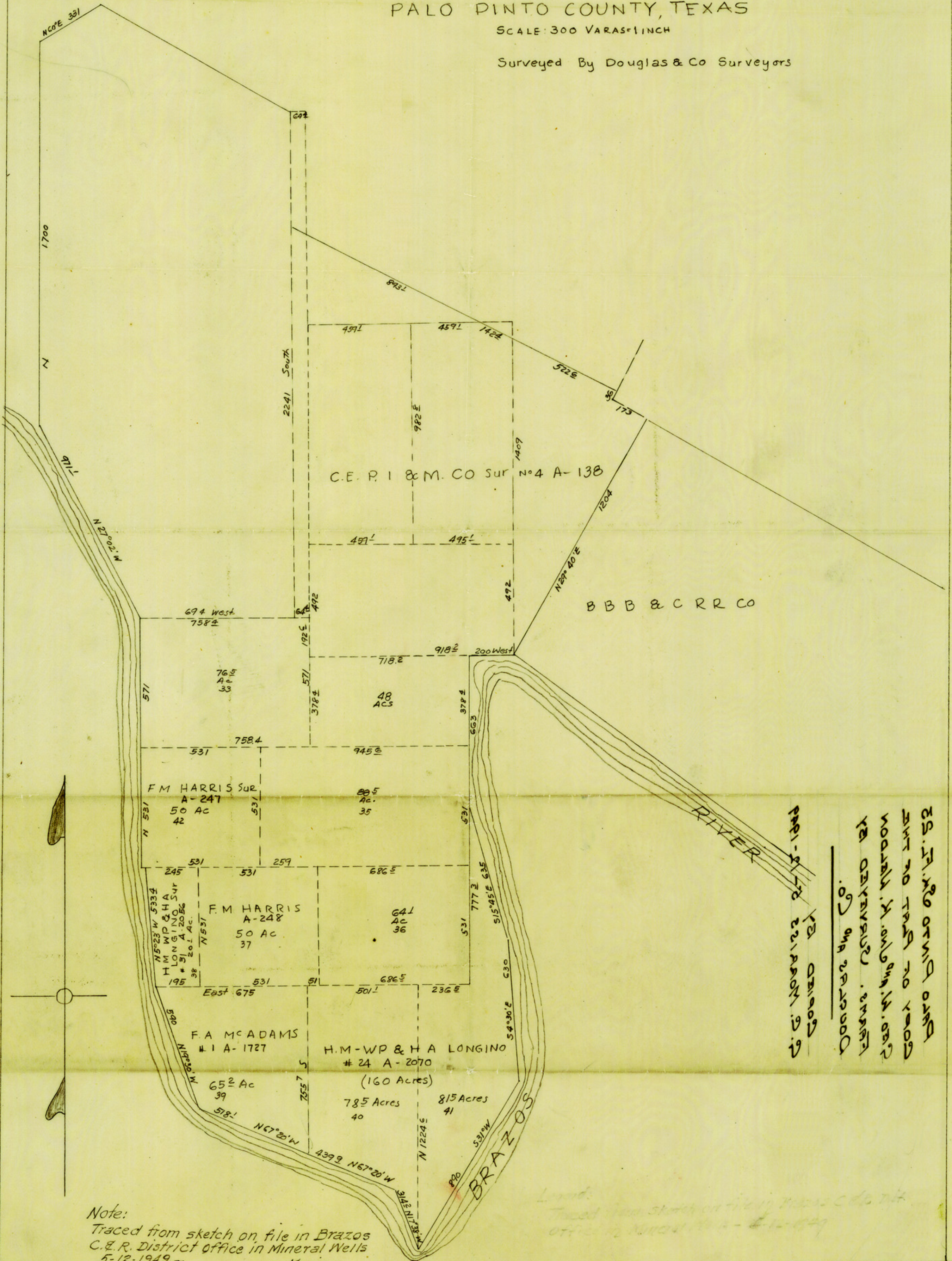


Geo. W. & Jno. K. Weldon FARMS

PALO PINTO COUNTY, TEXAS

SCALE: 300 VARAS = 1 INCH

Surveyed By Douglas & Co Surveyors



23. F. A. McADAMS
 SUR NO 1727
 CO. PALO PINTO
 TEXAS
 1927
 BY
 D. W. WELDON
 SURVEYOR

Note:
 Traced from sketch on file in Brazos
 C. & N.W. District office in Mineral Wells
 5-12-1949. ~ Morris ~

COUNTER # 12132