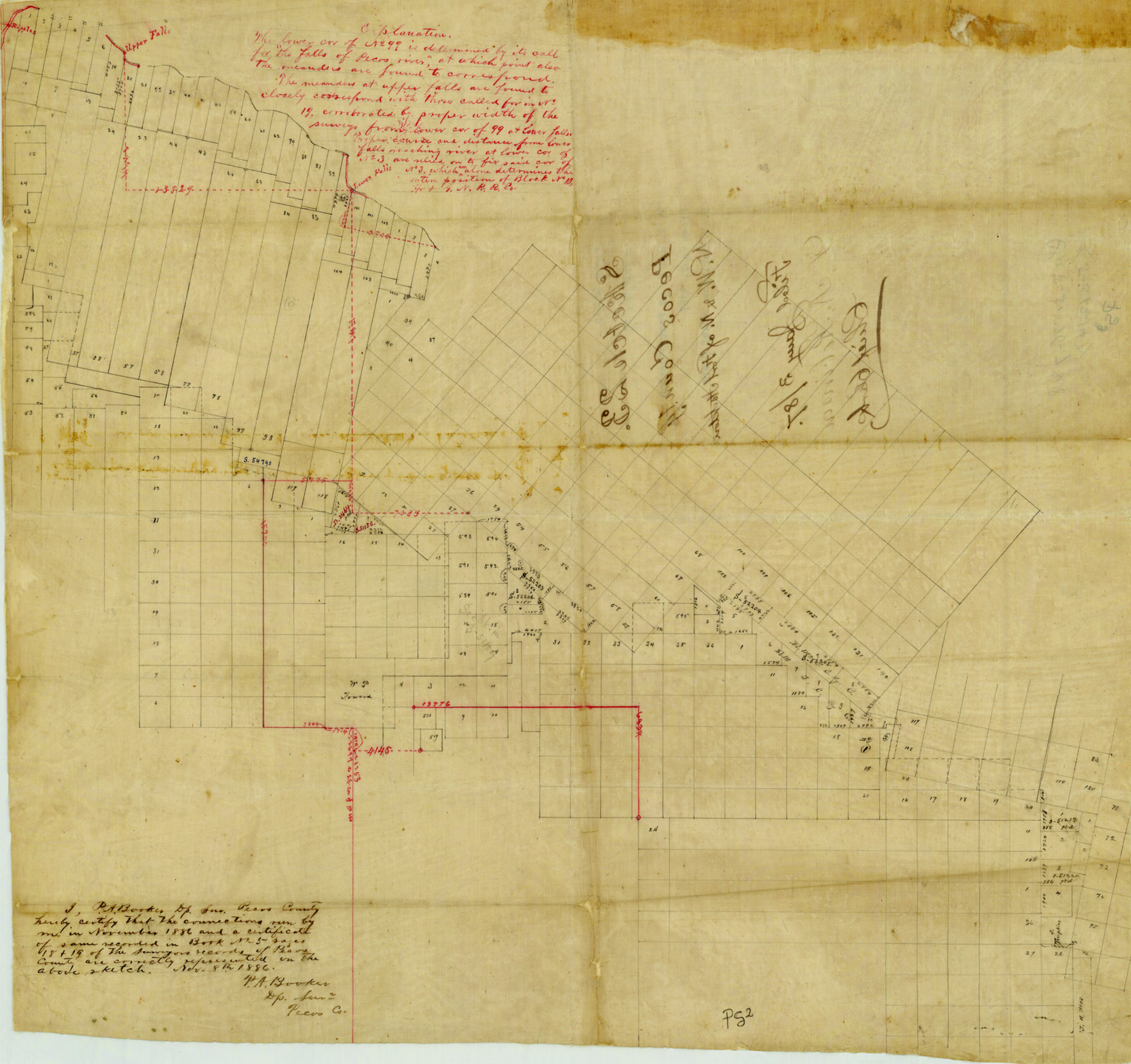


Explanation.
 The lower cor of 1899 is determined by its call for the falls of Pecos river, at which point also the meanders are found to correspond.
 The meanders at upper falls are found to closely correspond with those called for in 1899, corroborated by proper width of the survey, from lower cor of 99 at lower falls. Proper course and distance from lower falls reaching river at lower cor of 1899, are used on to fix said cor of 1899, which alone determines the entire position of Block 1899, 1899, N. R. R. Co.



W. M. & N. of the Pecos River
Pecos County
Upper Falls 2/21
Lower Falls

I, P. A. Booker, Dep. Sur. Pecos County hereby certify that the connections run by me in November 1886 and a certificate of same recorded in Book No. 5 pages 18 & 19 of the Surveyors records of Pecos County are correctly represented in the above sketch. Nov. 8th 1886.
 P. A. Booker
 Dep. Sur.
 Pecos Co.

PS2