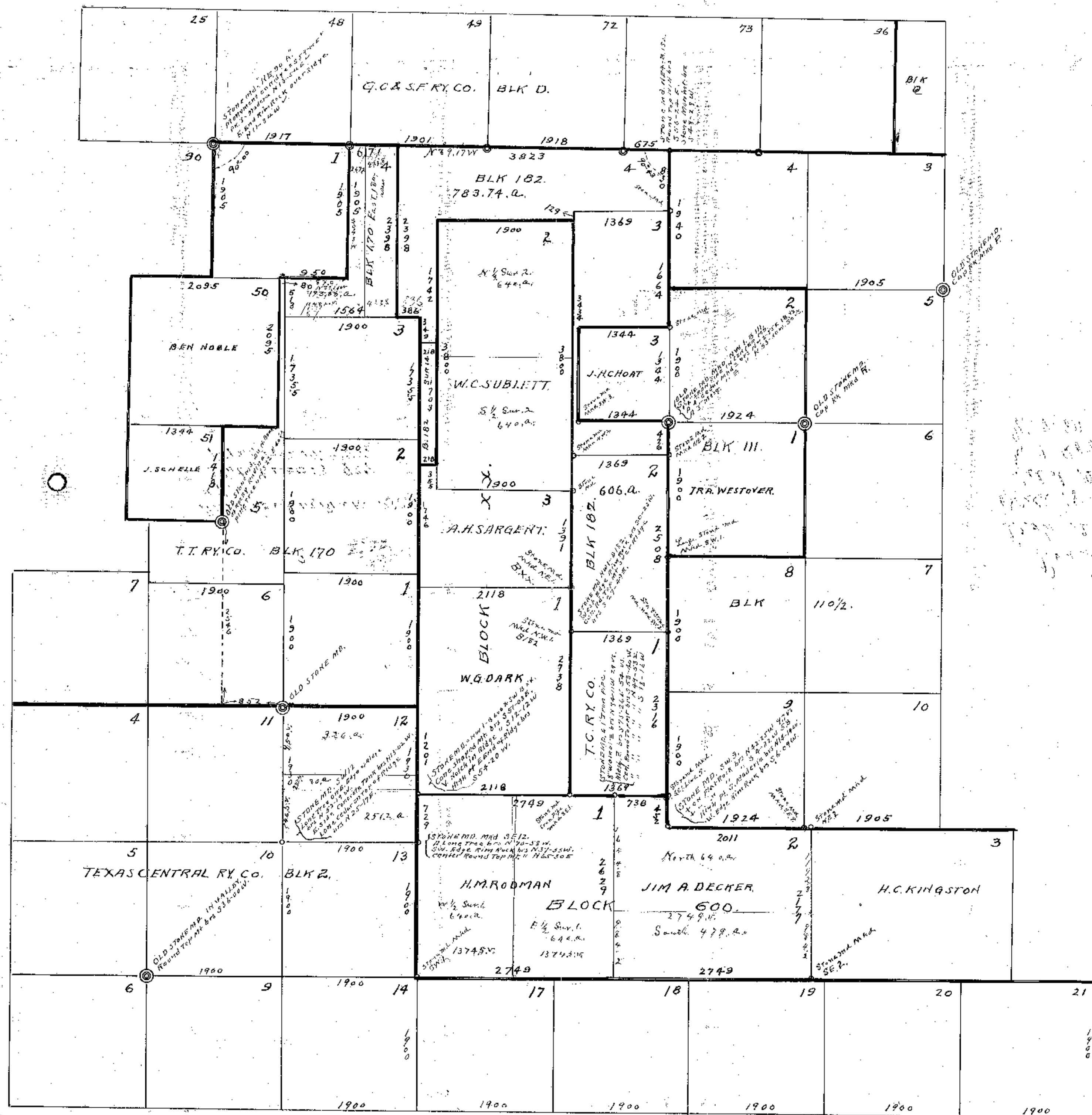


**SKETCH
OF PART OF THE ALLISON-GILBERT RANCH
IN PECOS CO. TEXAS.**

SCALE 1" = 1000 VARAS.



"Certificate"
I, A.N. Lea County Surveyor of Pecos County do hereby certify
That the above plat is true and correct and that all lines,
corners, courses, distances and all marks natural & artificial
are truly & correctly given as found by actual survey on the
ground made by me OCT & NOV 1927.

Fort Stockton Tex. Dec 8-1927.

A.N. Lea
County Surveyor

⊙ Represents original corners.
○ " " " built by R.S. Dod
" " " corners built by A.N. Lea on this survey.