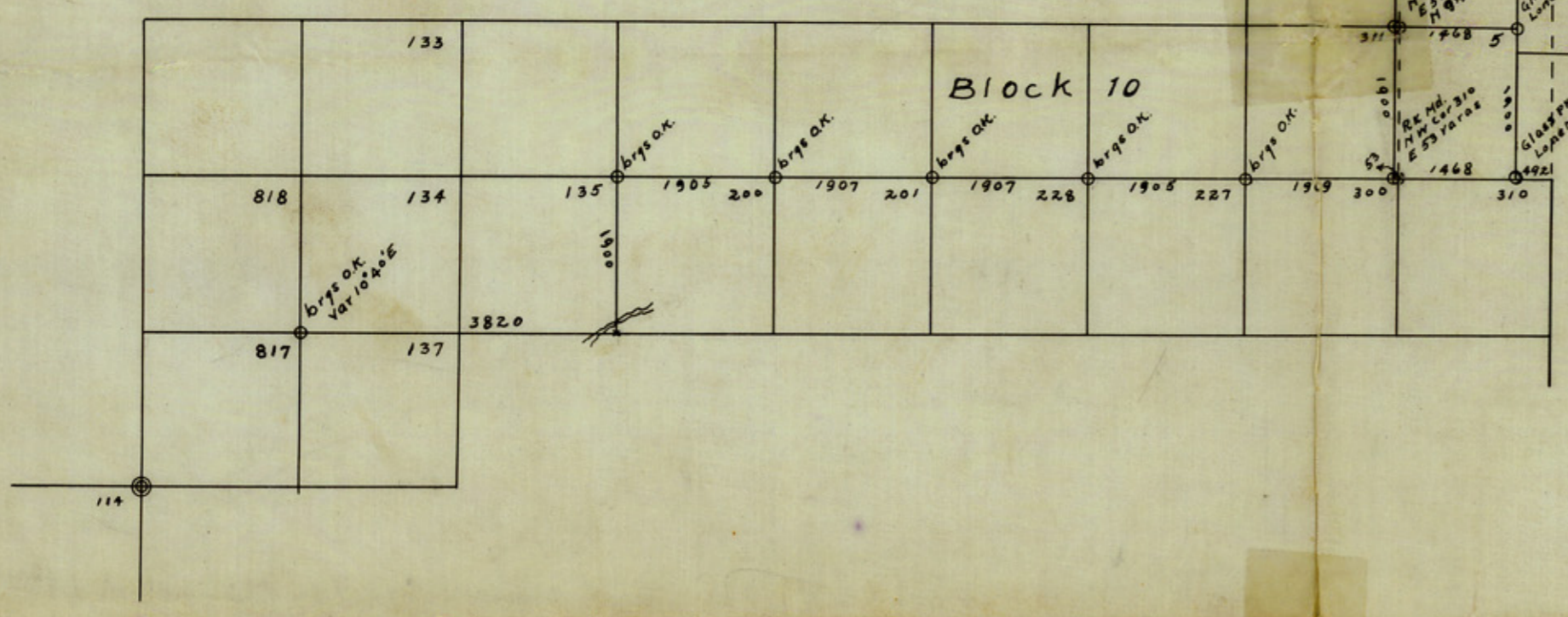
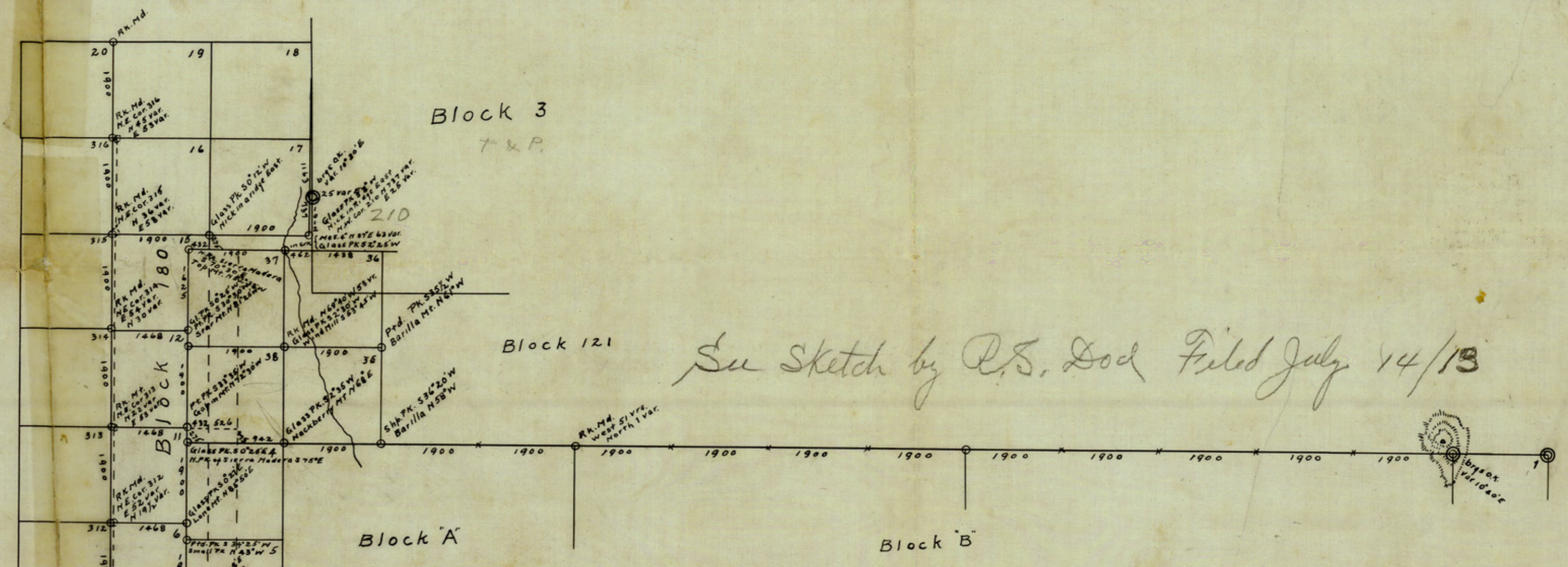


Block 180 T.C.R. Co.
 Pecos Co. Texas
 Survey by R.S. Dod
 1890



NOTE
 The broken line marking the position on the ground
 of the East line of Resurvey of Block 10, was made the
 West line of Block 100, by instruction from the General
 Land office, August 1910.
 R. Dod

SKETCH OF RE-SURVEY
 OF
BLOCK 180 T. C. R. Co.
 PECOS CO. TEXAS

Showing its true position on the ground and
 location of the lines of adjacent
 surveys. From actual survey on the
 ground. Made Aug. - 1910
 R.S. Dod State Surv.

I, R.S. Dod State Surv. do hereby certify that
 the above is a true & correct plat of the surveys
 shown, as found by actual survey on the
 ground, and that all courses, distances & marks
 natural & artificial are truly shown as found
 on that survey made by me. Aug. 1910.
 Alpine Texas
 Aug 24th 1910.

- Original Corners
- Resurvey corners
- Corners This Survey

CORNER # 1810