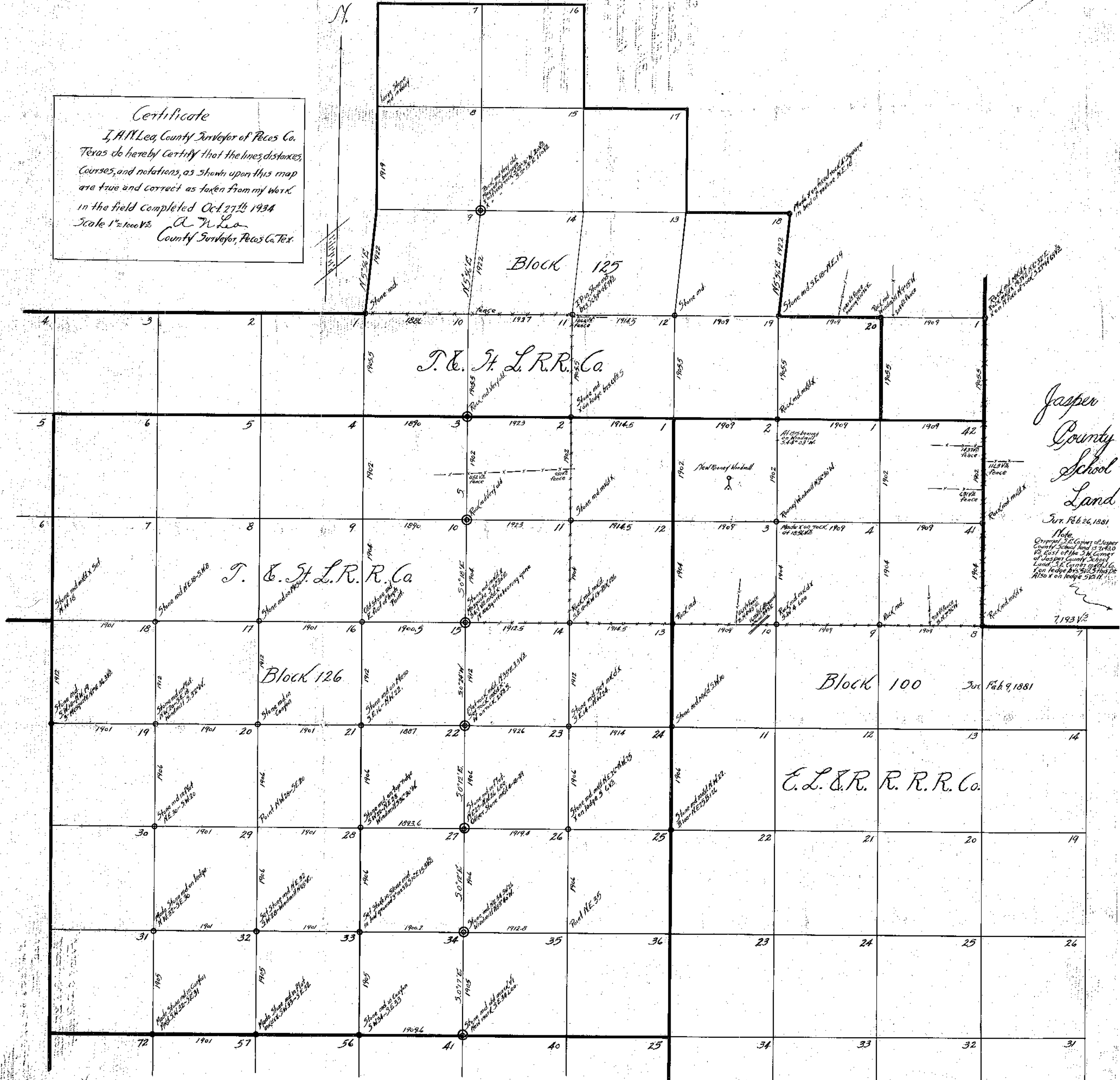


Boyer

Certificate
 I, A. M. Lea, County Surveyor of Pecos Co. Texas do hereby certify that the lines, distances, courses, and notations, as shown upon this map are true and correct as taken from my work in the field completed Oct. 27th 1934
 Scale 1"=1000' A. M. Lea
 County Surveyor, Pecos Co. Tex.



Jasper
 County
 School
 Land
 Jun. Feb 26, 1881
 Note:
 Original S.E. Corner of Jasper
 County School land is 344.0
 ft. east of the S.W. corner
 of Jasper County School
 Land, S.E. Corner of 16
 Section ledge 514.5 ft.
 Also on ledge 514.5 ft.

7.193 1/2
 Jun. Feb 9, 1881