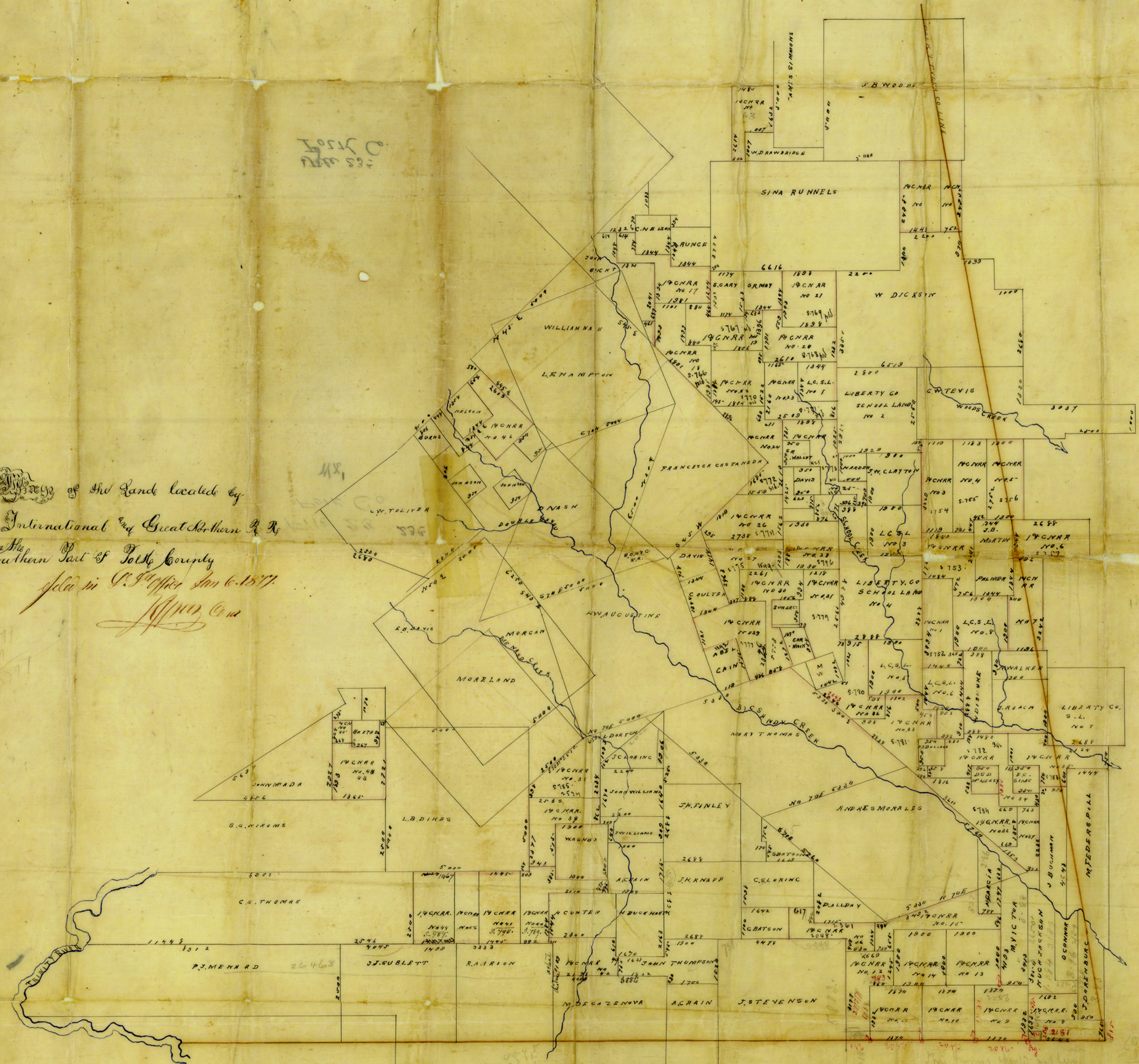


8 910  
1250  
108.00  
11555

1551  
1552  
1553

Sketch of the Land located by  
International and Great Northern R.R.  
in the southern part of Polk County  
sold in P. O. office Jan 6-1877  
L. J. ... Co.



1448  
1550  
1550

1000

1669  
1669

1669  
1669

1669  
1669

W7