

It was received in time.

As Mr. Somersell is now in the West and will not return before Sept - or Octo next, therefore let it rest his return.

You will find in the Within, a Sketch of twelve Sections of land Surveyed last Summer for the Washington Co. R. R. Co. and it will be important for the maps of the County, if Corrected the Surveys last Summer with all the Care possible to have it Wright. The North line of the lower league in the Name of Lejarza or Peter Blanchett was never run East of the S E Corner of S Moensby presumption Survey and in running it to the S E Corner and thence to its S E Corner which was marked at the East End of South line in running S W like all the other line found the Conflict of Ch<sup>e</sup> Dunnum presumption Survey. The S E line of the Cartwright league Survey is over one hundred Vars long, The S W Corner of the P M Maxwell is one hundred Vars to far North, that is the reason the field notes of the Ch<sup>e</sup> Smith 32<sup>d</sup> new Survey Call the distance only 53 Vs when it had to be 169 Vs. but so it is

Respectfully Yours  
John E. Baumgardner

St. J. P. Co.



88231

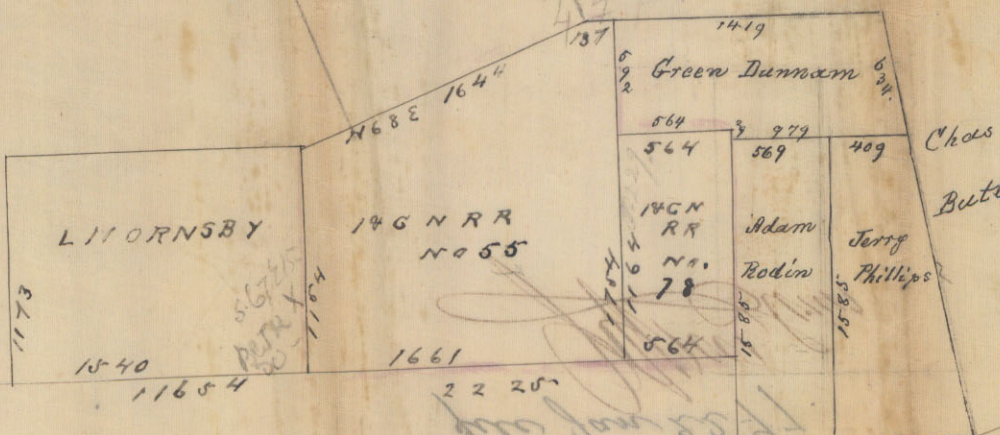
Filed July 22<sup>d</sup> 1863.

Court of Trinity over and  
on the Trinity County line

Trinity County  
file 28



1840  
1661  
564  
2965  
569  
724  
506  
564  
4478



THOMAS CARYWRIGHT

M. WATTS

C. SMITH

JOHN BURGESS

J. Burgess



DAVID WILBURN

JOHN LINDSAY

MAP OF  
INTERNATIONAL &  
GREAT NORTHERN R.R. CO  
SURVEYS  
IN N.W. PART  
OF

P O L K . C O .

727-  
569  
296



Б О Г К С О

ОБ  
ИМ БУД  
ЗАХВАТ  
СЪЕДИ ИОРНЕРИ БЪСО  
ИНТЕРНАЦИОНАЛЪ

МУБ ОЕ

01/1  
2/3/77

File 24  
POLK Co

file Jan 22 77.

*Wm. J. ...*

