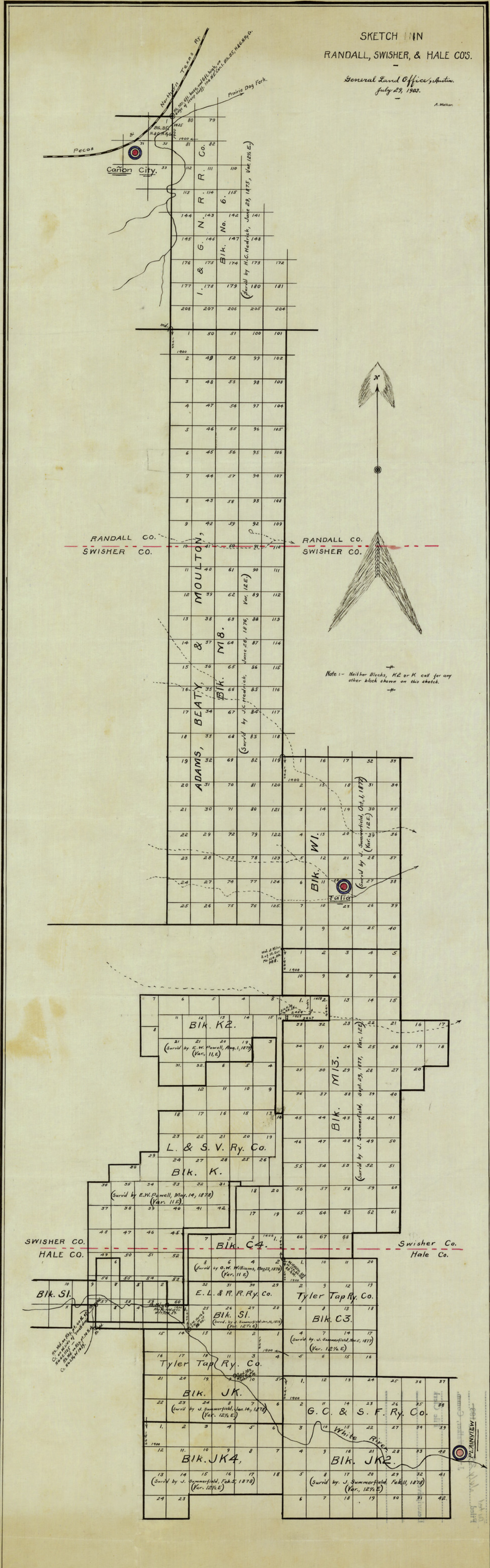


SKETCH IN  
RANDALL, SWISHER, & HALE COS.

General Land Office, Austin,  
July 29, 1903.

A. Mahan



Note: - Neither Blocks, K2 or K call for any other blocks shown on this sketch.

Original Filed in  
Plainsview  
County Clerk  
Elsley Lip No. 4 - 1903