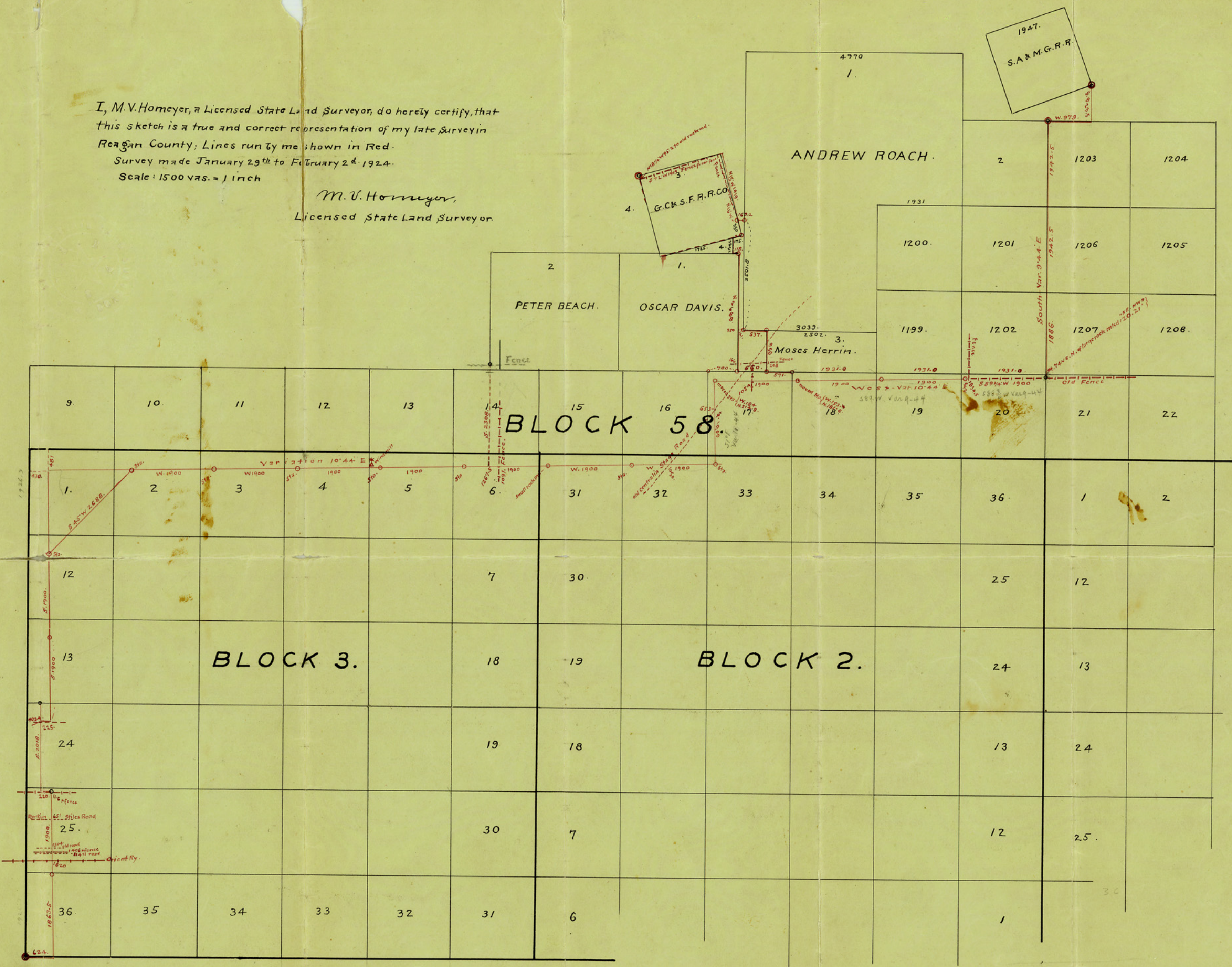


I, M.V. Homeyer, a Licensed State Land Surveyor, do hereby certify, that this sketch is a true and correct representation of my late survey in Reagan County; Lines run by me shown in Red.
 Survey made January 29th to February 2^d 1924.
 Scale: 1500 vas. = 1 inch

M.V. Homeyer,
 Licensed State Land Surveyor.



R₁