

Scale: 1000 VRS = 1 inch

# DUWAIN E. HUGHES' RANCH

REAGAN CO., TEXAS.

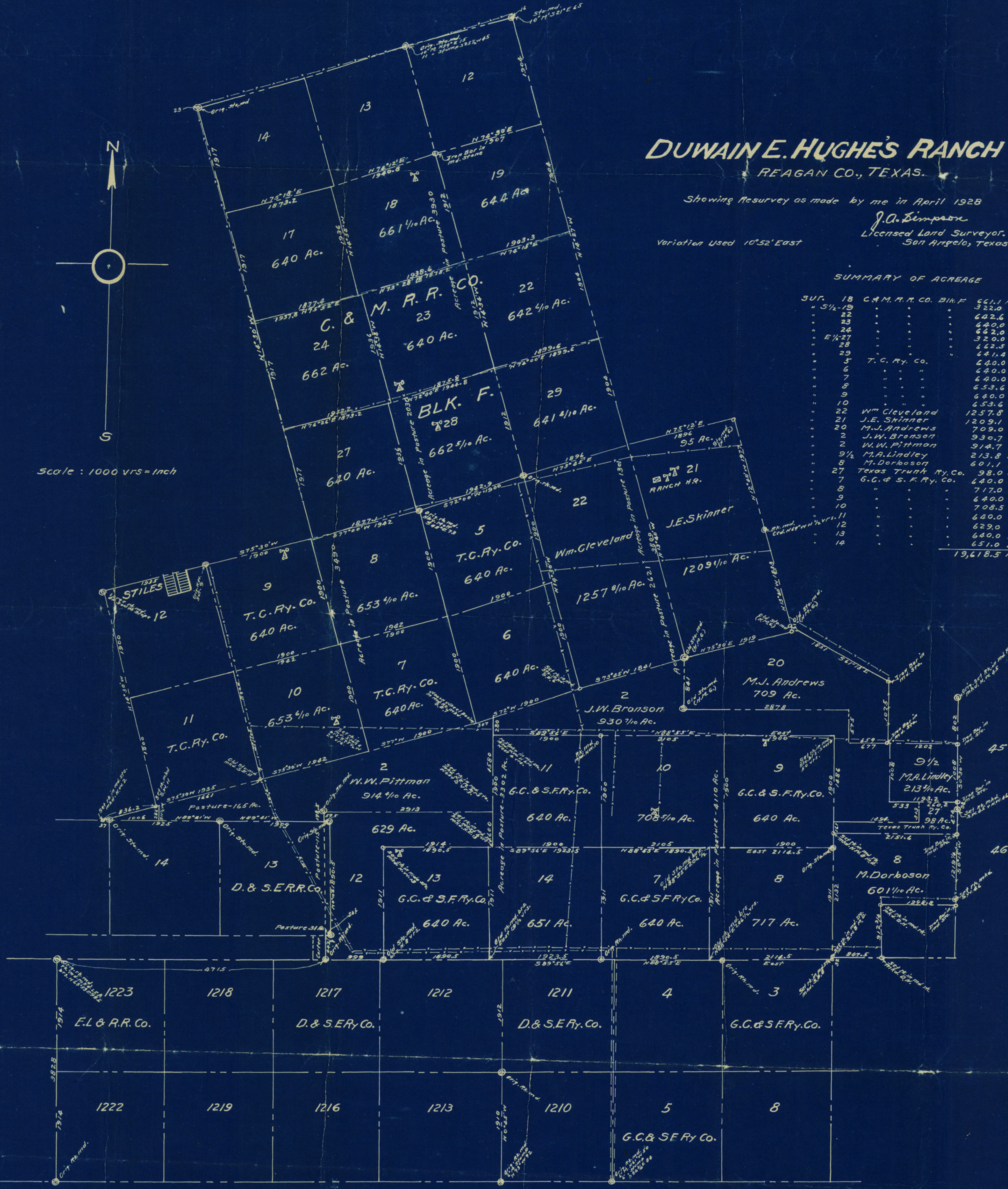
Showing Resurvey as made by me in April 1928

J. A. Simpson  
Licensed Land Surveyor.  
San Angelo, Texas.

Variation Used 10°52' East

### SUMMARY OF ACREAGE

SUR.	18	C. & M. R. R. CO. Blk. F.	641.1 Ac.
"	5 1/2 - 19	"	322.0
"	22	"	642.6
"	23	"	640.0
"	24	"	642.0
"	E 1/4 - 27	"	320.0
"	28	"	642.5
"	29	"	641.4
"	5	T. C. Ry. Co.	640.0
"	6	"	640.0
"	7	"	640.0
"	8	"	653.6
"	9	"	640.0
"	10	"	653.6
"	22	Wm. Cleveland	1257.8
"	21	J.E. Skinner	1209.1
"	20	M.J. Andrews	709.0
"	2	J.W. Bronson	930.7
"	2	W.W. Pittman	914.7
"	9 1/2	M.A. Lindley	213.8
"	8	M. Dorboson	601.1
"	27	Texas Trunk Ry. Co.	98.0
"	7	G.C. & S.F. Ry. Co.	640.0
"	8	"	717.0
"	9	"	640.0
"	10	"	708.5
"	11	"	640.0
"	12	"	629.0
"	13	"	640.0
"	14	"	651.0
			<b>19,618.5 Acres</b>



GC