

# DUWAIN E. HUGHES RANCH

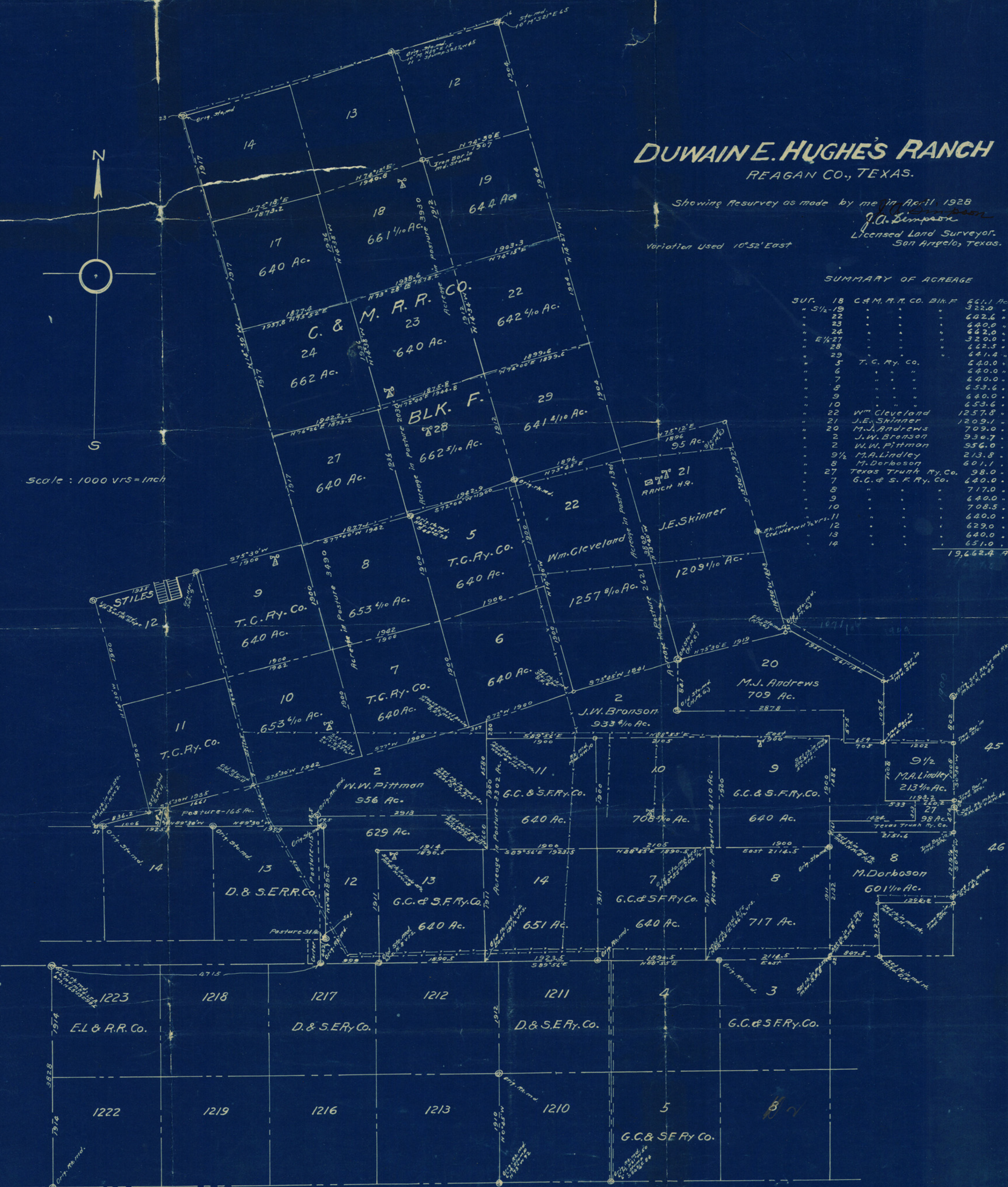
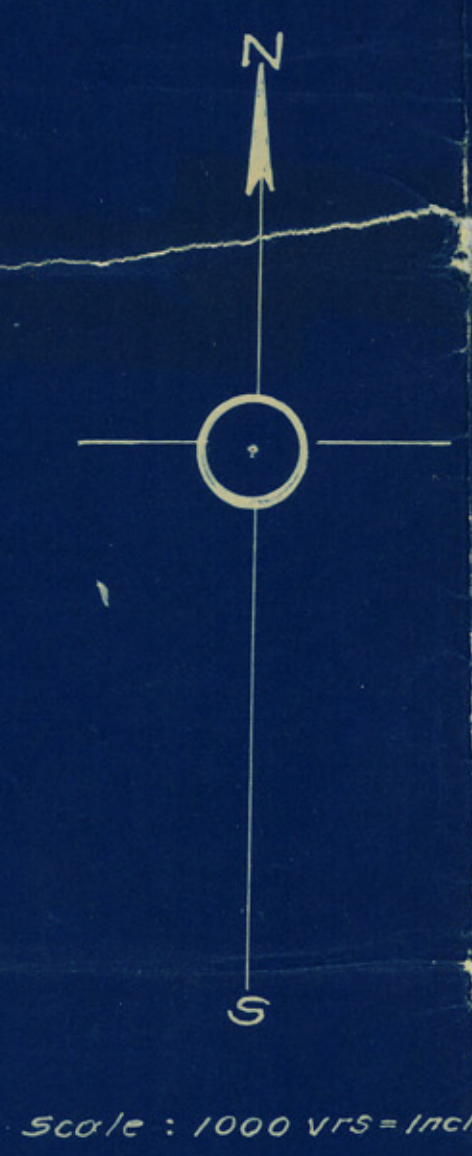
REAGAN CO., TEXAS.

Showing Resurvey as made by me in April 1928  
*J. O. Simpson*  
 Licensed Land Surveyor,  
 San Angelo, Texas.

Variation Used 10°52' East

### SUMMARY OF ACREAGE

SUR.	Acres	Owner	Acres
18	661.1	C. & M. R. Co. Blk. F.	661.1
" 5 1/2-19	322.0	"	322.0
22	642.6	"	642.6
23	640.0	"	640.0
24	642.0	"	642.0
" E 1/4-27	320.0	"	320.0
28	642.5	"	642.5
29	641.4	"	641.4
5	640.0	T. C. Ry. Co.	640.0
6	640.0	"	640.0
7	640.0	"	640.0
8	653.6	"	653.6
9	640.0	"	640.0
10	653.6	"	653.6
20	1257.8	Wm. Cleveland	1257.8
21	1209.1	J.E. Skinner	1209.1
20	709.0	M.J. Andrews	709.0
2	930.7	J.W. Branson	930.7
2	556.0	W.W. Pittman	556.0
9 1/2	213.8	M.A. Lindley	213.8
8	601.1	M. Dorboson	601.1
27	98.0	Texas Trunk Ry. Co.	98.0
7	640.0	G.C. & S.F. Ry. Co.	640.0
8	717.0	"	717.0
9	640.0	"	640.0
10	708.5	"	708.5
12	640.0	"	640.0
13	629.0	"	629.0
13	640.0	"	640.0
14	651.0	"	651.0
			19,662.4 Acres



44