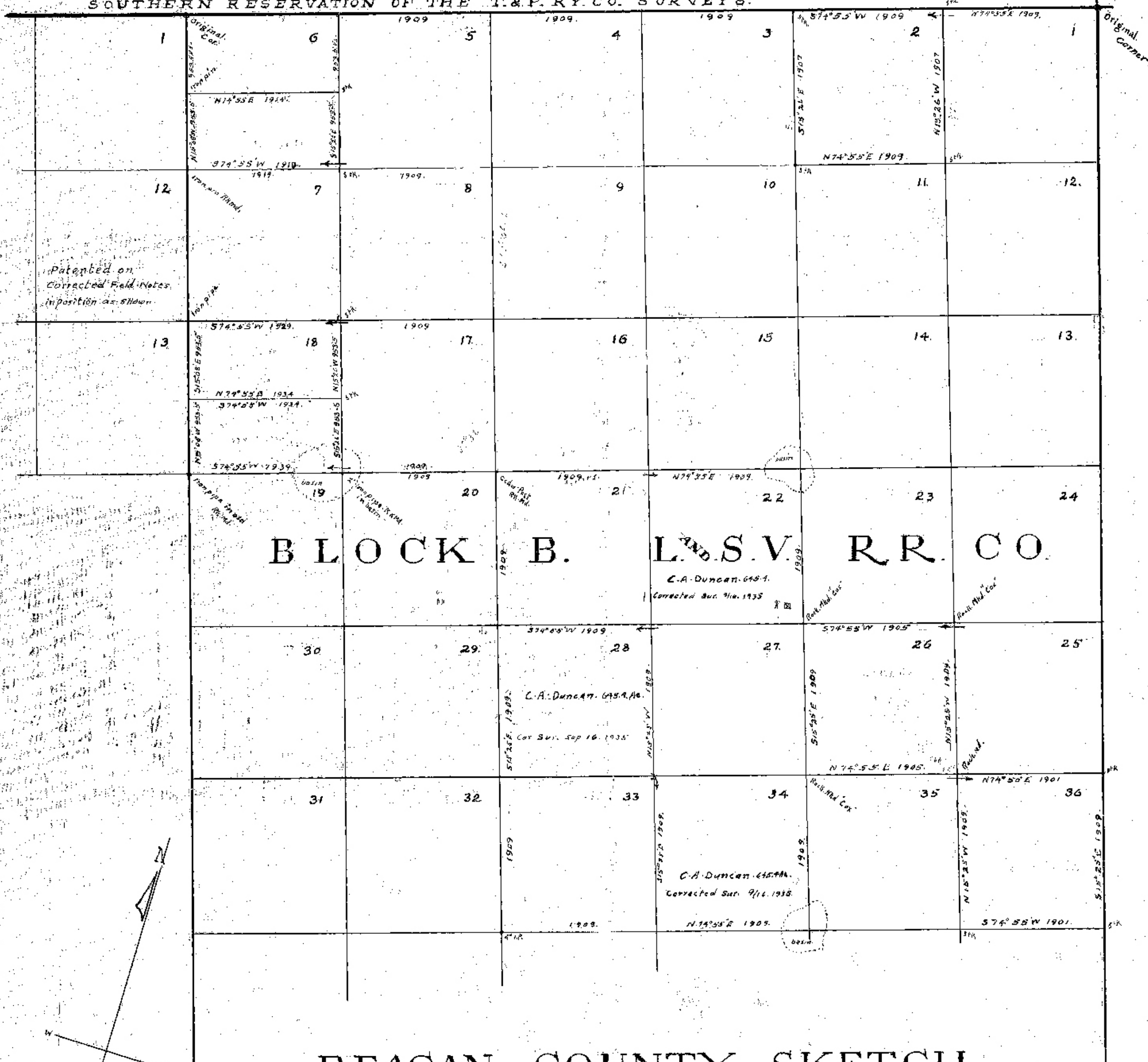


BLK 36. T. 5. S.

SOUTHERN RESERVATION OF THE T. & P. RY. CO. SURVEYS.



REAGAN COUNTY SKETCH

I, Robt E. Estes, Licensed State Land Surveyor of Texas hereby certify that the hereon sketch is true and correct, that the lines, boundaries and corners are truly described and correctly set forth, just as they are on the ground.

This 22nd day of July 1936.

Robt E. Estes,
Licensed Land Surveyor, Midland Texas.

