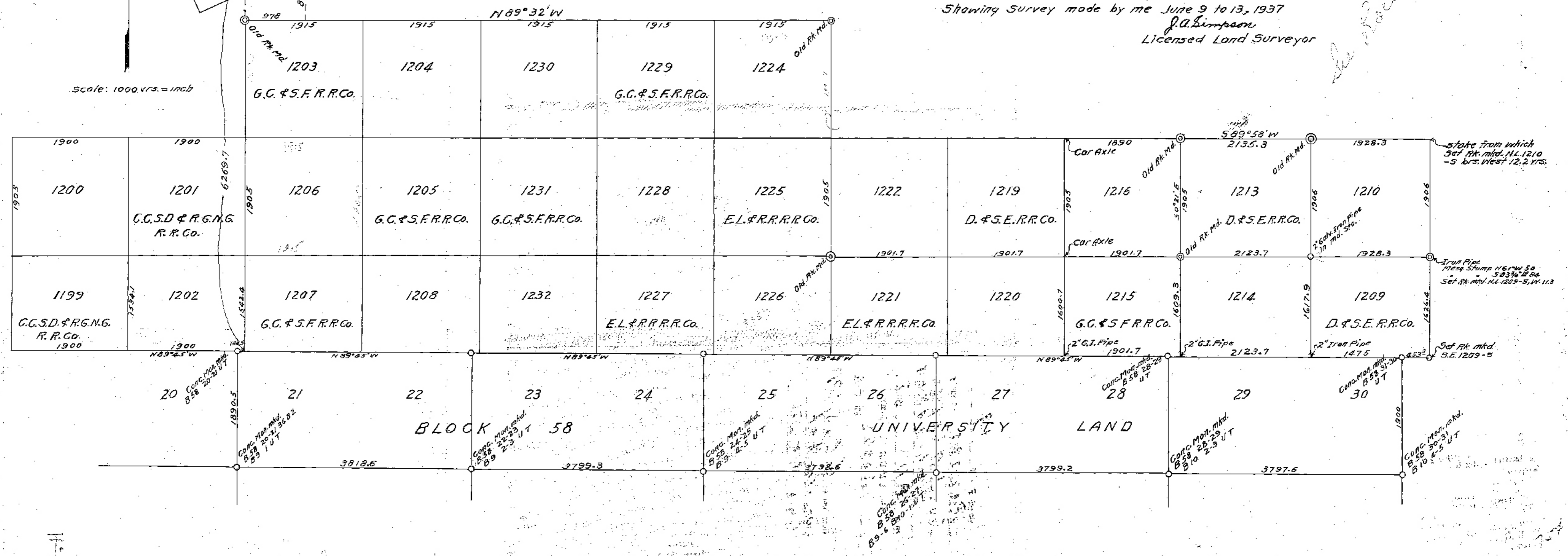


Scale: 1000 vrs. = inch

MAP OF  
Part of Reagan County, Texas.  
Showing Survey made by me June 9 to 13, 1937  
J.A. Simpson  
Licensed Land Surveyor

*See attached 5-11*



Reagan Sk. File # "19"

7598

# TOM GREEN COUNTY

## OFFICIAL DIRECTORY

J. M. W. STOVALL, COUNTY JUDGE  
 LUTHER LYNN, COUNTY ATTORNEY  
 E. E. LOWE, SHERIFF  
 C. W. BARNETT, DISTRICT CLERK  
 R. M. HANKS, TAX ASSESSOR AND COLLECTOR  
 O. M. BENNETT, COUNTY TREASURER  
 J. A. SIMPSON, COUNTY SURVEYOR  
 T. W. PARKER, COUNTY SUPERINTENDENT  
 EMMETT KEATING, COUNTY CLERK  
 R. L. ARMSTRONG, COUNTY AUDITOR



## TERMS OF COUNTY COURT

FIRST MONDAY IN JANUARY, APRIL, JULY AND OCTOBER

## COUNTY COMMISSIONERS

JOE B. BREWER, PRECINCT No. 1  
 P. O. SAN ANGELO  
 PAUL GRAY, PRECINCT No. 2  
 P. O. EGLA  
 JAKE Z. HARPER, PRECINCT No. 3  
 P. O. WATER VALLEY  
 E. E. FOSTER, PRECINCT No. 4  
 P. O. KNICKBOCKER

SAN ANGELO, TEXAS

August 14, 1937.

RECEIVED

AUG 17 1937

General Land Commissioner

Austin, Texas.

REFERRED TO MAP

Dear Sir:-

In reply to your letter of June 28th last with reference to field notes that I made for sections 1202 C.C.S.D. & R.G.N.G.R.R.Co. and 1206 G.C. & S.F.R.R.Co., Reagan County.

You say in your letter that there is a ten vara difference in my tie and that of Mr. Friend's at the S.E. corner of section 1209. You evidently misread Mr. Friend's tie, as he shows on his map the distance from the N.E. corner of section 30 Blk. 58 to the S.E. corner of section 1210 to be 1627.0 varas while I show it to be 1626.4 varas, a difference of only .6 of a vara.

Mr. Friend shows the distance along the South line of section 1210 to be 1890.3 varas while I show it to be 1928.3 varas. This difference is caused by a difference in the location of the S.W. corner of section 1210. Mr. Friend is using a corner that has been on the ground for a number of years but which I have never been able to verify as the original corner from the bearing tree called for in the original field notes. There is an old Rk. mound at the N.W. corner of section 1210 as called for in the original field notes and no other corner to be found in that vicinity. This corner in my opinion is more certain and at the same time gives a more reasonable construction to these surveys.

REAGAN Co. 19  
SK. File

701

counter 35008

# TOM GREEN COUNTY

## OFFICIAL DIRECTORY

JIM W. STOVALL, COUNTY JUDGE  
LUTHER LYNN, COUNTY ATTORNEY  
E. E. LOWE, SHERIFF  
C. W. BARNETT, DISTRICT CLERK  
R. M. HANKS, TAX ASSESSOR AND COLLECTOR  
O. M. BENNETT, COUNTY TREASURER  
J. A. SIMPSON, COUNTY SURVEYOR  
T. W. PARKER, COUNTY SUPERINTENDENT  
EMMETT KEATING, COUNTY CLERK  
R. L. ARMSTRONG, COUNTY AUDITOR



SAN ANGELO, TEXAS

## TERMS OF COUNTY COURT

FIRST MONDAY IN JANUARY, APRIL  
JULY AND OCTOBER

## COUNTY COMMISSIONERS

JOE B. BREWER, PRECINCT No. 1  
P. O. SAN ANGELO  
PAUL GRAY, PRECINCT No. 2  
P. O. EOLA  
JAKE Z. HARPER, PRECINCT No. 3  
P. O. WATER VALLEY  
E. E. FOSTER, PRECINCT No. 4  
P. O. KNICKBOCKER

# 2

I have heretofore made a survey sections 1213, 1214, 1215 and 1216 for the owners of same which conform to the map I enclose.

I have shown on enclosed map my connection from the S.E. corner of survey 1202 to the well identified s.e. corner of survey 1947 S. A. & M.G.R.R.Co., which shows 11.3 varas more distance than does Mr. Friend on his map. This is due to the difference in variation he used on his University work and what I used in my survey. I took my variation from a line run from the S.E. corner of survey 1210 West to the S.W. corner of survey 1222, covering a distance of five miles.

You will note that Mr. Friend's map shows a total distance of 19464.1 varas from the S.E. corner of Survey 1209 to the N.W. corner of survey 20 Blk. 58, where I show a total distance of 19466.6 varas, making a difference of only 2.5 varas. This would discredit Mr. Homeyer excess of 63 varas from the N.W. corner of survey 1203 to the N.E. corner of survey 1224, and shown by me to be 75 varas.

The late work that I have done in this area has been done very accurately, with good chainmen, transit line of hubs and double centering on every line to eliminate any error in transit line.

Very truly yours

*J. A. Simpson*

Licensed Land Surveyor

P. 2

counter 35009

June 28, 1937

Mr. J. A. Simpson  
San Angelo, Texas

Dear Mr. Simpson:

We have received your map of a portion of Reagan County, and corrected field notes on Sections 1206 and 1202. We have given this Section some study and in view of the fact that it does not entirely agree with some of the other work on file here, we are asking for a little more information.

Since you tie into Block 58 of the University lands and seem to tie to the same corner as found by Mr. Friend in his work, I am sending you a photostat of his work and findings in this vicinity for comparison and checking.

You will note a ten vara difference in your tie and his at the Southeast corner of 1209. He also found the South line of Section 1210 to be 1890.3. There also seems to be more excess North and South according to his surveys and his tie to the Centralia Survey than shown by you.

Mr. Homeyer, in a survey made a few years ago, found between the Northwest corner of 1203 and the N Northeast corner of 1204, 63 varas excess, and you indicate 75 varas excess. Please show your tie in connection with the rock mound at the East corner of the Centralia Survey No. 1947. We are returning herewith your sketch and field notes and will ask that you return them to us after giving this other sketch some study. Please furnish us with a statement regarding these surveys as made by you.

Sincerely Yours

JLL/LM

Commissioner.

P.S. We have again checked the field notes on Section 3064, Block 28, Irion County, they do close and have been filed.

978  
136  
1132

F.3 counter 35010

see Sk-19