

REAGAN COUNTY

A SURVEY BY H.L. GEORGE
207 CENTRAL NATL. BANK BLDG.
SAN ANGELO, TEXAS

SCALE — 1" = 400 VARAS

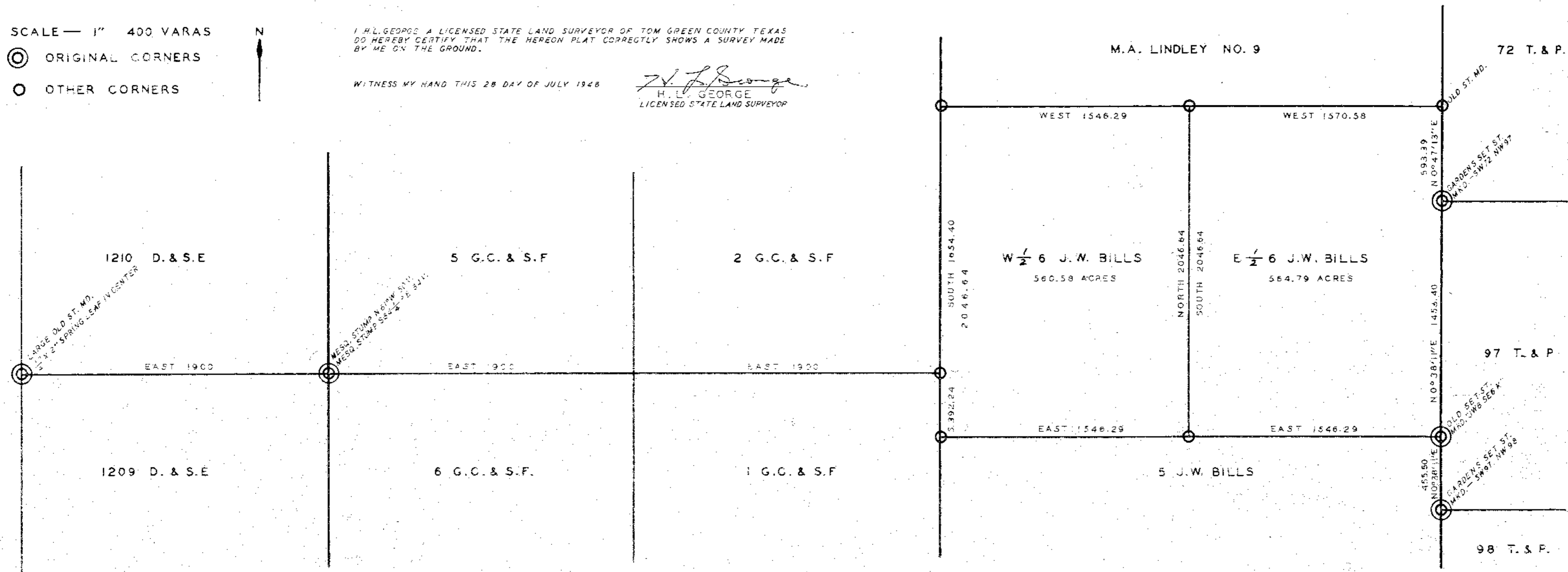
- ⊙ ORIGINAL CORNERS
- OTHER CORNERS



I, H.L. GEORGE, A LICENSED STATE LAND SURVEYOR OF TOM GREEN COUNTY, TEXAS, DO HEREBY CERTIFY THAT THE HEREON PLAT CORRECTLY SHOWS A SURVEY MADE BY ME ON THE GROUND.

WITNESS MY HAND THIS 28 DAY OF JULY 1948

H.L. George
H.L. GEORGE
LICENSED STATE LAND SURVEYOR



10-16