

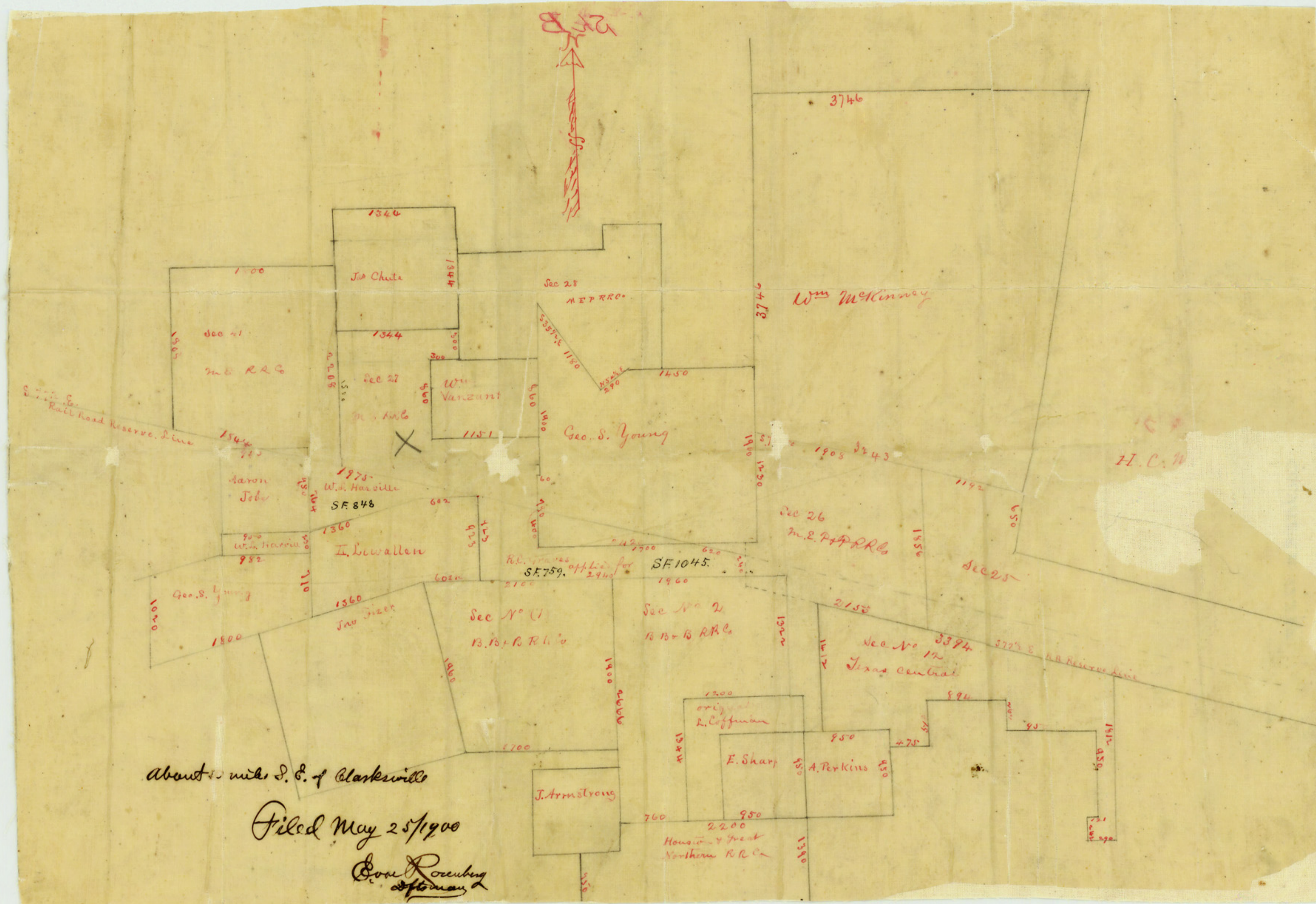


1-567- R. H. WELLS, COUNTY JUDGE, CLARKSVILLE, TEXAS, 5-23-1900.

Hon. Charles Rogan, Com. Gen. Land Office, Austin Tex.

Dear Sir-

You will please find herewith in closed sketch of a section of lands situated in Red River County about 9 miles S & 30 E from Clarksville made by actual surveys upon the ground. This section has been in a great tangle of late years, to the annoyance of land owners as well as the surveyor. In the 1st instance the E. Sharp Preemption survey has been reported by former surveyors as being disconnected from the A. Perkins survey which is an error. There exists no space between said surveys. The H. & N. R.R. Co. 640-acre tract N.E. corner. Corners with the S.W. corner of A. Perkins and runs west as shown in the diagram. Hence you will see that the m. B. McConnick cannot embrace the vacant strip on the N. of Perkins + Sharp.



about 10 miles S. E. of Clarksville

Filed May 25/1900

Geo. Rogan, Surveyor



1632 R. H. WELLS, COUNTY JUDGE, CLARKSVILLE, TEXAS, 189

The Geo. S. Young + Vanant, J. Chute + Wm. McKinney surveys are old surveys and well established. Starting from the S.W. corner of J. Chute, the starting point of Sec 27, N.E. R.R. Co. running south 1000.00 as per the said survey. Thence S 77° E to the Rail Road reserve line will strike the Young m. B. line 100.00 N. of the S.W. corner of said Young, as shown in sketch. again the Wm. Vanant closes up on the m. B. line of said Young. evidently Sec 27 was an office survey equally as erroneous as the Sharp + McConnick as formerly reported. you will observe the location of the R.R. Reserve line based upon the surveys south and those on the N. of said line will not meet starting from opposite directions and verging together near the S.E. corner of the Young. I send you this statement hoping it will be of some benefit in getting us out of this tangle and showing you the location of the scrap land applied for in this section of County.

Respectfully, R. C. Graves, Dpty. Co. Surveyor

Sketch File "A"
Red River County
Sketch & Letter of explanation, of Section of County about 10 mi. SE of Clarksville. On Cuthand Cr. & Reserve line
Dated 5-23-1900
Filed 5-25-1900