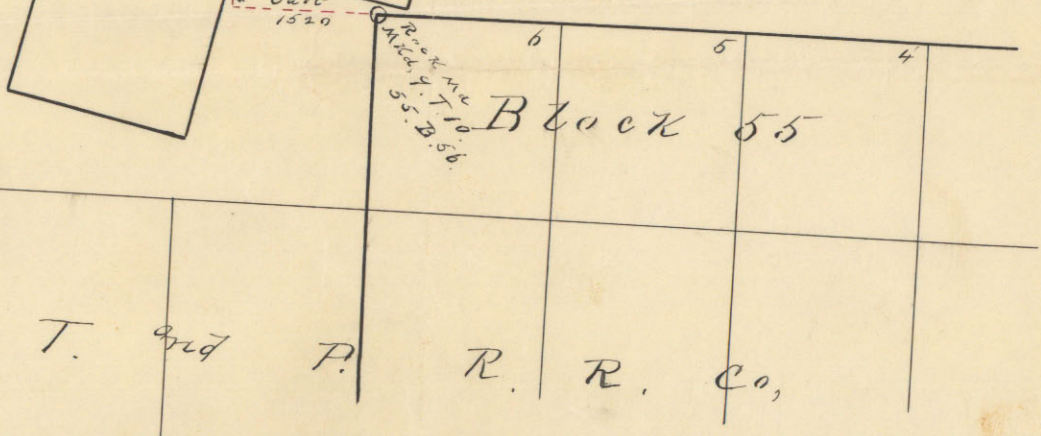
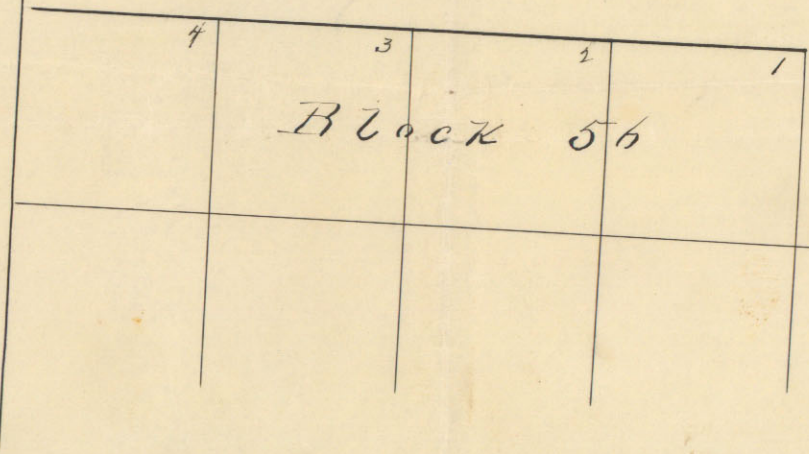
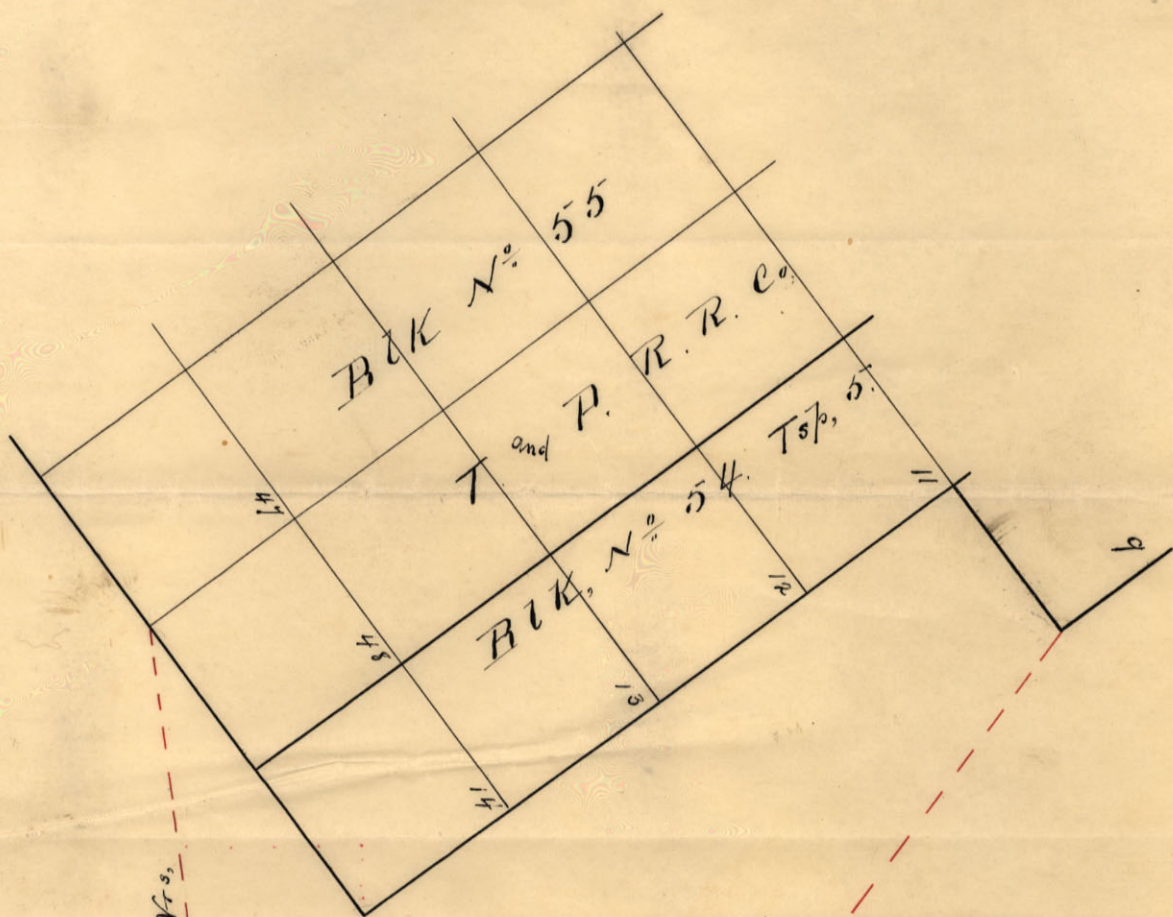


Rock mound
M. 56, D. 57.
7. T. 8.

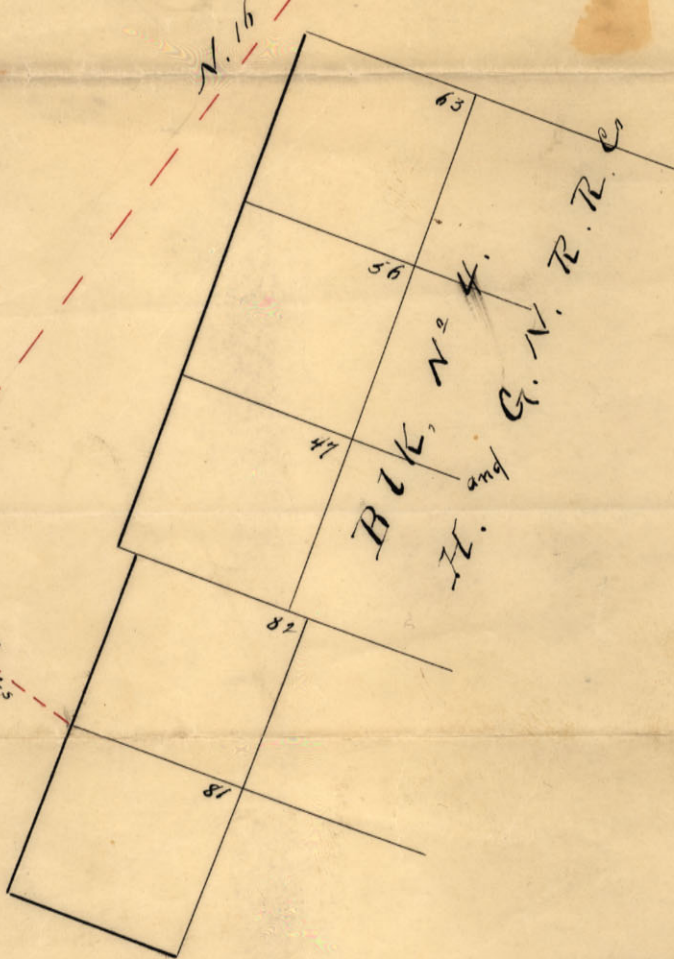




N. 61° 20' W. 11,000 Yds.

N. 16° 30' W.

N. 73° E. 2337 Yds



100

The State of Texas

Reeves County

Field Notes of a

survey made by order of the County Commissioners Court of Reeves County Texas.

Said survey is a line connecting Block N^o 4 N. and G. N. Ry. lands with Block N^o 55 Twp N^o 5 T. and P. Ry. Co's lands Beginning at an iron pipe the S.W. cor. of Sec N^o 82 in Block N^o 4 N. and G. N. Ry. Co.

Thence S. 73° W. 2331 vrs. Thence N. 61° 20' W. 11000 varas to a stake and mound made by Paul M Combs for the S.W. corner of Sec N^o 48 in Block N^o 55 Twp N^o 5 T. and P. Ry. Co's lands. Also a connecting line as follows Beginning at the S.W. corner of Sec N^o 6 in Block N^o 13 N. and G. N. Ry. Co. Thence East 1520 vrs and South 420 vrs to a large rock rd mtd 9 T 10 55. B. 56.

The original N.E. corner of sec N^o 1 Block 56 Twp 10 T. and P. Ry. Co. also the following connecting line. Beginning at an iron pipe the N.W. cor. of sec N^o 29 in Block N^o 13 N. and G. N. Ry. Co. Thence N. 26° W. 4621 vrs Thence N. 35° 20' W. 9180 vrs. Thence N. 38° 50' W. 2028 vrs to a large rock rd marked 7. T 8. 56 B 57 the N.W. corner of sec N^o 6 Block 56 Twp N^o 8 T. and P. Ry. Co.

Variation on first line described above is 11° 15' East, on second var, 11° 05' East and on the last var 11° 10' East

I A.M. Rausch County Surveyor of Reeves County Texas do hereby certify that the above described lines were actually surveyed by me on the ground and that they are correct.

A.M. Rausch
Co Sur Reeves Co Texas

m

N^o 2
Reeves Co.
Sketches

Filed July 23/92.

Wm Braullette
Chief Clerk

AM Randolph's SK. & Con. line
from BIK A, H & G N R Y Co, with
BIK 55, TSP 5 N., T & P. R Y Co.