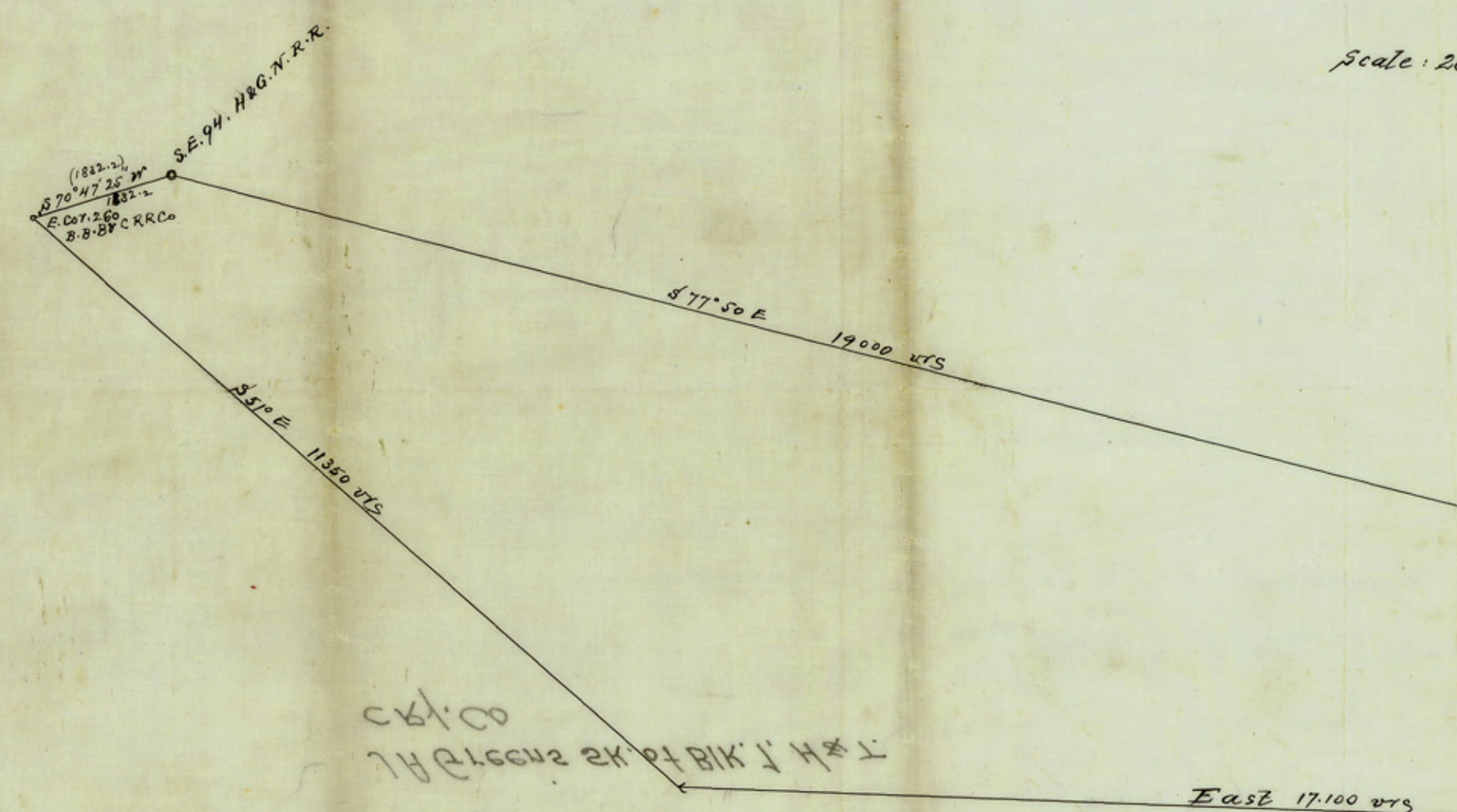




Imperial Tracing Cloth

Copy
of J. R. Greene's St. Sur. sketch
showing H. C. Ry. Co's
Block No 1 on
Toyah Creek
Pecos Co.

Scale: 2000 feet = 1 inch.



T & P. Ry. Blk. 50

Correction to be applied
in notes of No 11-2

Handwritten signature and 'No 9'

274