

Surveyor Office, }
Runnels Co. Texas. } J. H. E. Dickinson
County Surveyor Runnels Co. Texas.

do hereby certify that - I have
carefully run the connection from
the South-west corner of the James
Slide Survey no. - 234. - to Survey
no. 158 - E. T. R. R. Co. - and they are
as follows -

Commenced at - S. W. cor. James Slide
Sur. no. 234. - on the north bank of
the Colorado river. - at R. M. - from
which a meridian bears S. 14 E. - 8. -
a mag. stump brs. - 4. 25 W. - 7. -
then East. 1462 ms. -
then South. 225 ms. - R. M. for S. E. -
Cor. Jas. Slide Sur. no. 234. -
then East. 2500 ms. -
then South. 500 ms. - R. M. made
for S. E. cor. R. M. Williamson Sur. 233. -
then North. 10,500 ms. -
then East. 548 ms. - to a rock
mound at the S. E. corner E. T. R. R.
Sur. no. 158. - This rock mound
at the S. E. cor. 158, has been previously
retrieved by me I having run
connection from corner west bearing
line in the E. T. R. R. back to
the said R. M. the S. E. cor. 158. -

This connection was run on the
ground by me, on August - 1 - 1889. -

This the 24th day of Oct. - 1889. -

H. E. Dickinson County Surveyor
of Runnels Co. Texas

Surveyor of the
Runnels Co. Tex. } - I H. E. Dickinson
County Surveyor Runnels Co. Texas -
do hereby certify that on October
29th 1889 with C. C. F. Mauland
and Percy Mauland as chain.

Surveyor I personally run the
Countryside from the N. E. cor.
Sur. No. 103. - (a R. M. created
by me from an old R. M. the
S. E. cor. saw Sur. 103. -)
to the S. W. cor. Sur. No. 234
in name of James Stride -
and the distance an a bearing -
East - 1585 ms. -
South - 1400 ms. -

to S. W. cor. Stride a R. M. -
ms. S. 14 E. 8. -

Plump " N. 25 W. 7. -

This Oct - 29 - 1889. -

H. E. Dickinson

County Surveyor
of Runnels Co. Tex.

File 22

Runnels County

Connecting lines filed
in the General Land Office.

Decemb. 4/89

A. W. Shelley

Chief Clerk.

counter 35487

[Faint, mostly illegible handwritten notes on the right page, possibly including the date 12/4/89.]

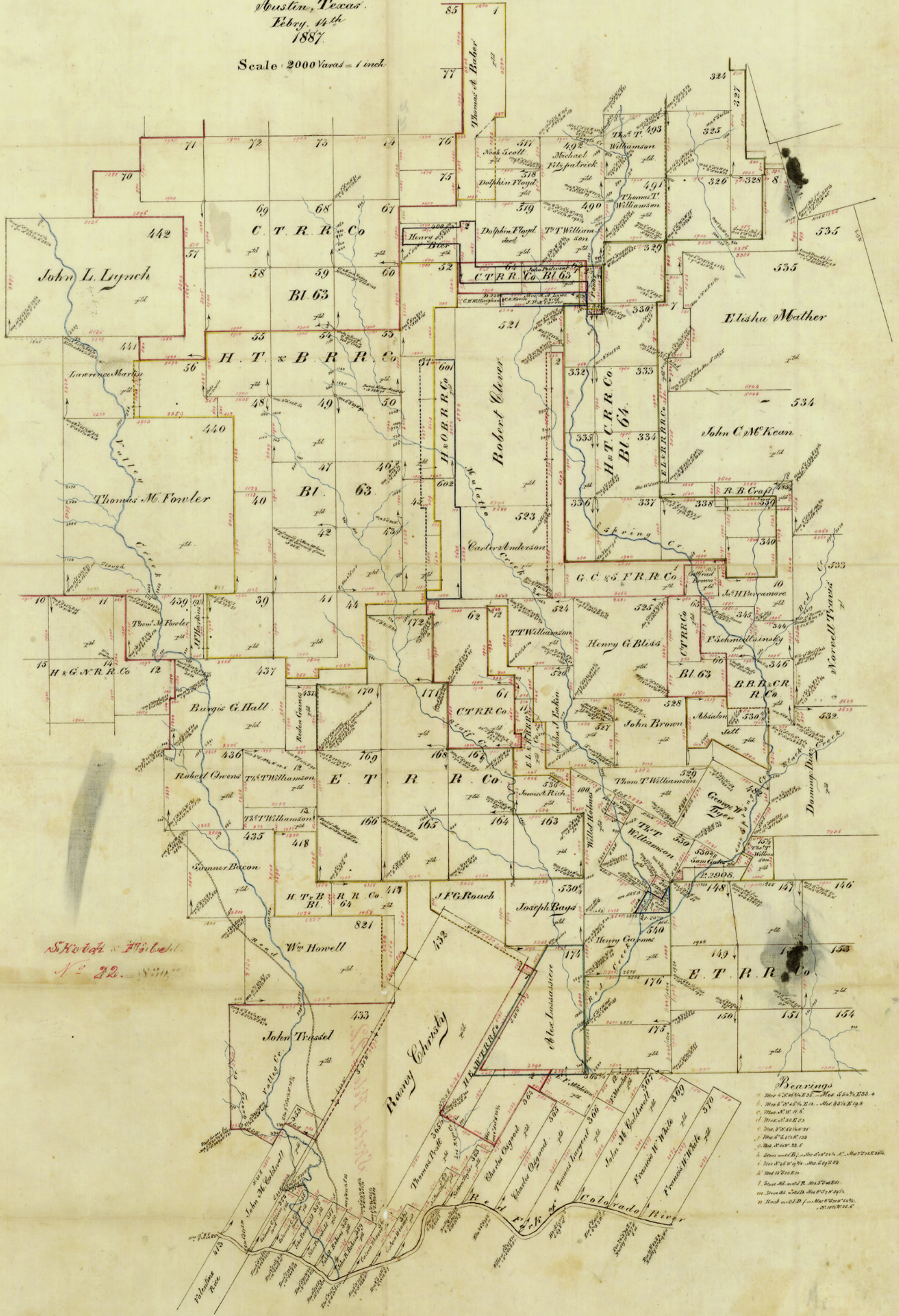
E12

Working Sketch

Runnels Co.

General Land Office
Austin, Texas.
Feby. 14th
1887.

Scale: 2000 Yards = 1 inch



Sketch & Filed
No. 22

- Bearings
- 1. S. 88° 15' E. 1/2 Sec. 25 - Mar. 5, 1853
 - 2. S. 75° 15' E. 1/2 Sec. 25 - Mar. 5, 1853
 - 3. S. 88° 15' E. 1/2 Sec. 25
 - 4. S. 88° 15' E. 1/2 Sec. 25
 - 5. S. 88° 15' E. 1/2 Sec. 25
 - 6. S. 88° 15' E. 1/2 Sec. 25
 - 7. S. 88° 15' E. 1/2 Sec. 25
 - 8. S. 88° 15' E. 1/2 Sec. 25
 - 9. S. 88° 15' E. 1/2 Sec. 25
 - 10. S. 88° 15' E. 1/2 Sec. 25

19. - 22.

Rummels Co

Working SK. by RS Bowen, from
Thos. A. Baber #1 on the North,
to Colorado R. on the South.

Dated Feb. 14, 1887.

counter 35484