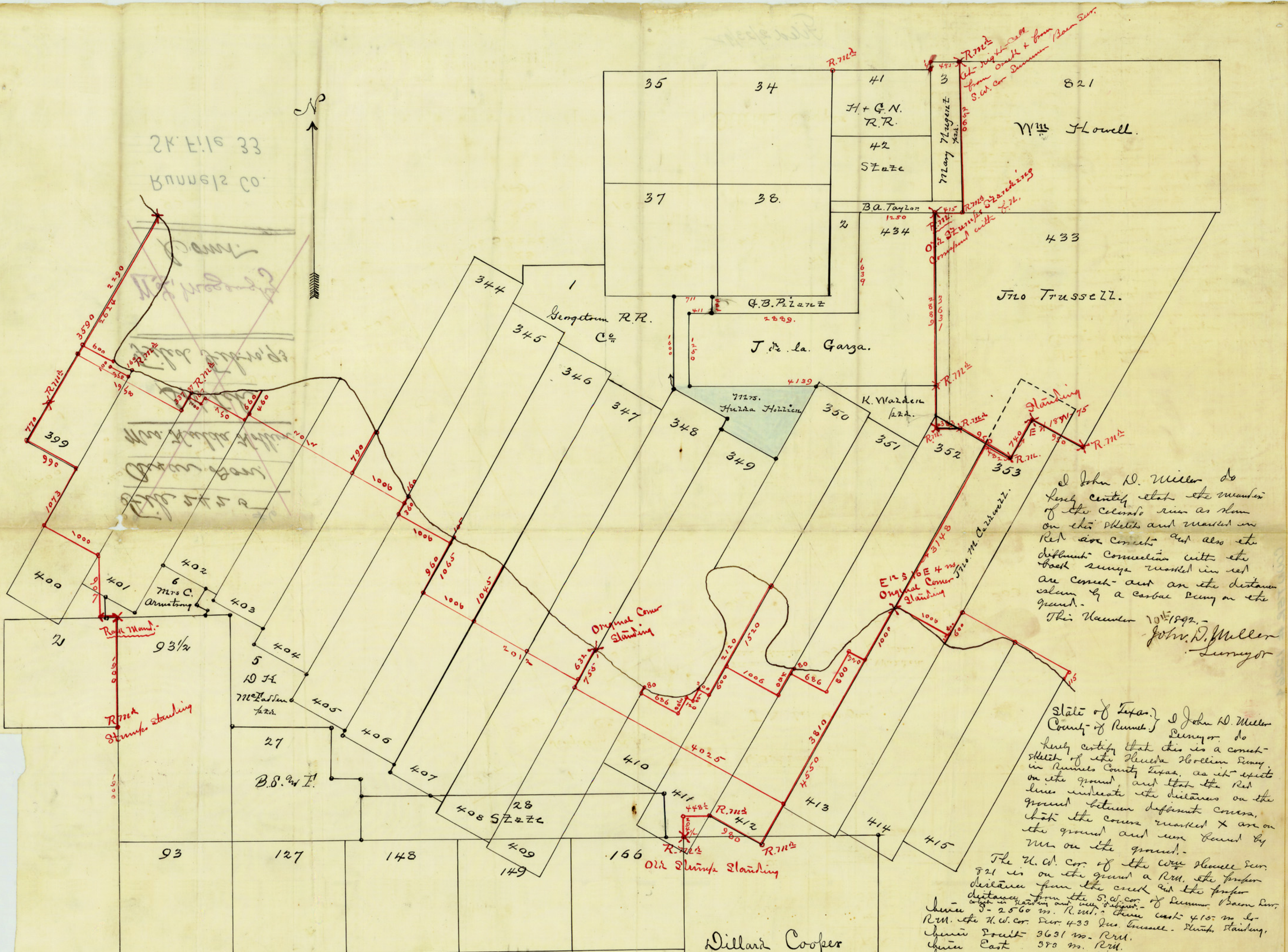
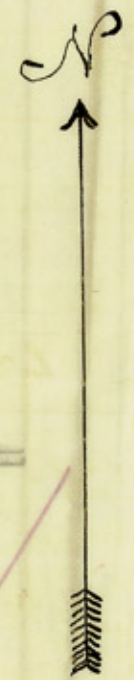


2K E 16 33  
 Bruner & Co.



I John D. Miller do  
 hereby certify that the measure  
 of the corners run as shown  
 on this sketch and marked in  
 Red are correct and also the  
 different connections with the  
 back survey marked in red  
 are correct and are the distance  
 shown by a casual run on the  
 ground.  
 This November 10<sup>th</sup> 1892.  
 John D. Miller  
 Surveyor

State of Texas, I John D. Miller  
 County of Runnels Surveyor do  
 hereby certify that this is a correct  
 sketch of the Florida Holman Survey  
 in Runnels County Texas, as it exists  
 on the ground, and that the Red  
 lines indicate the distances on the  
 ground between different corners,  
 that the corners marked with an 'X'  
 on the ground and run found by  
 me on the ground.

The U. S. Cor. of the Wm. Lowell Sur.  
 821 is on the ground a R.M. the proper  
 distance from the creek and the proper  
 distance from the S.W. cor. of Sumner & Bacon Sur.  
 is 2560 m. R.M. there east 415 m. to  
 Run. the U. S. cor. Sur. 433 Sur. Lowell. stump standing.  
 Run. Point 3631 m. R.M.  
 Run. East 390 m. R.M.  
 Run. 3.602. 900 " R.M.  
 Run. 4.302 740 " R.M. Elm bearing well  
 marked No. 7.18 N 75.  
 This corner is N. 30 E 3148 m -  
 S. 60 E 482 m - North 30 E 740 m. from the  
 S.W. corner of Sur. 303 and the U.S. cor. Sur. 413  
 a well marked corner  
 This November 10<sup>th</sup> 1892. John D. Miller  
 Surveyor

Scale 1000 m per inch.  
 Variation 9° 30' East.

Dillard Cooper