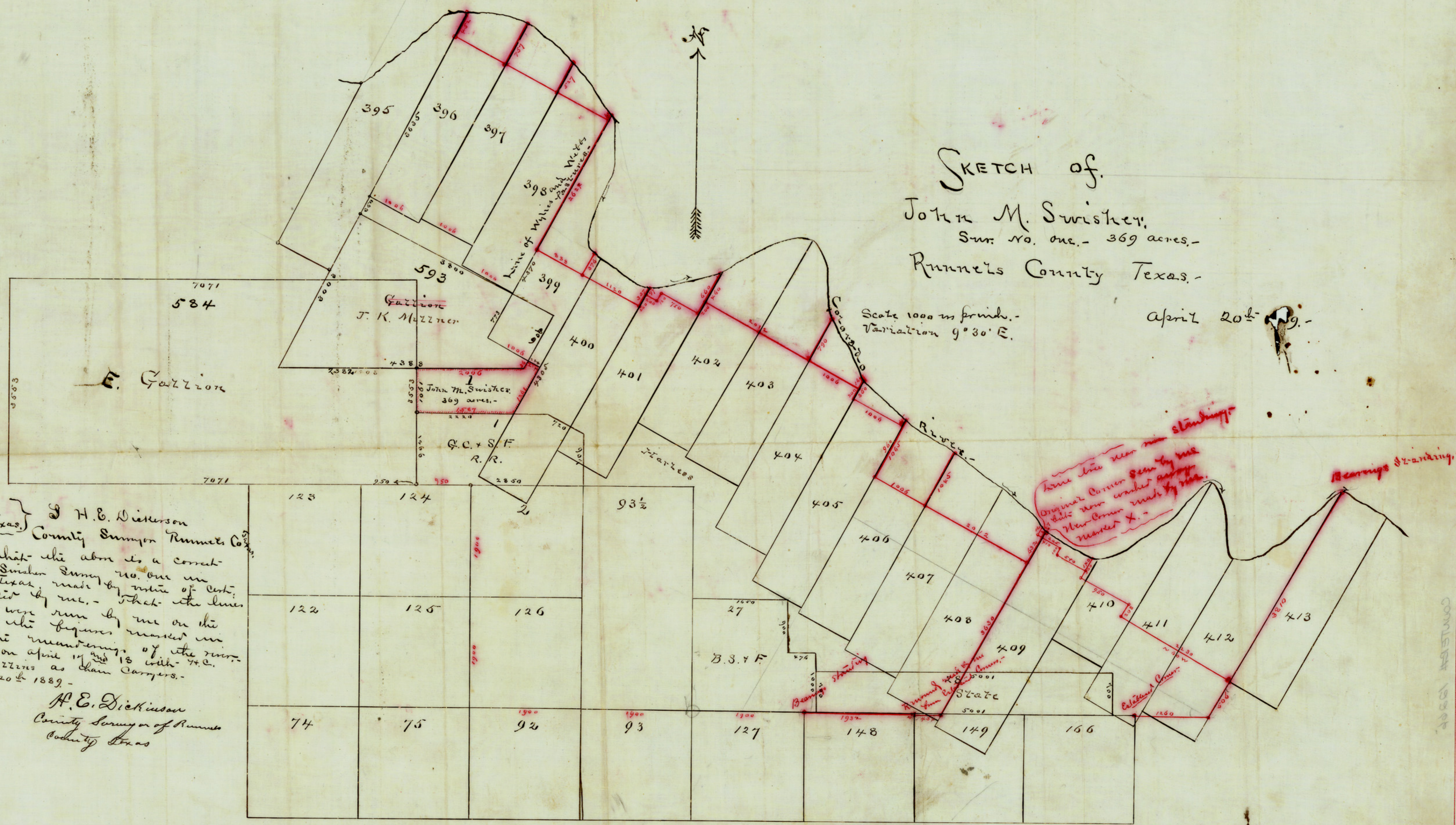


John M. Swisher
John M. Swisher
John M. Swisher
John M. Swisher
John M. Swisher

SKETCH of
 John M. Swisher,
 Sur. No. one - 369 acres -
 Runnels County Texas.

April 20th 1889.

Scale 1000 m. front. -
 Variation 9°30' E.



Surveyors Office
 Runnels County Texas,
 I H. E. Dickison
 County Surveyor Runnels Co.
 Do hereby certify that the above is a correct
 sketch of John M. Swisher Survey No. one in
 Runnels County Texas, made by virtue of Cert.
 No. 204 - as located by me. - That the lines
 marked in Red were run by me on the
 ground and with the figures marked in
 Red represent the meanderings of the river,
 as made by me on April 17th and 18th with
 Royalty and E. B. Collins as chain carriers.
 This April 20th 1889 -
 H. E. Dickison
 County Surveyor of Runnels
 County Texas