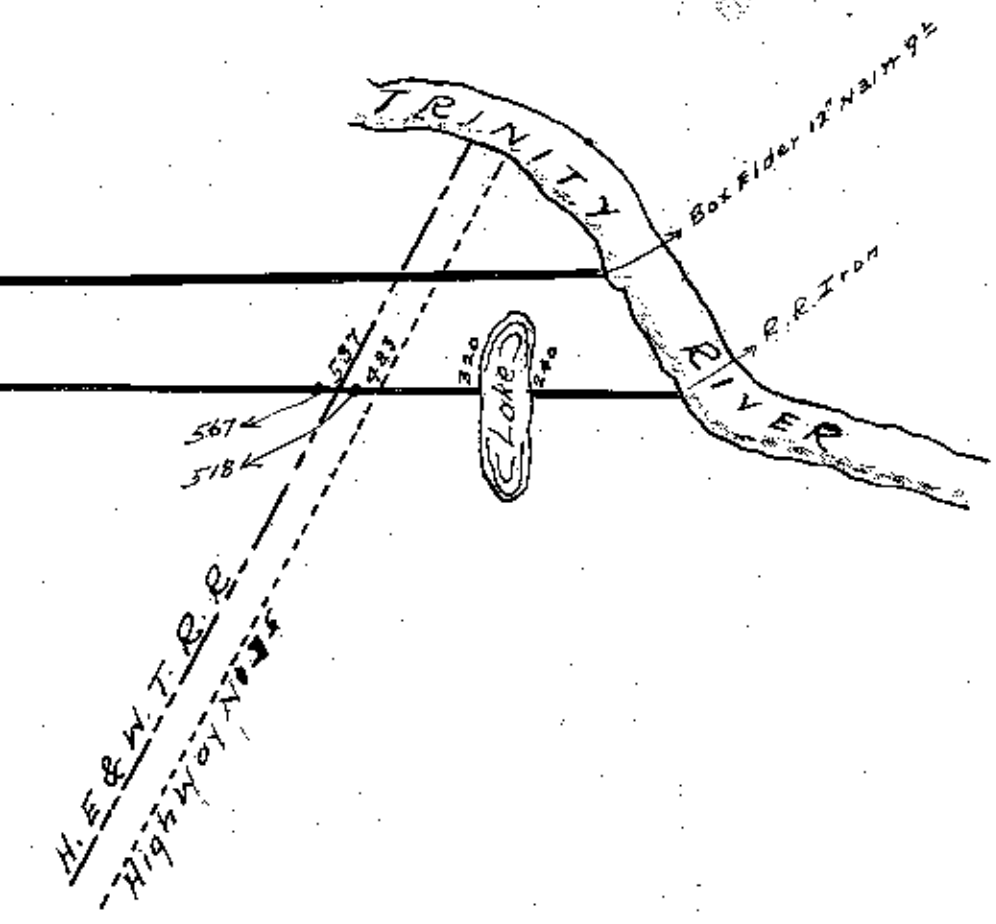


RECEIVED
AUG 11 1939

J. D. Martinez No 10.



S.S. Lanier

Jesse B. Irvine

J. T. Simpson League

PLAT OF
Jessie B. Irvine Survey,
San Jacinto County Texas.

Prepared from field notes of a Survey
made by me on July 27th - 29th 1939.

Gordon Ross.
County Surveyor
San Jacinto County, Texas.

J. A. Schnell

Annie J. Smith

Scale 2000 ft. = 1 inch